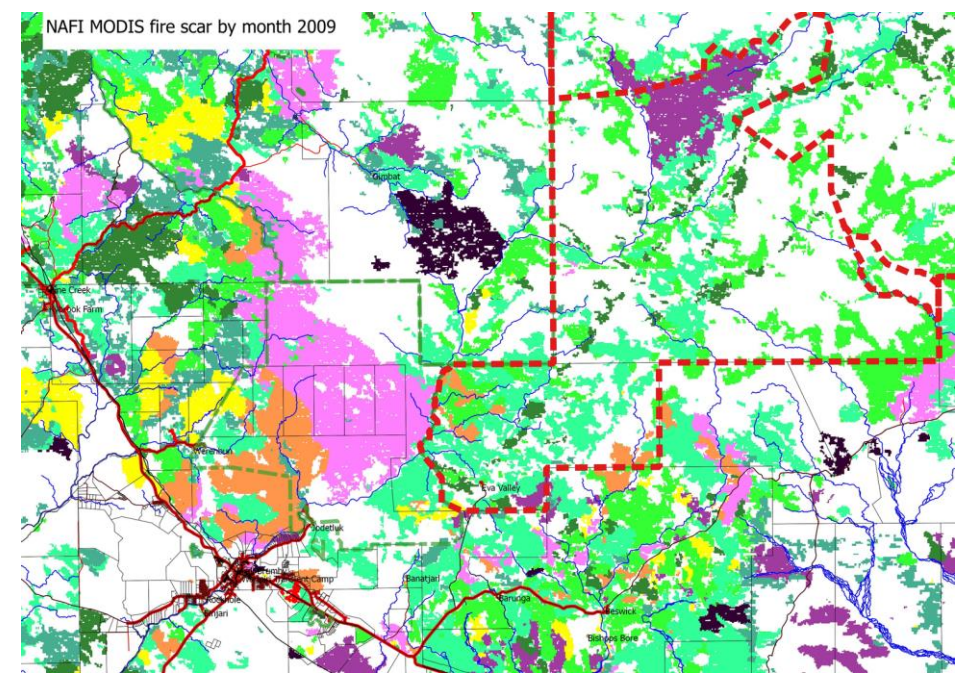
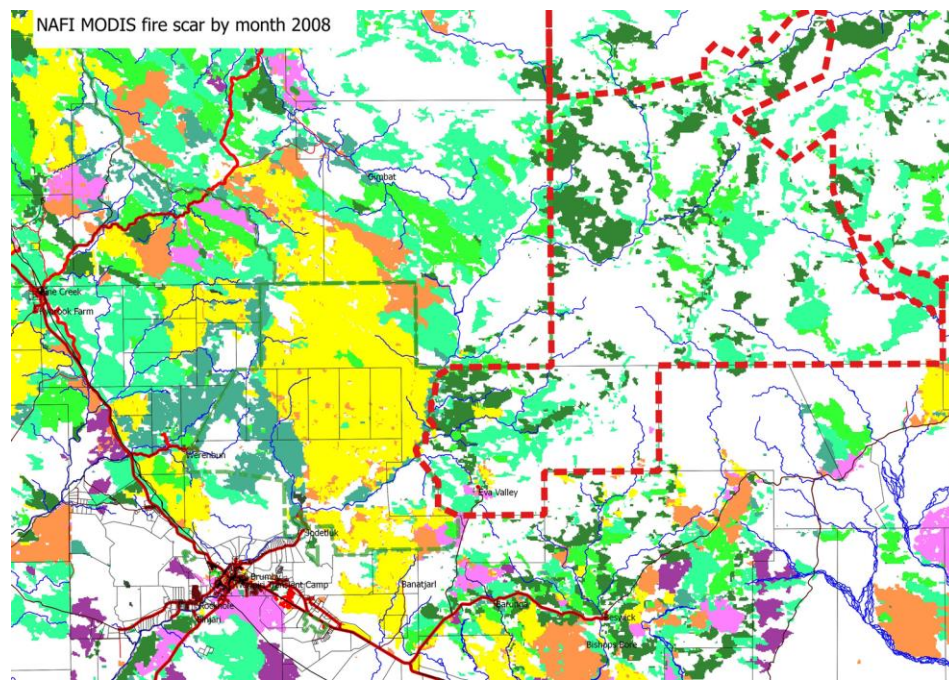
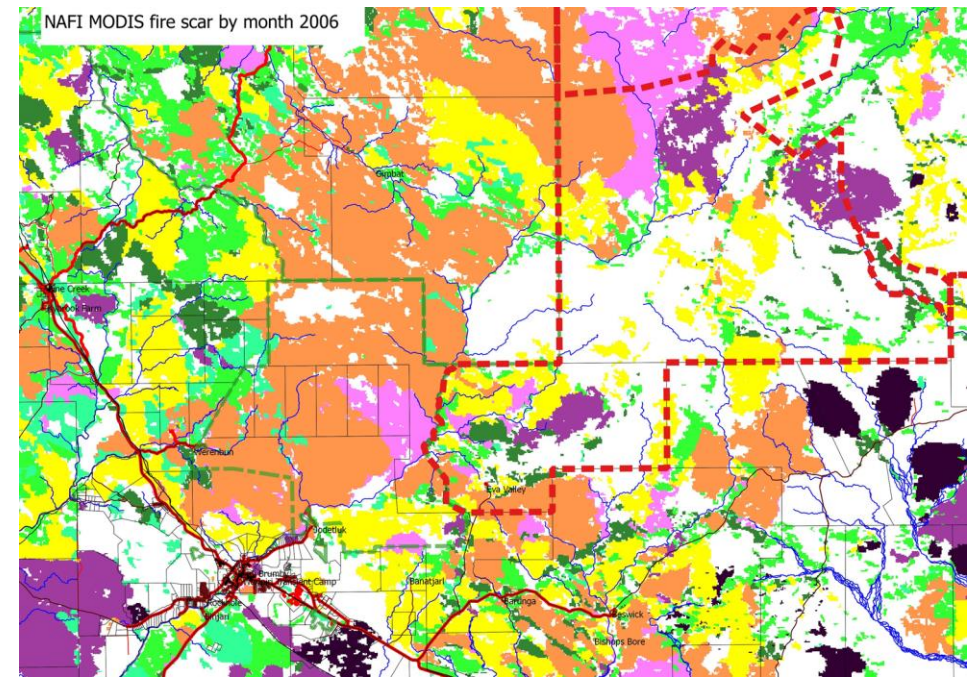
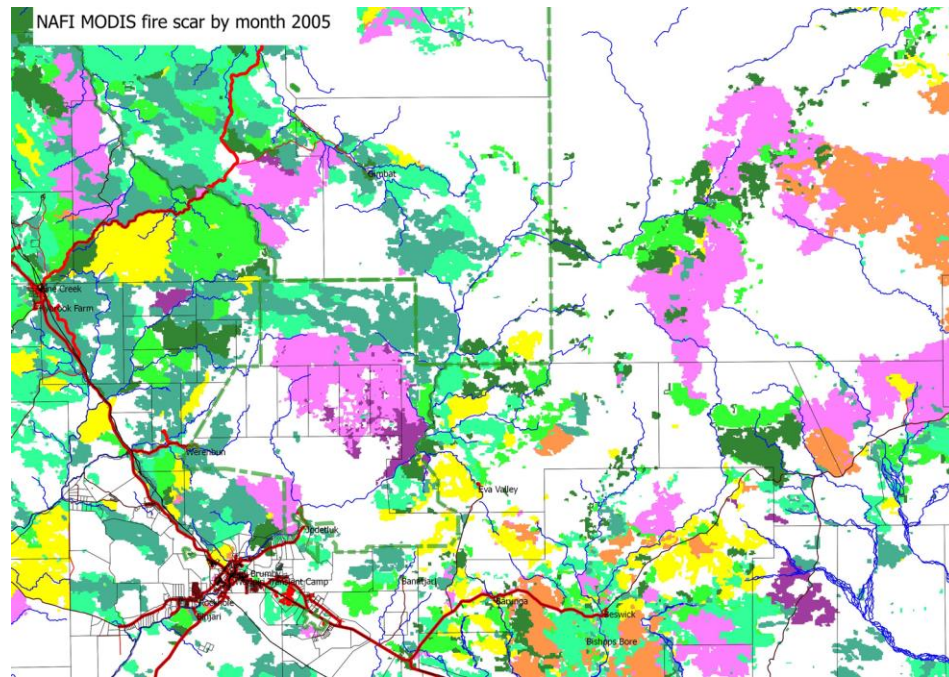
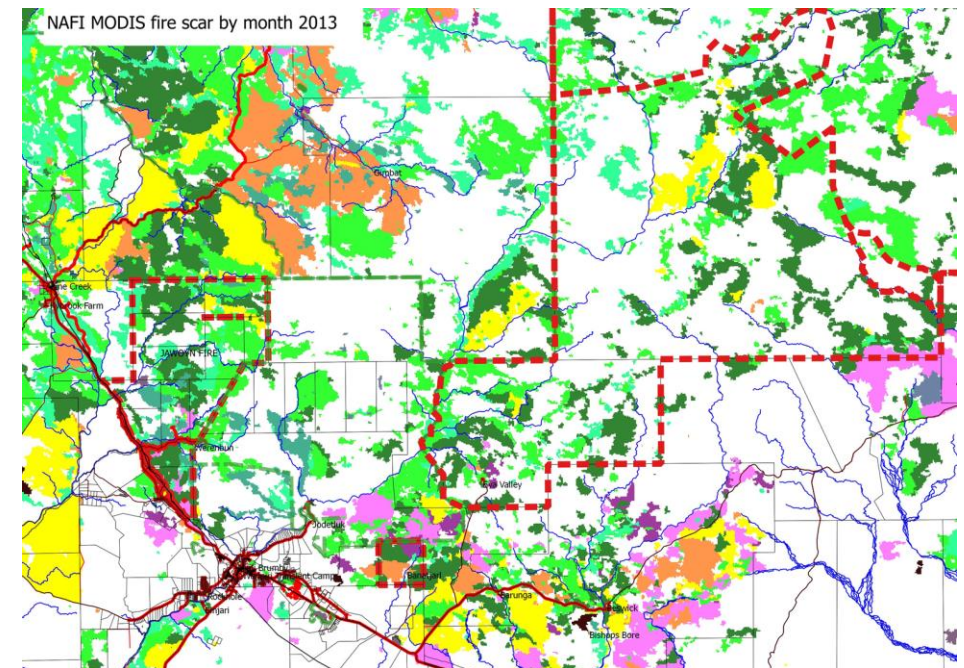
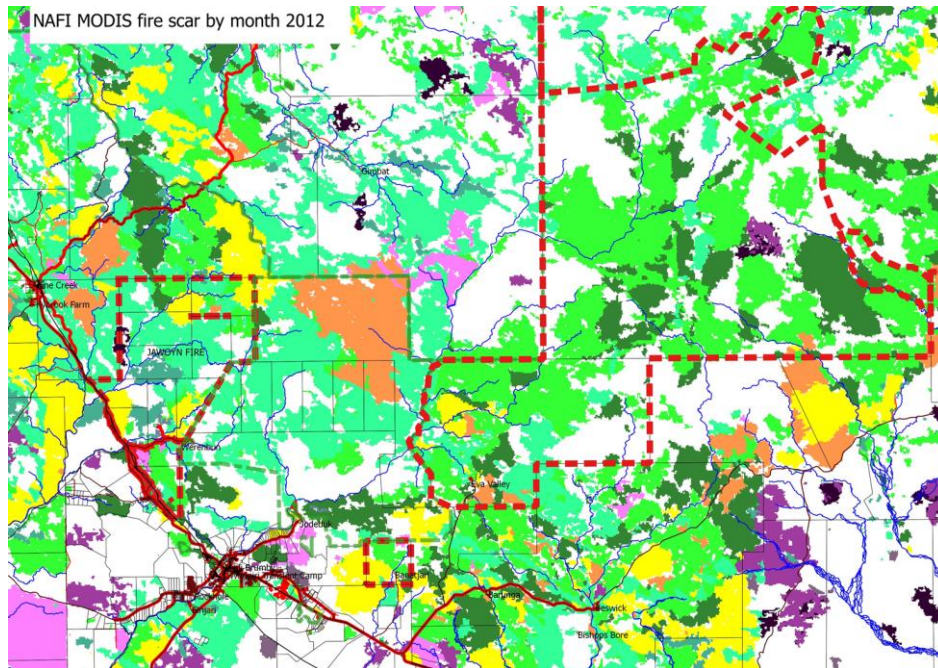
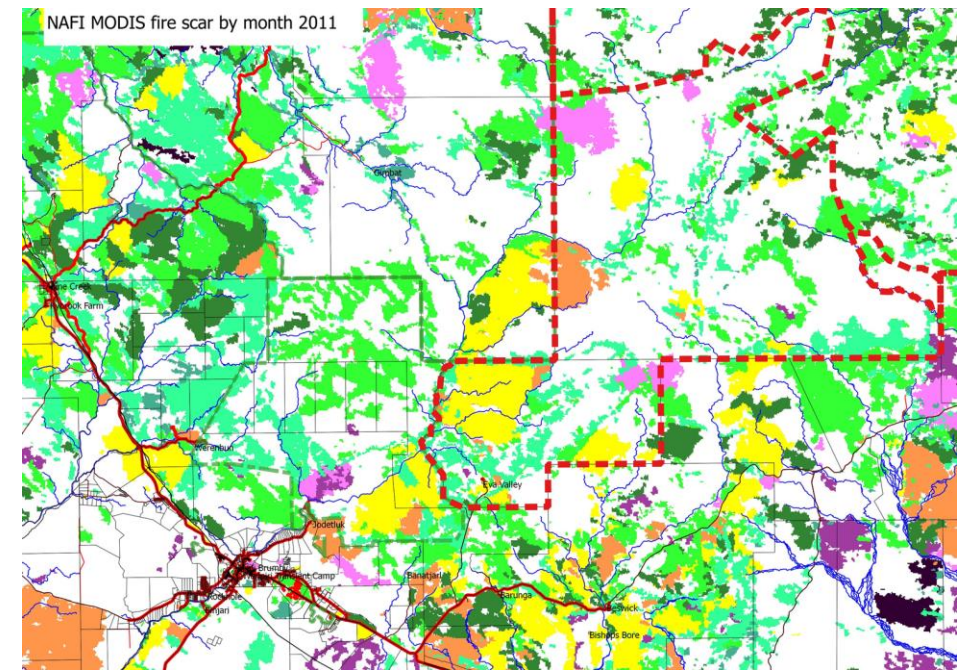
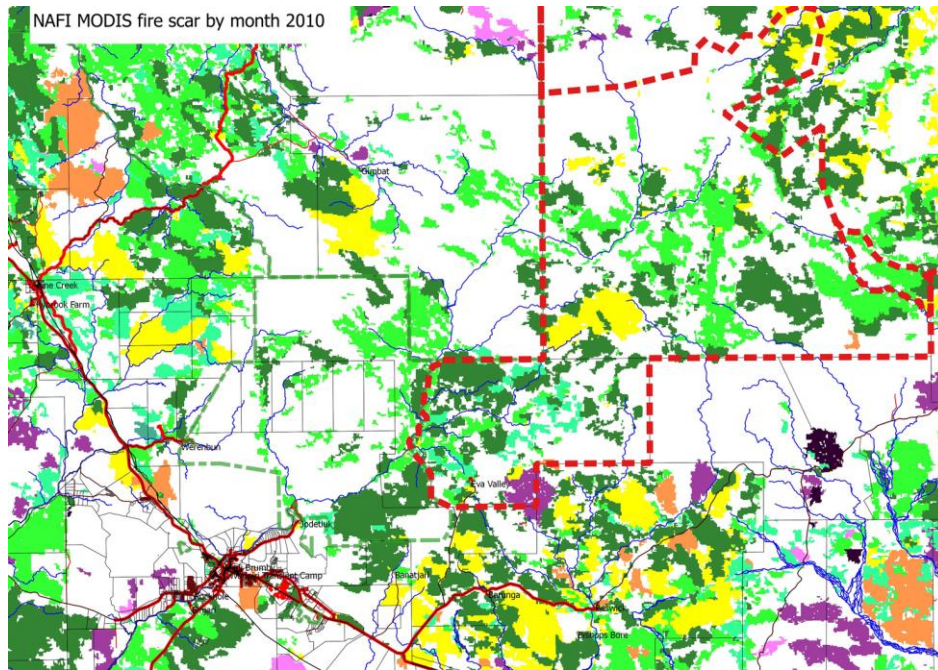


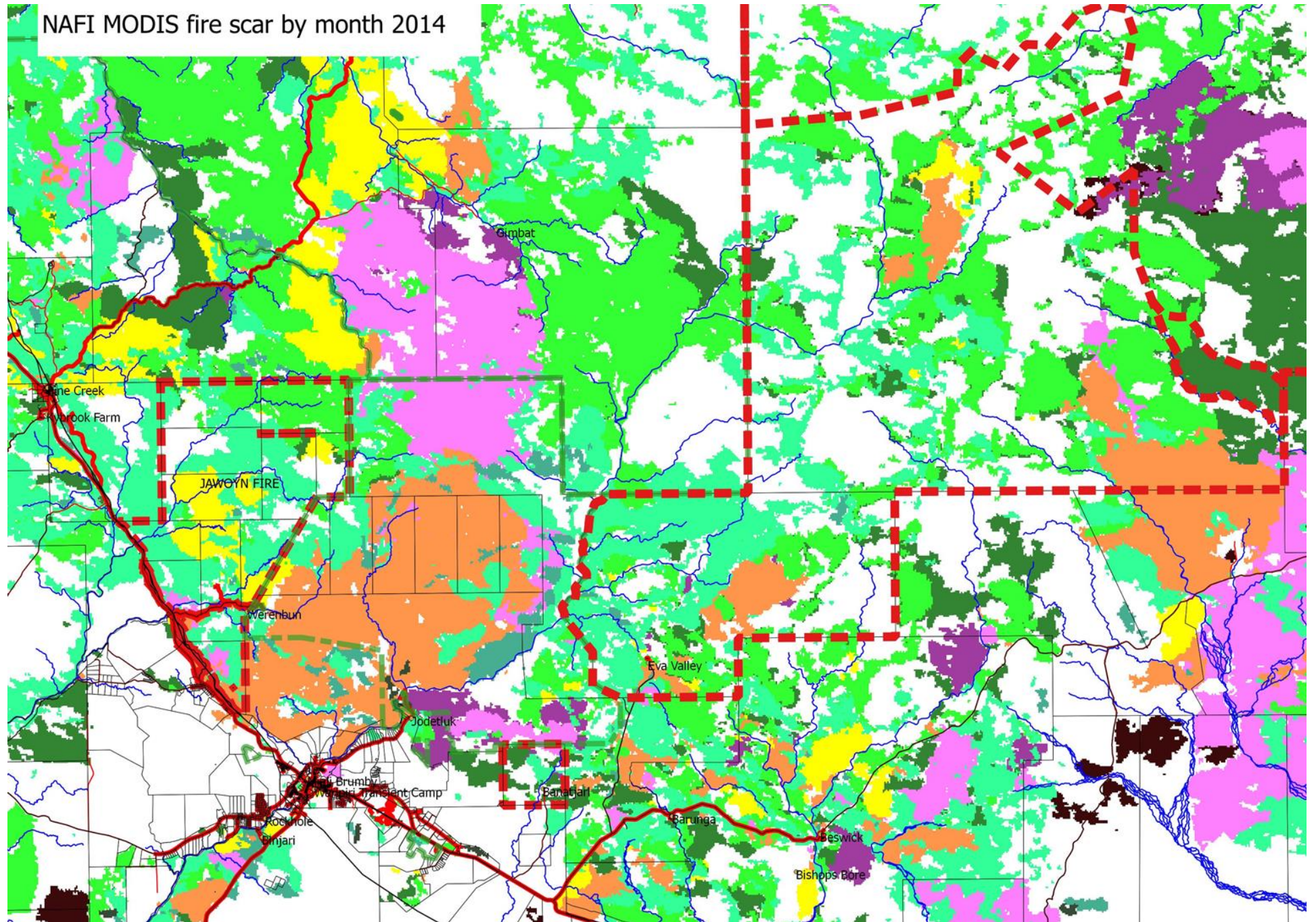
2005 to 2010
Nitmiluk
National Park
was affected by
large late dry
season wildfires
in 3 out of 5 years.



In planning for fire management from 2010 onwards, the park Rangers working with fire scientists & botanists took a new approach.

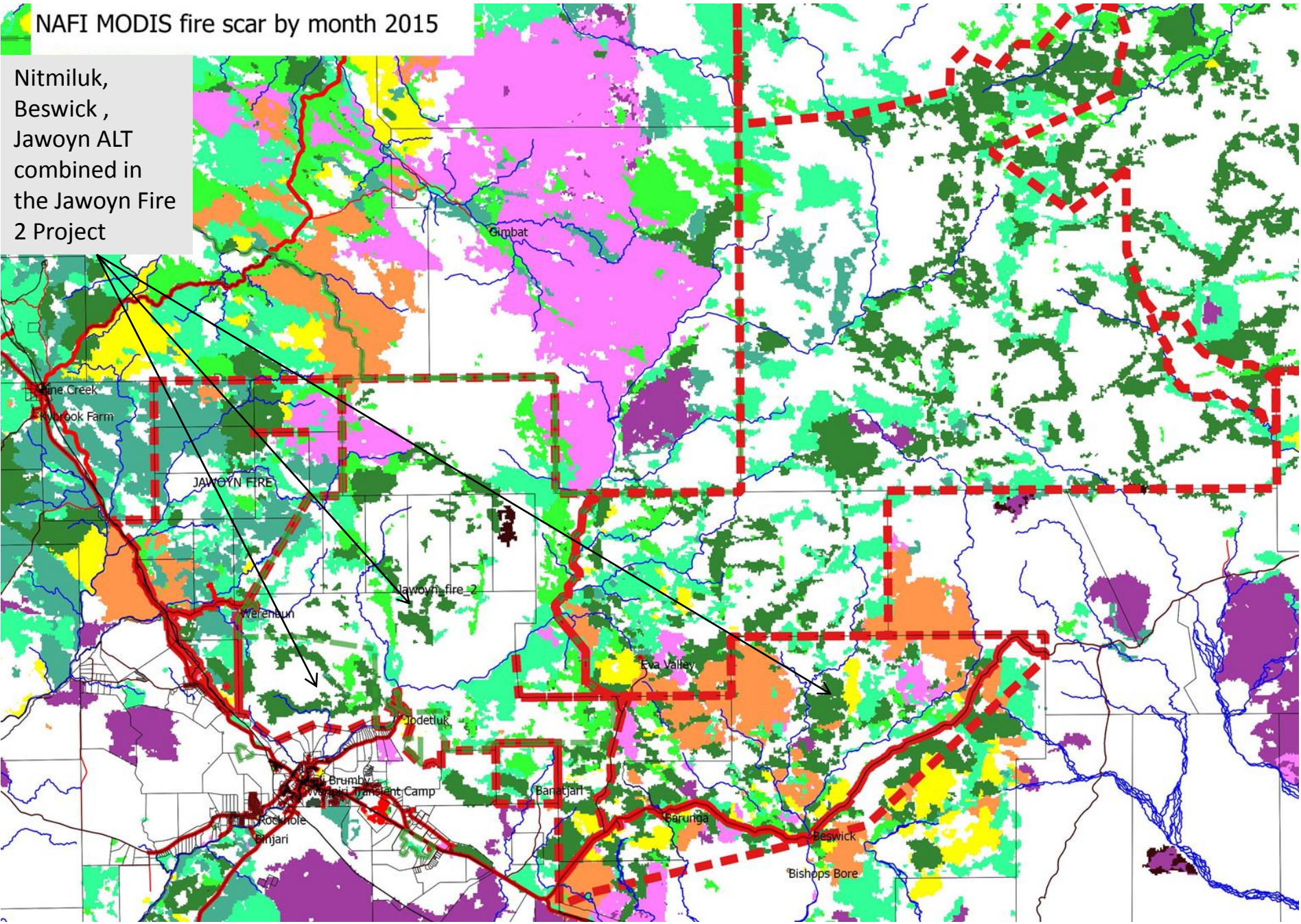


This generally worked well until 2014, where the park suffered a big late dry season fire from north to south.



NAFI MODIS fire scar by month 2015

Nitmiluk,
Beswick,
Jawoyn ALT
combined in
the Jawoyn Fire
2 Project



In 2015 the Jawoyn Association wrote to the NTG and Nitmiluk National park Board of Management tabling their intent to enter into joint carbon farming agreement at Nitmiluk to complement the work that they had been doing outside the park.

Late in 2015
Jawoyn Rangers
assisted us in
controlling a
late dry season
fire

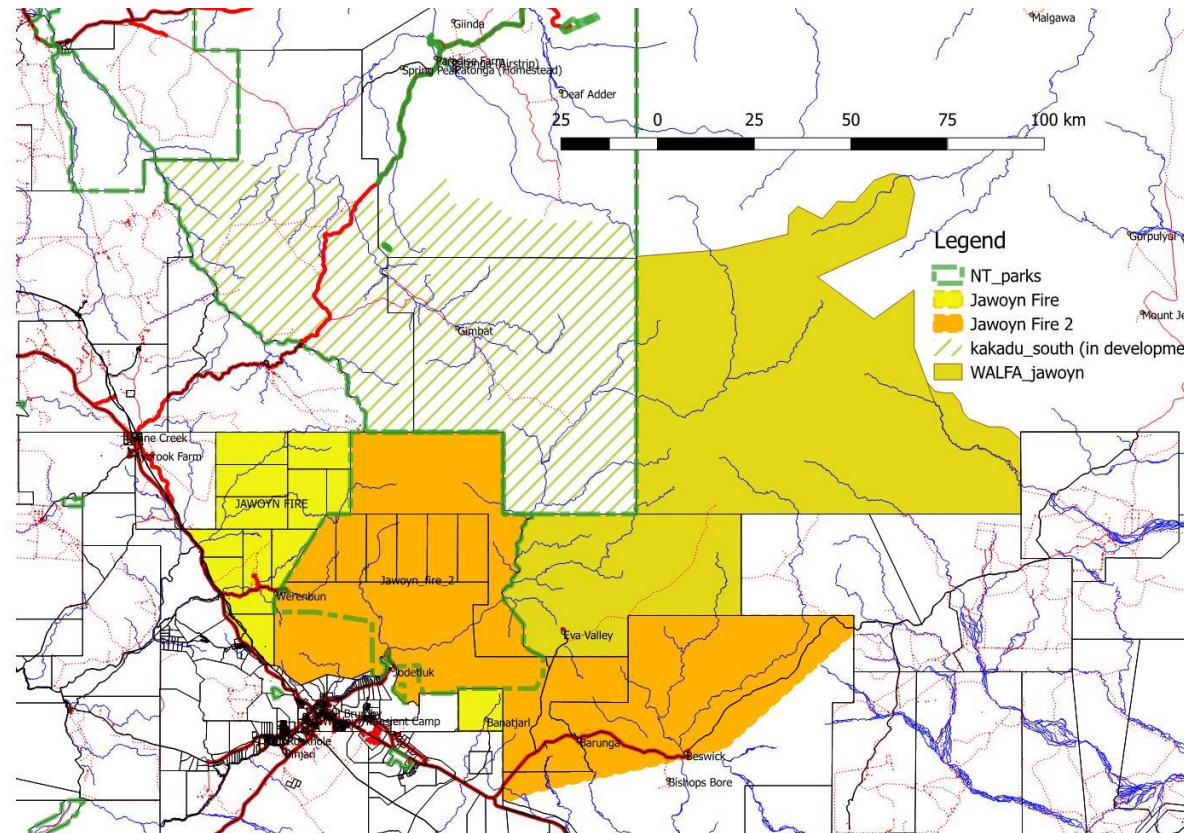


2016 the carbon farming was legally formalized where the Jawoyn Association were issued a permit to carry out Carbon Farming to earn credits under the ERF

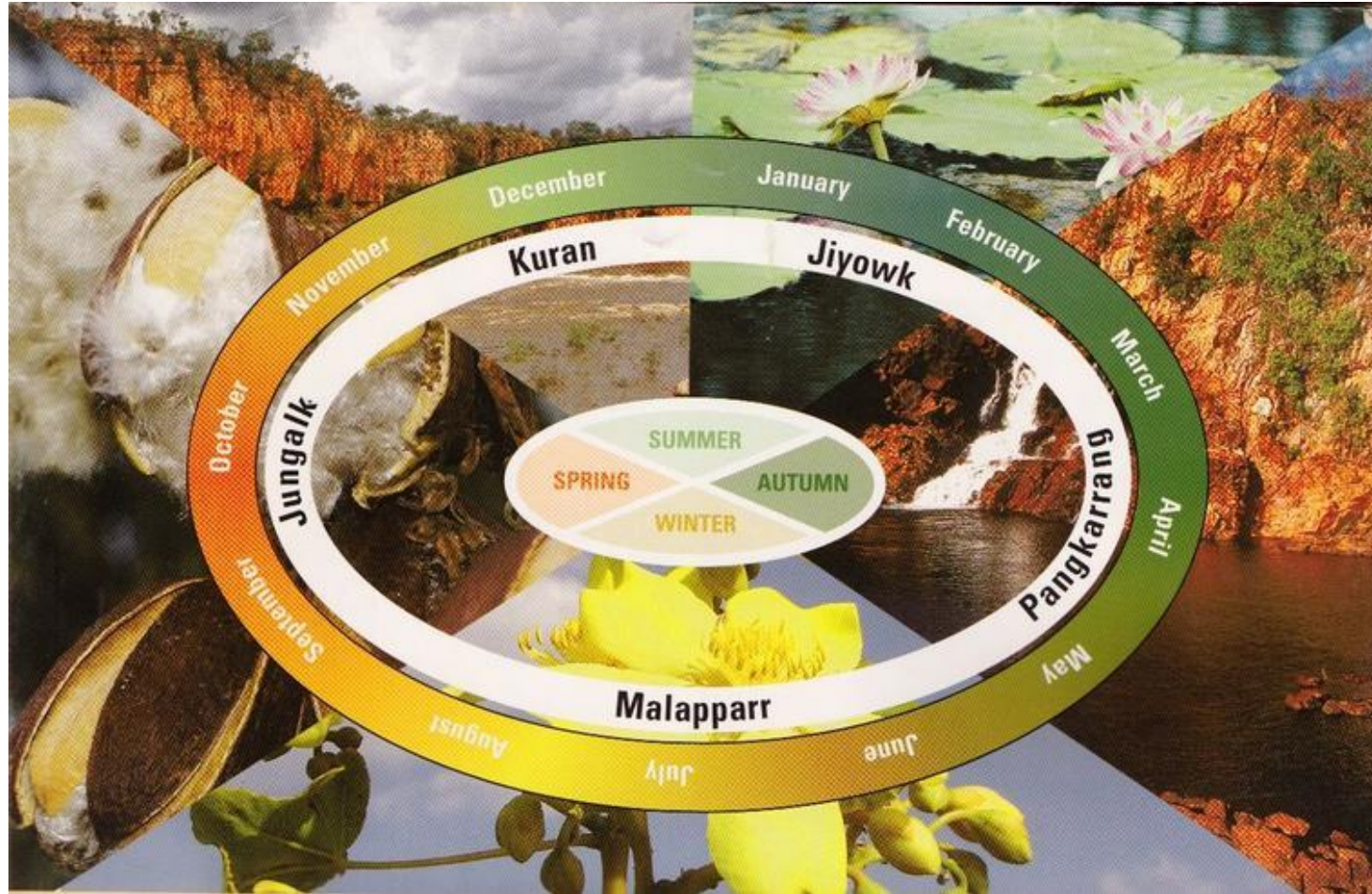


Jawoyn Fire Projects 2006-2017

Participatory Planning Processes



3.Planning cycle

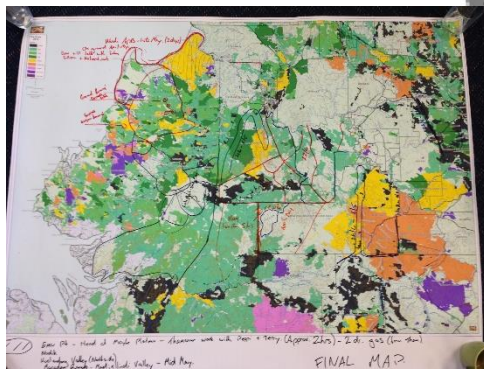


The Fire Planning Cycle

Mid season review (June)



Planning Meeting
(April)



Evaluation Meeting
(November)

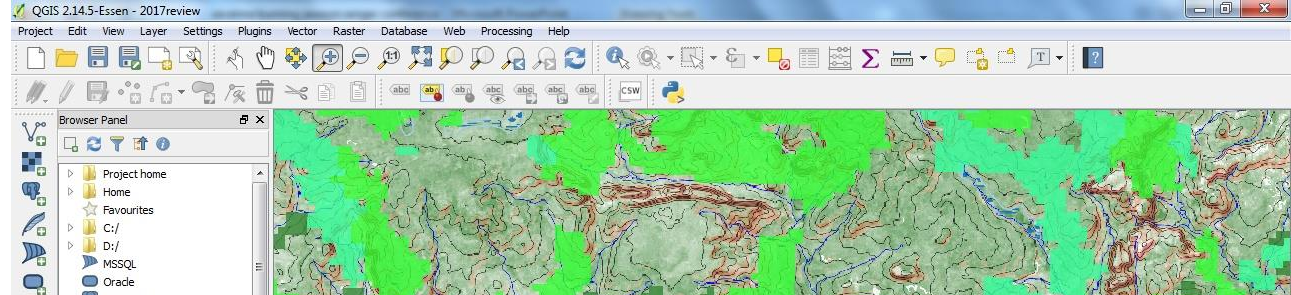
Planning scales

- Community consultations
- 8 communities and key individuals engaged
- External Stakeholders
- Nitmiluk and Kakadu National Parks,
- Regional Bushfires NT meeting
- ALFA Arnhem region meeting

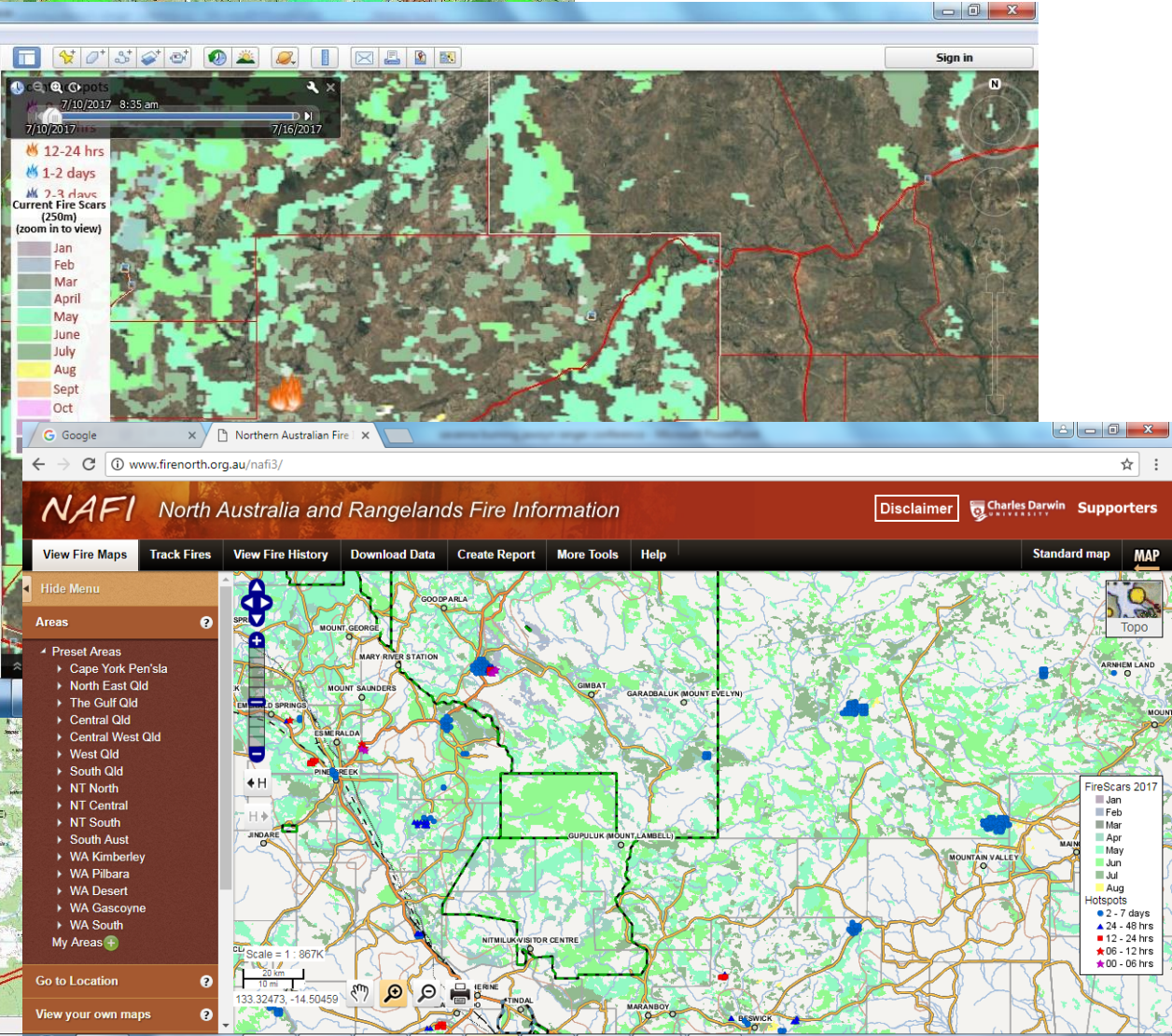
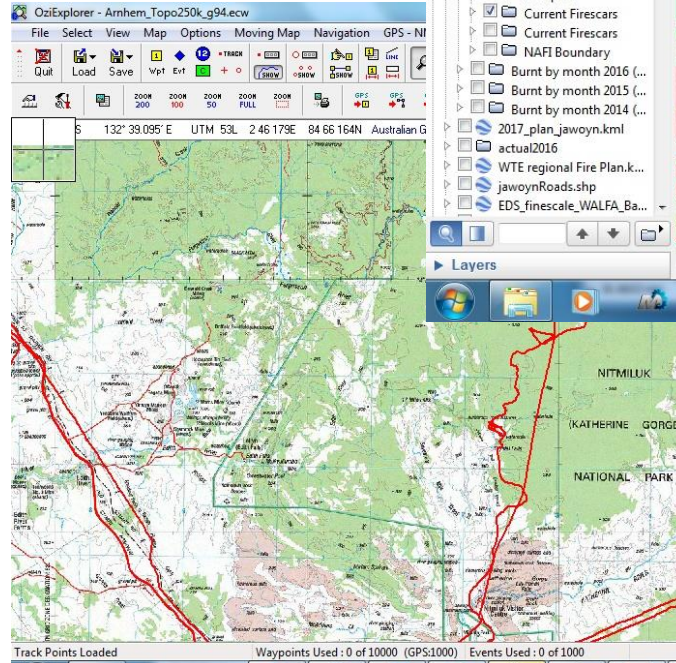
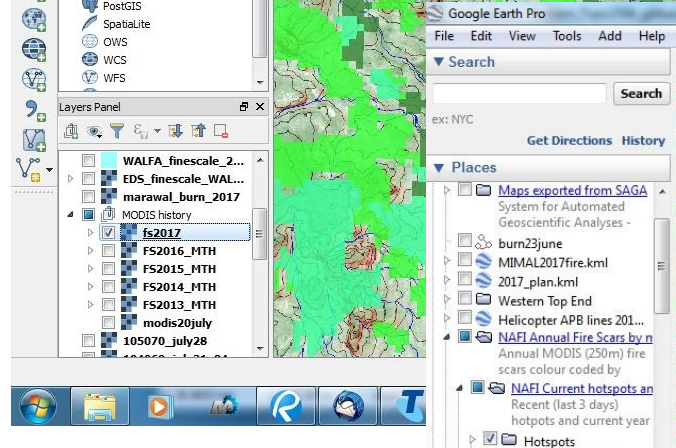


NAFI service
Satellite imagery and mapping
participatory tools (projector, 3D
model, paper maps)

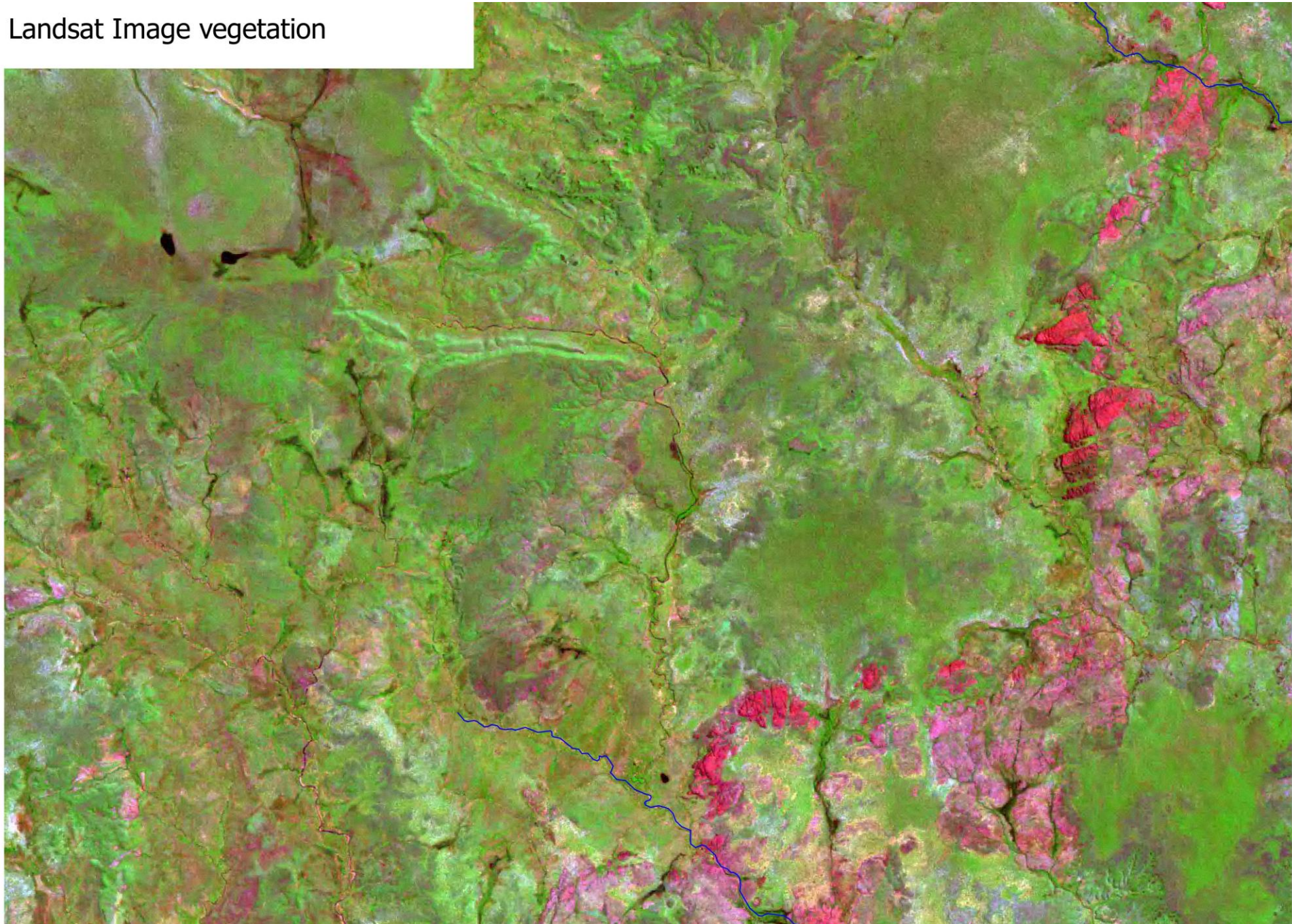




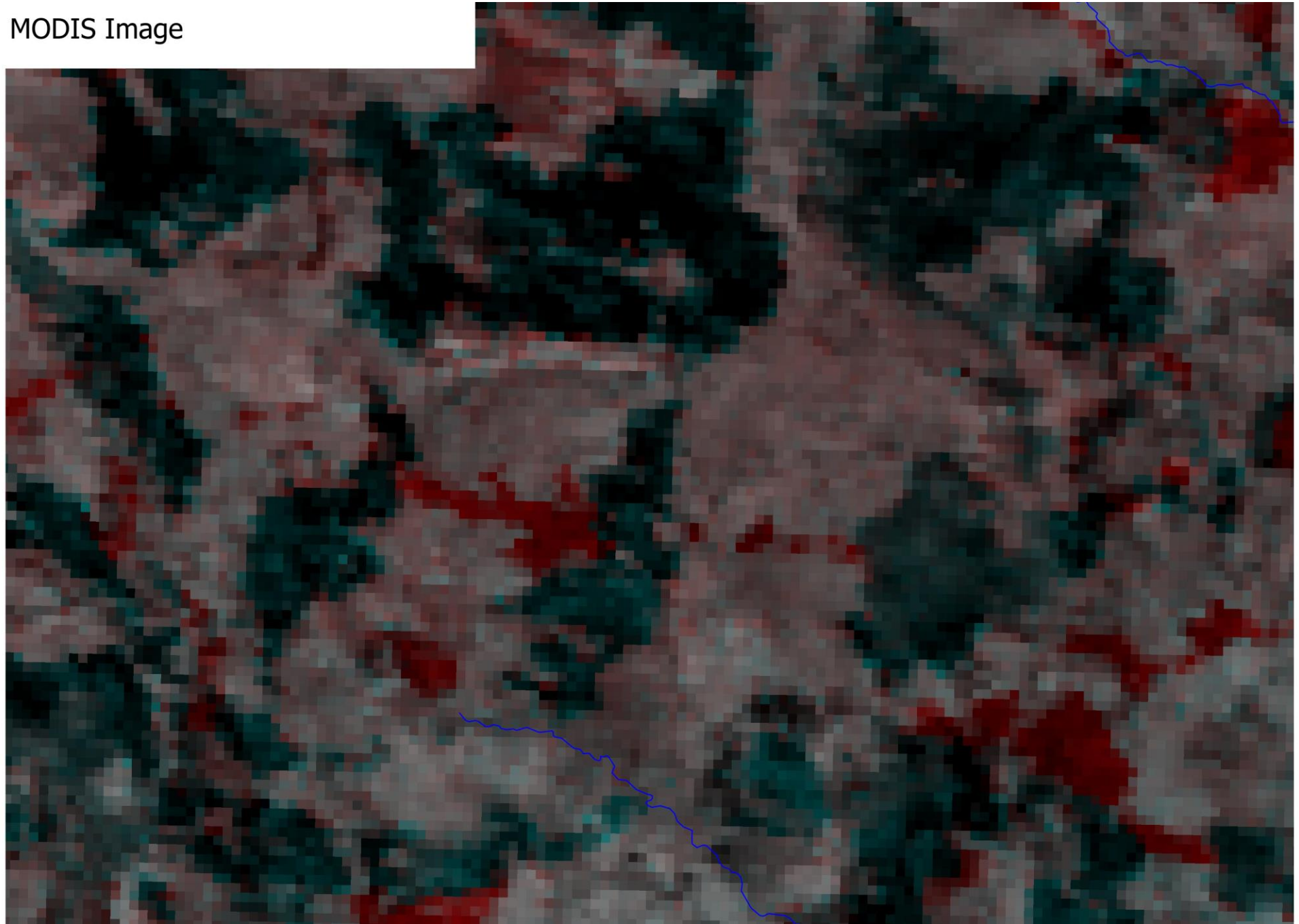
Our GIS platforms
oziexplorer
Google earth
NAFI online
cultural Database
Qgis



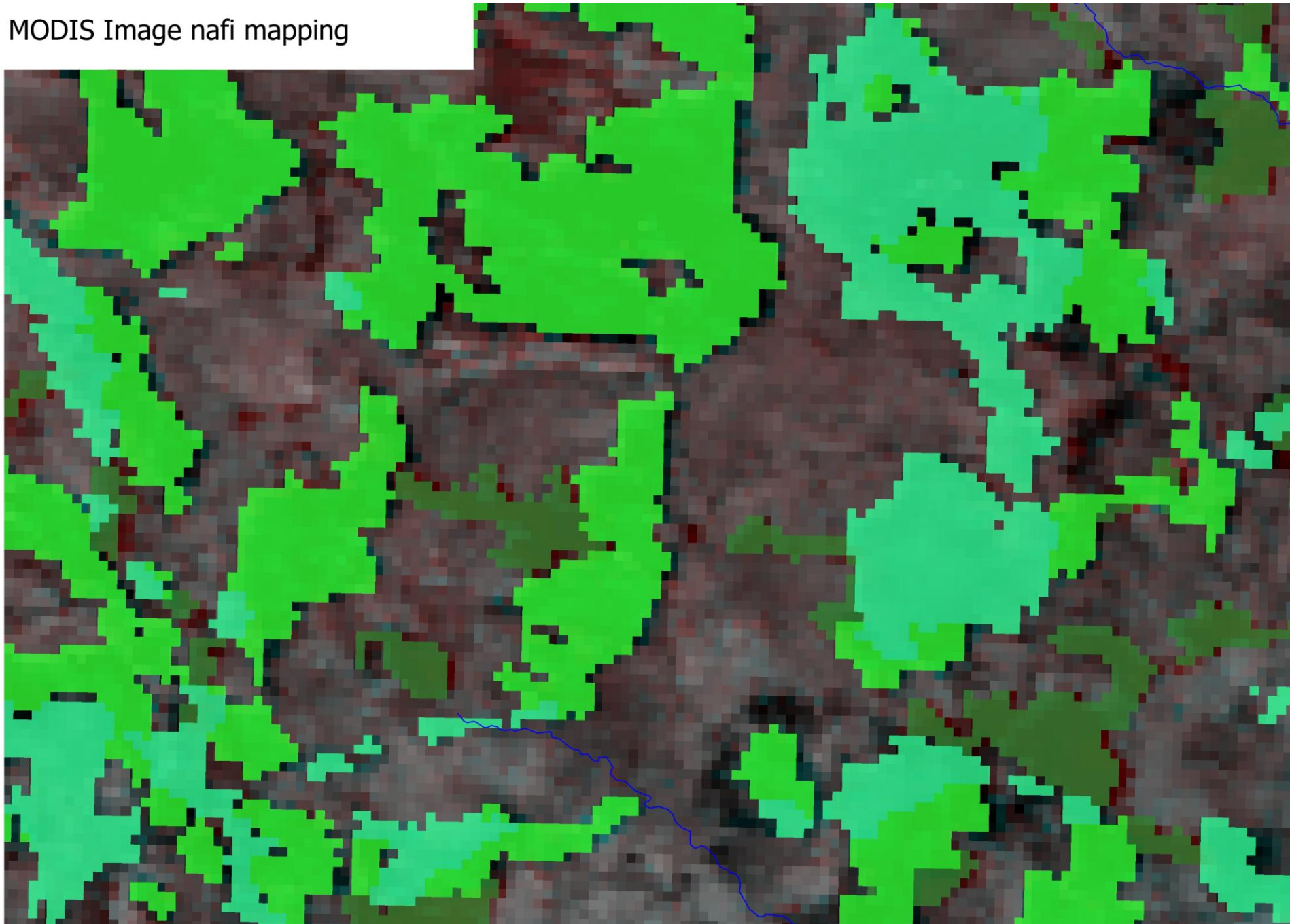
Landsat Image vegetation



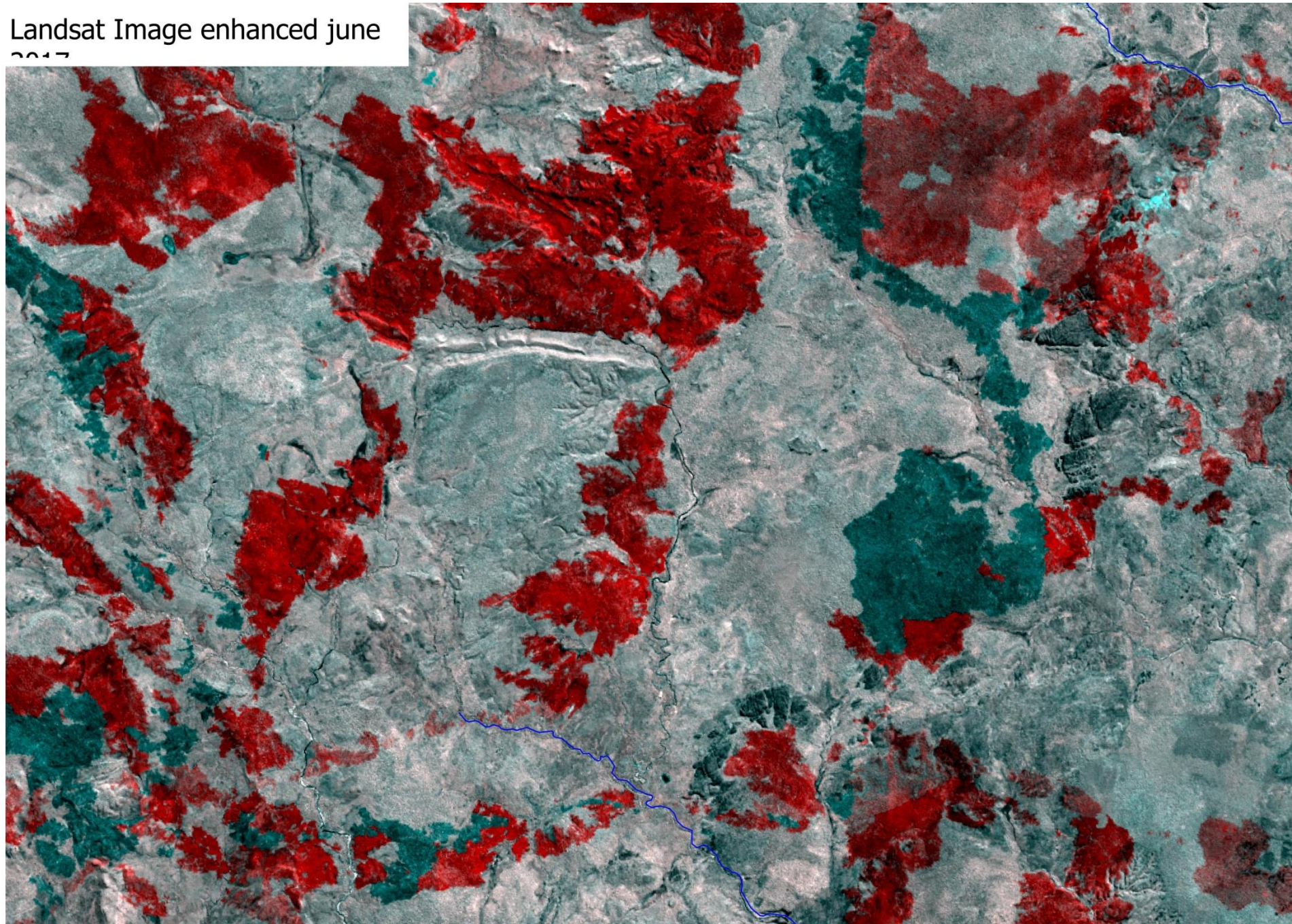
MODIS Image



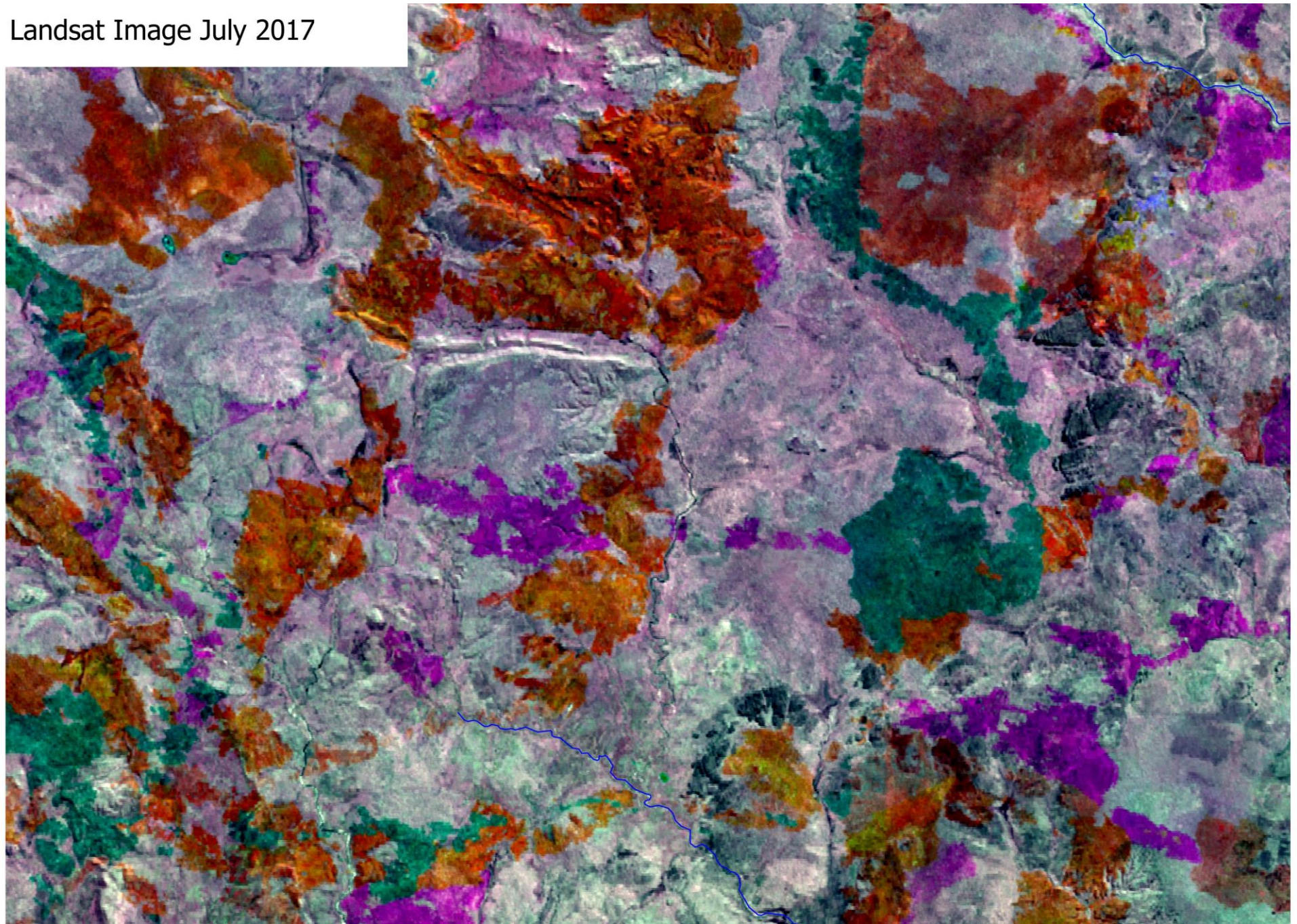
MODIS Image nafi mapping



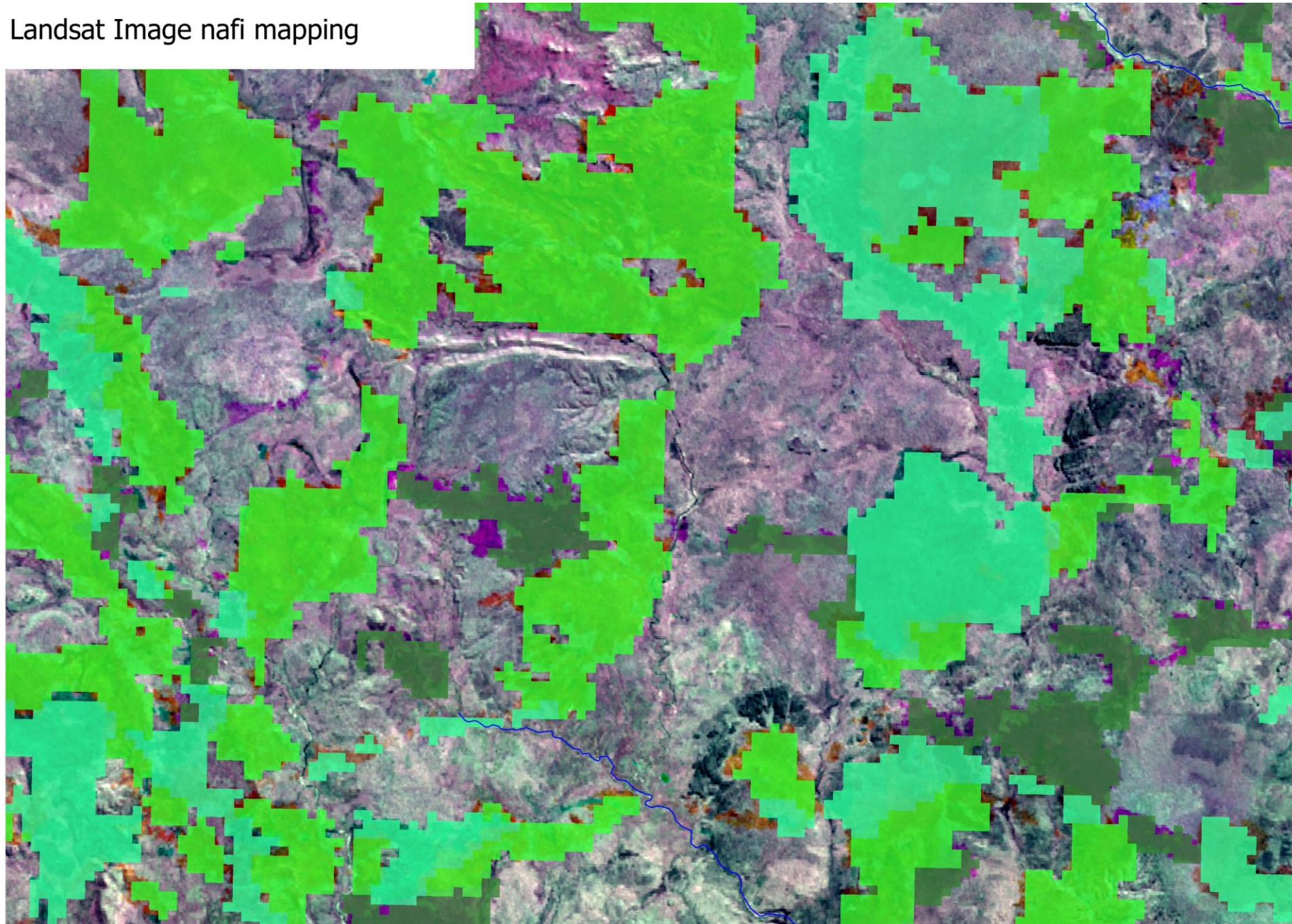
Landsat Image enhanced june 2017



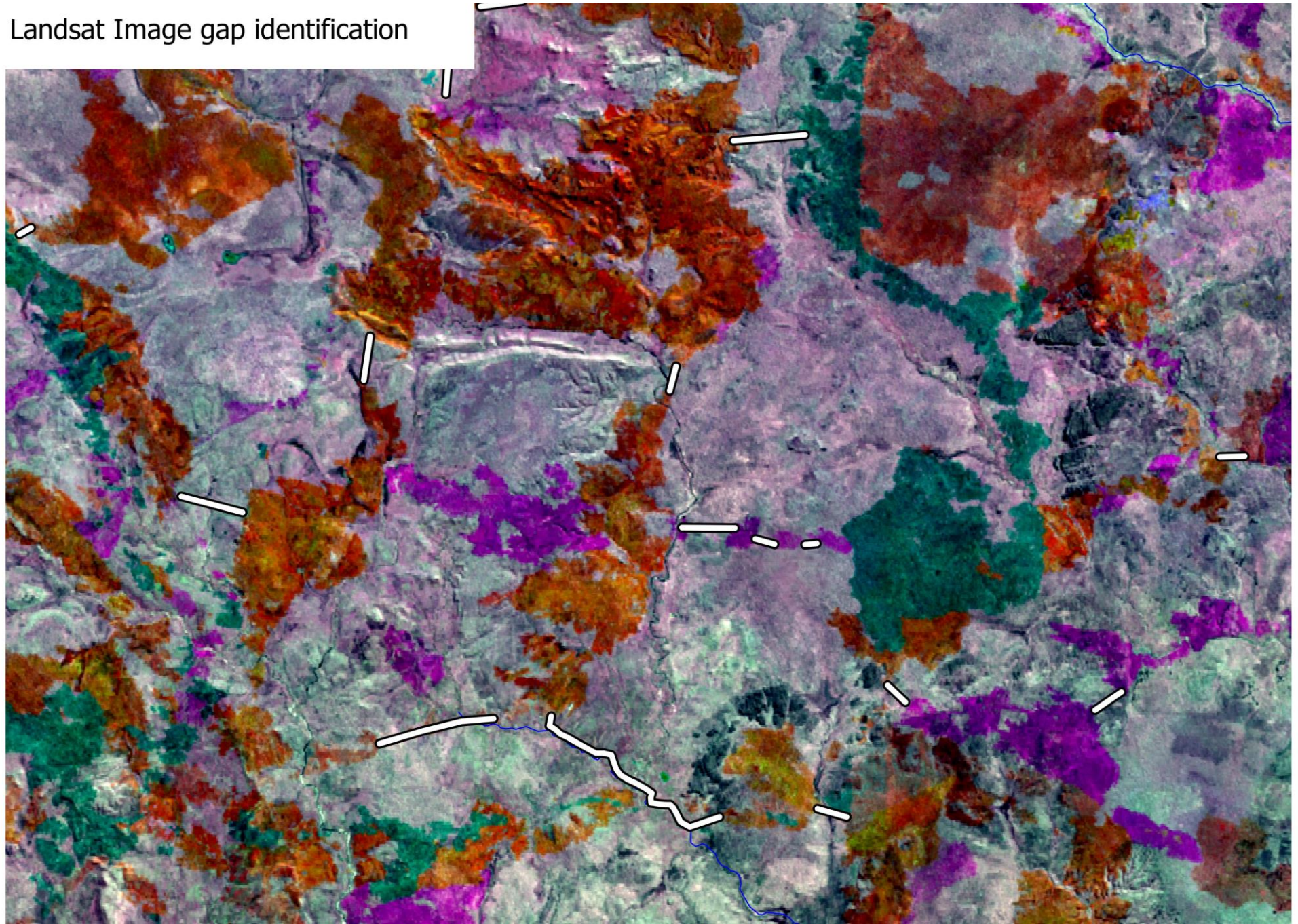
Landsat Image July 2017



Landsat Image nafi mapping

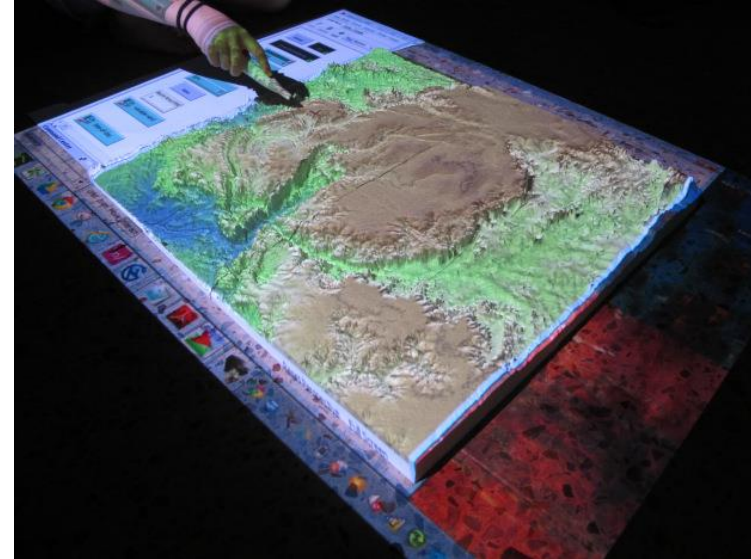


Landsat Image gap identification



Hardware

- Paper maps
- Android tablets and Rugged PC
- Projector
- 3D printed surface



Innovations in 3D visualisation

- Interactive 3D tactile geosimulations using 3D printed and sand models.
- Building engagement with spatial data-sets participation in planning



Innovations in 3D visualisation

- 3D fire simulation applications for understanding fire behaviour in complex landscapes and supporting cross cultural discussions around strategic fire management.



