

# Collaborating to protect threatened species



Kelly Dixon



Peter McDonald



Jasmine Vink

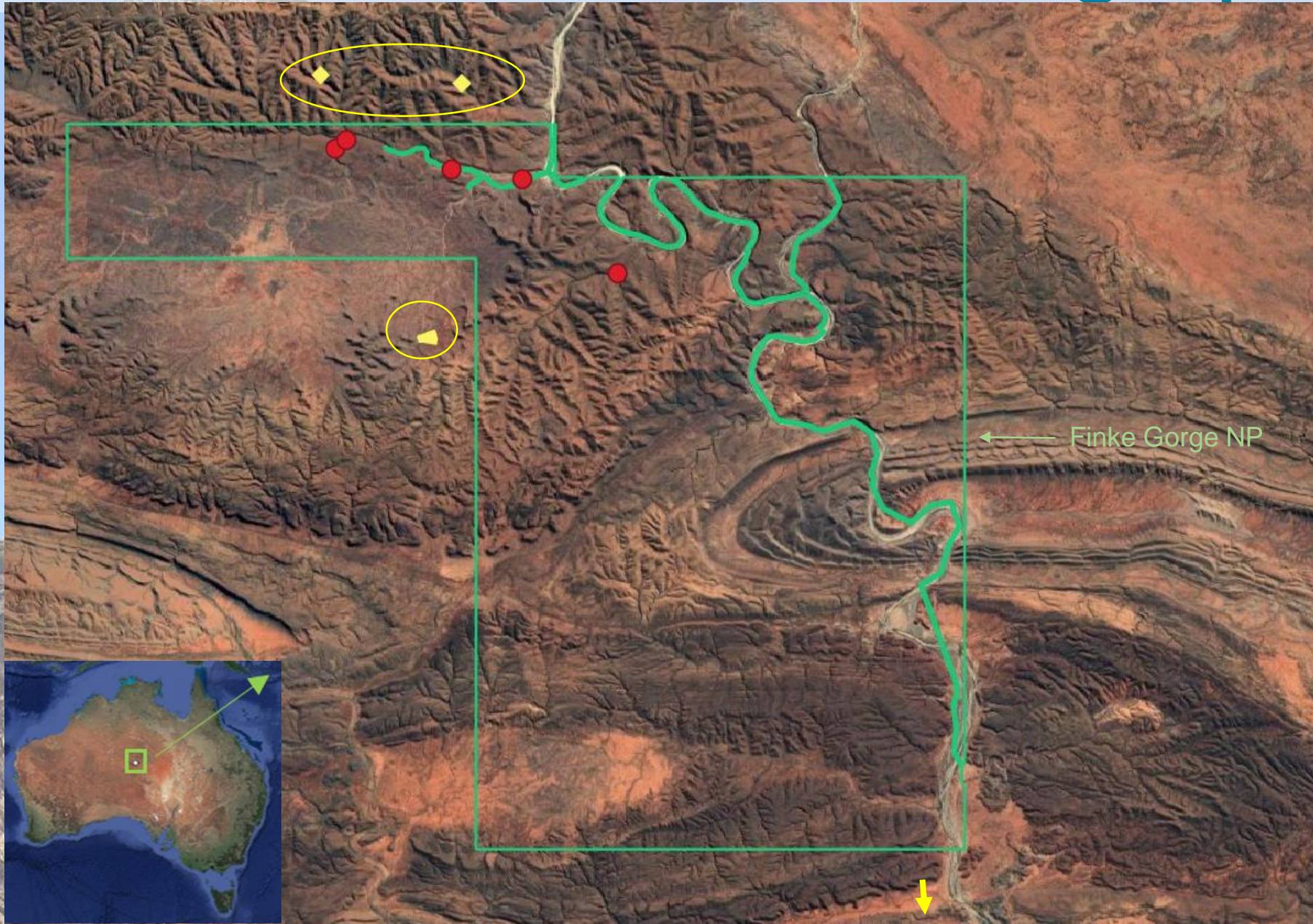


Kelly Dixon

Kelly Dixon | ecologist



# Central Australian red cabbage palm



# Threats



Invasive  
buffel & couch  
grass



Inappropriate  
fire



Trampling &  
grazing by  
horses &  
cattle



Tourism  
impacts



Changed  
hydrology



Reduced  
gene flow



# Population health surveys



- TNRM + NTG flora & fauna + botanist
- Three sites on Ntaria Aboriginal Land Trust
- Consultation with Traditional Owners and Tjuwanpa Rangers
- Low juvenile recruitment
- Some buffel grass
- Large stand – severe horse trampling, browsing



# Future work & collaborations



- Palm population health surveys inside Finke Gorge National Park
- Identifying strategic actions to prevent further decline
- Implement fire, weed & feral animal management plans
- Parks staff
- Tjuwanpa women rangers
- Tjuwanpa men rangers



# Central rock-rat



Critically endangered, mammal most likely to become extinct in next 20 years

Known from only three ranges in central Aus

# Threats

- Extensive fire
- Predation by feral cats
- Interaction between both



# Monitoring & feral cat control

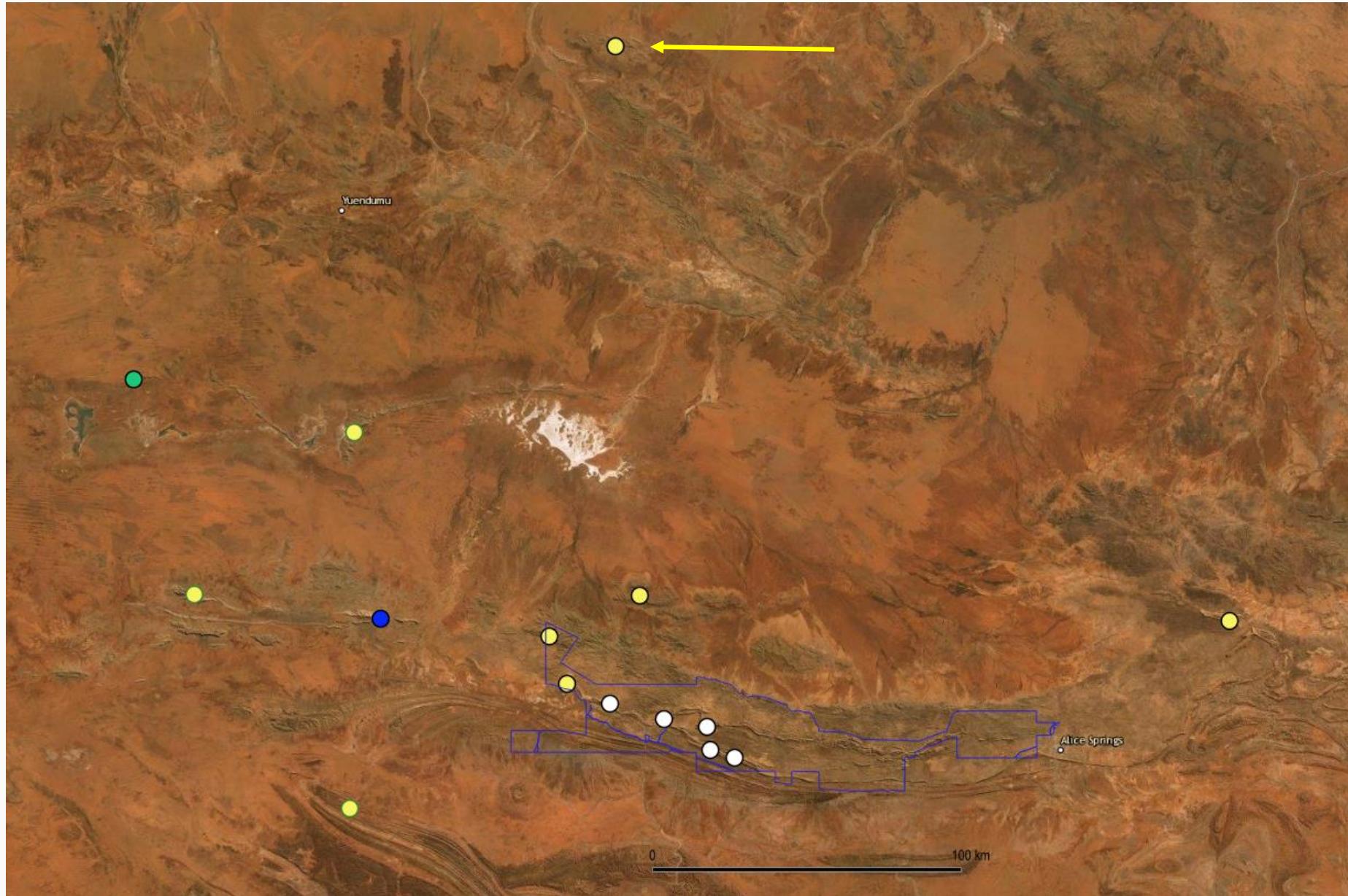


- Cat detections reduced post-baiting
- Rock-rats found in two of the four survey sites





# Rock-rat camera trap retrieval from Mt Liechhardt





# Future work & collaborations

- Rock-rat monitoring around Mt. Edward, Haasts Bluff  
Aboriginal Land Trust
- Habitat surveys
- Fire management planning
- Potential new survey areas
- Central rock-rat conservation planning workshop



# Greater bilby

A Greater bilby is shown in its natural habitat, standing in a burrow. The animal has long, upright ears and greyish-brown fur. The background is a reddish-brown soil with some roots visible.

Largest of the bandicoots

Listed as Vulnerable in NT

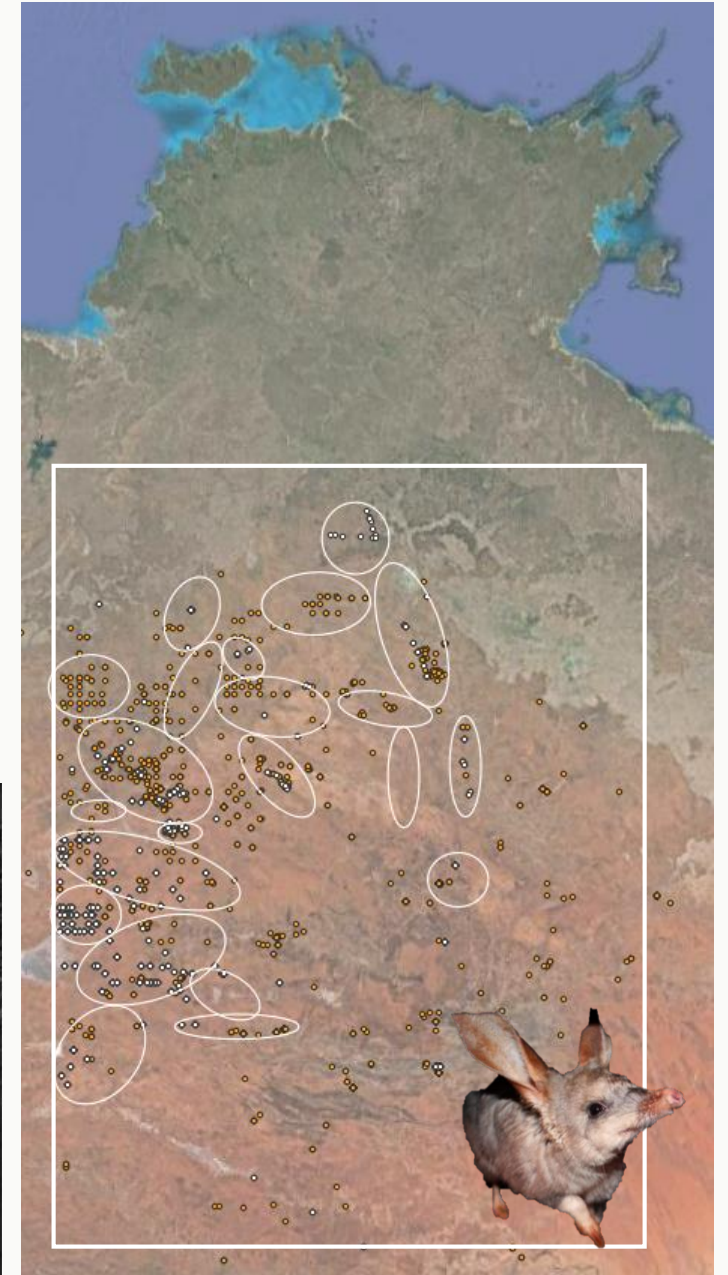
Disappeared from >80% of former range

# Threats

Predation by feral cats and foxes

Larger, more intense fires

Habitat loss





# Project work & collaborations

- Fire management for food plants and habitat
- Predator monitoring & management (foxes & cats)
- Bilby surveys and habitat monitoring
- Facilitate development of a collaborative regional bilby management plan



Source: Anja Skroblin

# Warlu planning committee meeting





# Surveys for the northern hopping-mouse

- Last mainland sighting 1973
- Better describe northern hopping-mouse population distribution
  - Arnhem Land mainland and Groote Eylandt
- Conduct habitat assessments
- Inform conservation advice





Over 2,800 km of surveys – aerial + on-ground + camera trapping

All historic mainland records







Other native rodents found on mainland camera traps

No northern hopping-mice signs found on the mainland

