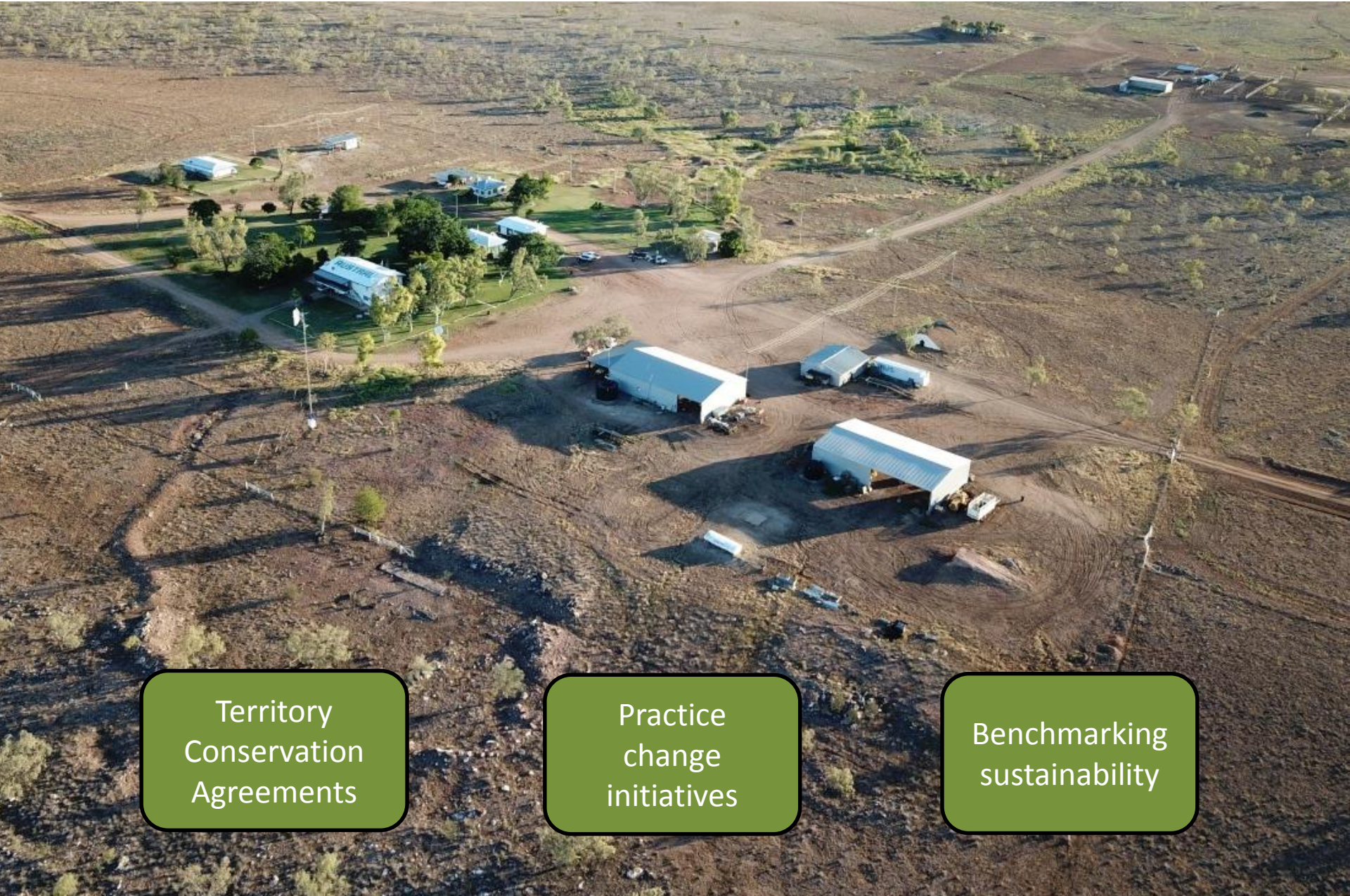




**Territory**  
**Natural Resource**  
**Management**

# **Sustainable Pastoral Business Program**

# Sustainable Pastoral Business Program



Territory  
Conservation  
Agreements

Practice  
change  
initiatives

Benchmarking  
sustainability

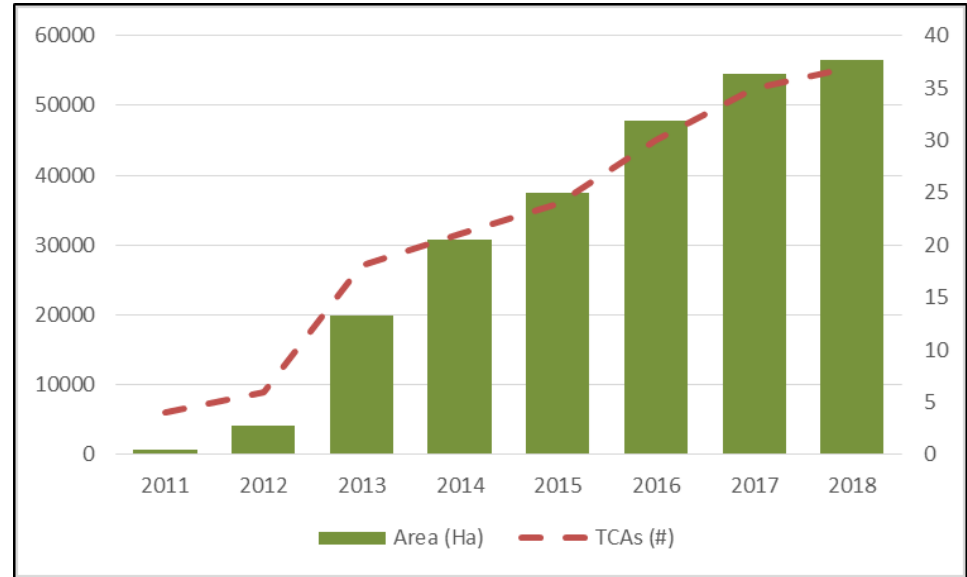


**Territory Conservation Agreements (TCAs) support landholders to protect and manage important natural areas on their property.**

**Territory Conservation Agreements are voluntary and we partner with landholders for 10 years to support their management goals for a site.**



- 38 Territory Conservation Agreements have been established over 45 sites and covering over 55,000ha
- The program has found a natural partner in the pastoral industry, and has supported multiple-use strategies on working properties.
- 12% of all pastoral leaseholds in the Territory are partners with the program.



- An independent program review reported high levels of satisfaction with the program
- Close to a **100%** maintenance of all agreements established.
- **96%** of surveyed reference (monitoring) points within TCA sites have either maintained or improved condition.
- **88%** of participants reported that TCAs had delivered enterprise benefits to their business
- Three case studies of TCA management under different types of pastoral operations indicated that TCAs would pay off their cost of establishment within **10 years.**

*“Where the waterholes have been fenced off we’ve seen an improvement in the water quality. The riparian zone is in better condition and filters the water on the water to the swamp”*

*“The TCA, and the smaller paddocks have cut back our mustering costs so it is real money we are saving. It is maybe 20-30 hours of helicopter time so it is a lot of money”*

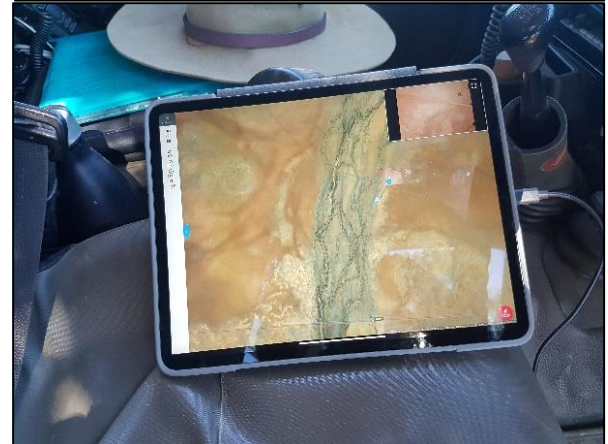
*“We are committed to the TCA process. In theory we could have saved \$30k by using the TCA instead of paying for agistment. We took the long term view”*

# Practice change

- Supporting producer lead initiatives to change and improve land management practices
- Working together with producers to monitor how practice changes enhance ecological health and productivity on pastoral lands.

This practice change portfolio currently includes:

- Managing grazing pressure through spreading water points
- Application of digital mapping and analysis tools for property management
- Use of stock grazing to manage fuel loads and reduce fire risks
- Use of stock grazing for weed management



# Benchmarking sustainability

There are opportunities for Territory beef producers to benefit from demonstrating sustainable practices.

- Work with beef producers, partner agencies and institutions to identify appropriate Territory benchmarks.
- Support transition practices to enable producers to achieve these benchmarks

Each year, a **FEW HUNDRED SPECIES OF NATIVE PLANTS**

provide more than **3 MILLION TONNES**

of feed required to sustain the Northern Territory beef herd.

Looking after native vegetation is great for the environment and the pastoral industry.



**PASTORAL STATIONS** cover **45%** of the NT

over **700,000km<sup>2</sup>**

**MAINTAINING & IMPROVING**

the condition of this **NATIVE VEGETATION** is a great outcome for the environment and the pastoral enterprise.



# Benchmarking sustainability

There are growing opportunities for Territory beef producers to benefit from demonstrating environmentally sustainable practices. TNRM will:

- Work with beef producers, partner agencies and institutions to identify appropriate Territory benchmarks
- Promote the transition to achieve these benchmarks in alignment with national standards such as the Beef sustainability framework.



Each year, a **FEW HUNDRED SPECIES OF NATIVE PLANTS**

provide more than

**3 MILLION TONNES**

of feed required to sustain the Northern Territory beef herd.



Looking after native vegetation is great for the environment and the pastoral industry.



**PASTORAL STATIONS**

cover **45%** of the NT

over **700,000km<sup>2</sup>**

**MAINTAINING & IMPROVING** the condition of this **NATIVE VEGETATION** is a great outcome for the environment and the pastoral enterprise.

