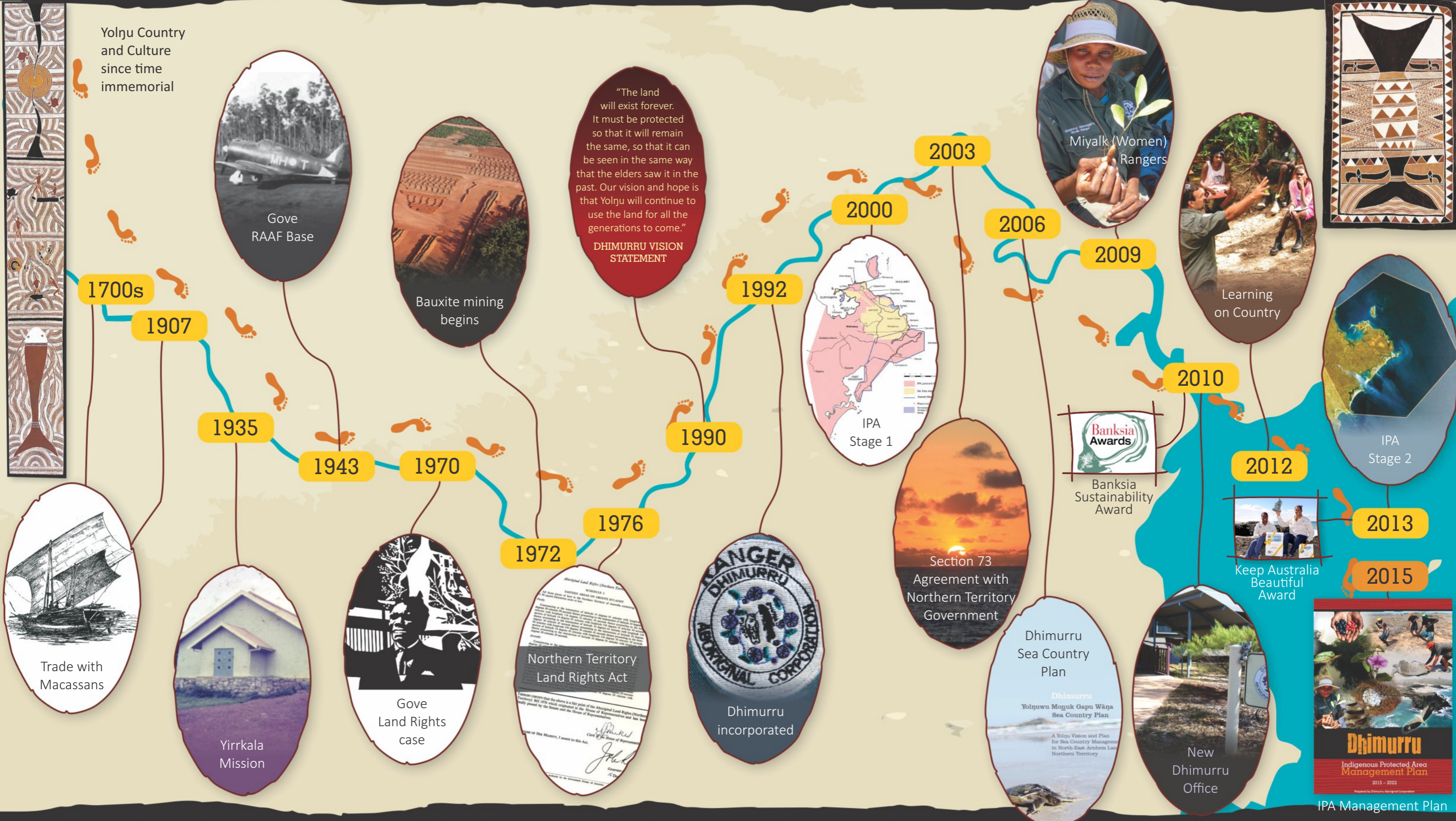


# Dhimurru IPA Timeline



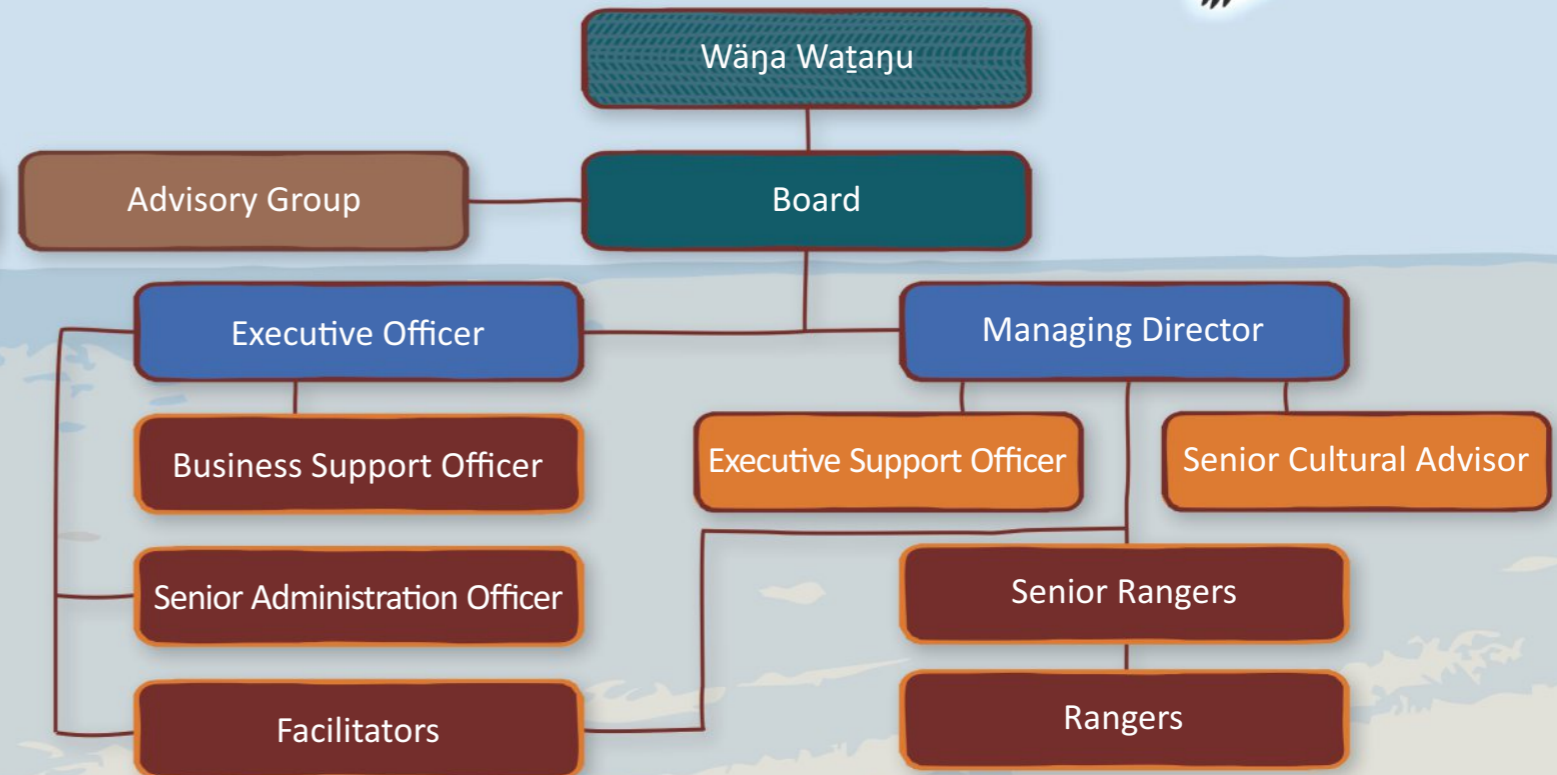
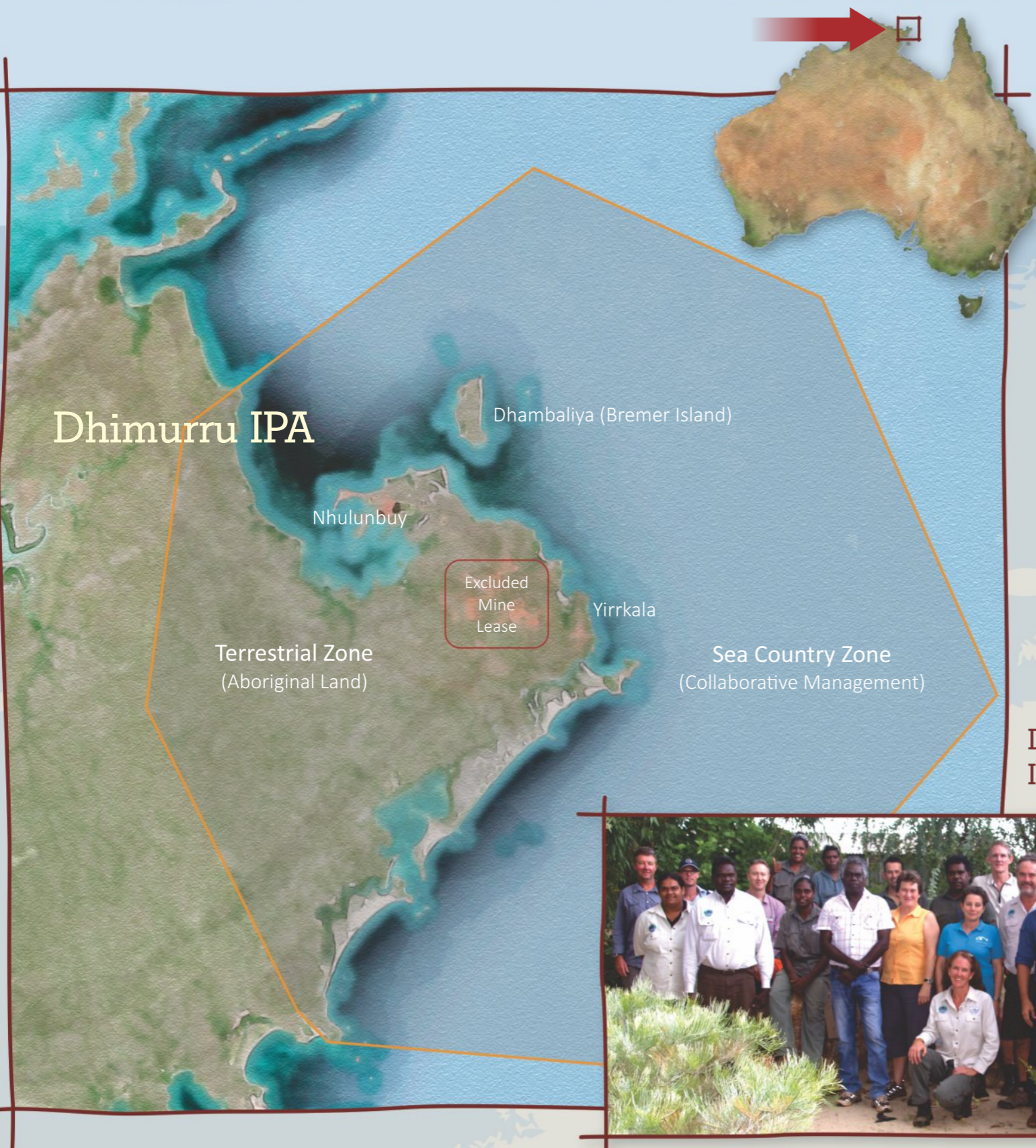
- Yolŋu control and empowerment
- Collaborative Partnerships
- Both ways management
- Conserve & enhance IPA values
- Respect for Yolŋu values
- Ŋapaki recreation values





# Dhimurru IPA

## Governance & Management



Dhimurru staff with IPA Advisory Group members




### IPA Advisory Group

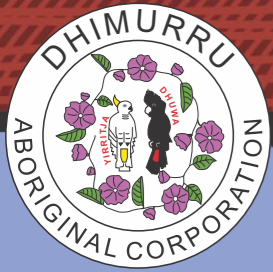
- 
 Department of Agriculture  
 Department of the Environment  
 CSIRO  
 Department of the Prime Minister and Cabinet  
 Australian Fisheries Management Authority

---

- 
 Parks and Wildlife Commission of the Northern Territory  
 Northern Territory Department of Primary Industry and Fisheries  
 Northern Territory Department of Land Resource Management

---

- 
 Yirrkalā Rangers
- 
 Amateur Fishermen's Association of the Northern Territory
- 
 Northern Territory Seafood Council
- 
 Northern Prawn Fishery Industry Pty Ltd
- 
 Northern Land Council
- 
 East Arnhem Land Tourism Association



# Heritage Values of Dhimurru IPA



## Shared Macassan Heritage

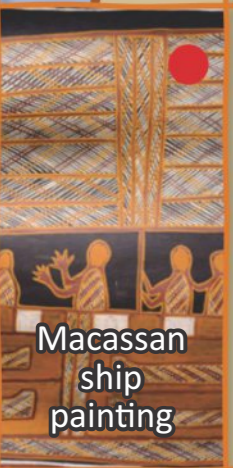
Stone arrangements



Macassan canoe



Macassan ship painting

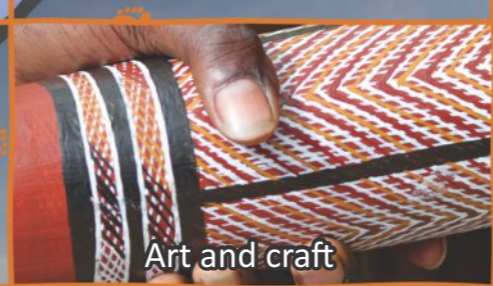


Tamarind tree at Macassan site

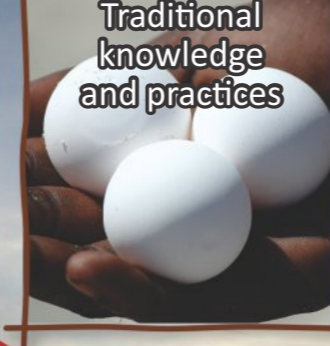


## Yolŋu Heritage

Art and craft



Traditional knowledge and practices



wāŋa  
home, land

dhāwu  
stories, history

manikay  
and bungul  
clan songs  
and dance

Yolŋu Rom  
(Law)

miny'tji  
totemic  
designs

gurrutu  
kinship

Ceremony



Sacred and significant places



Connection to country



Culturally significant species

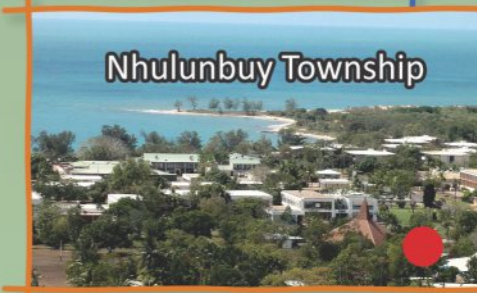


## Shared European Heritage

Yirrkala Mission



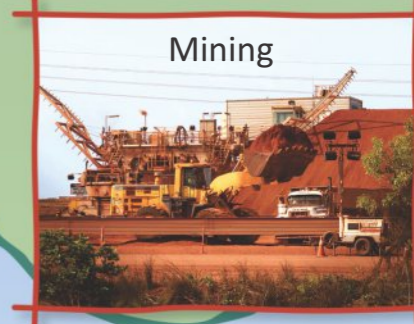
Nhulunbuy Township

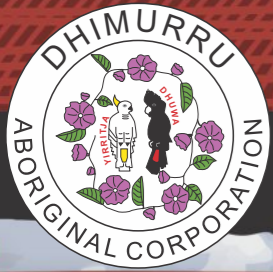


WW II Airfield



Mining





# Conservation Significance of Dhimurru IPA

## Ecological Diversity

## Local, National and International Significance



- Spectacular rocky and sandy coastlines and islands
- Dune fields and beach ridge plains
- Bauxite plains and tall open eucalypt forest
- Numerous patches of monsoon forest
- 13 frogs, 76 reptiles, 207 birds, 35 mammals
- Most extensive and diverse coral reefs in the NT
- Diversity of fish, sea snakes and other marine life

- NT Conservation Site of International Significance
- Five sites on Register of National Estate for natural values
- Overlaps with Wessel Commonwealth Marine Reserve
- 18 threatened species
- Many species endemic to NT
- Nesting sites of four marine turtle species
- Breeding aggregations of terns and common noddy
- 54 migratory bird species
- Largely intact land and sea country environment

Large breeding colonies in the IPA

Roseate Tern  
ḡurula

Rare plant first recorded at Yirrkala

Solanum  
yirrkalense

Dugong  
yinytjapana

One of the world's  
rarest mammals

Snubfin dolphin  
Buku Yolḡu

One of four marine  
turtle species  
breeding in the IPA

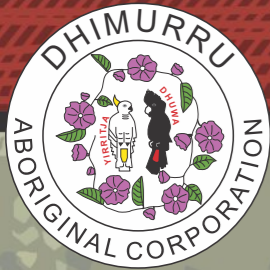
Green Turtle  
marrpan

Saltwater Crocodile  
bāru

Gove Crow Butterfly  
Boḡba

Only found in  
northwest Arnhem

Photo: Dr Michael F. Braby



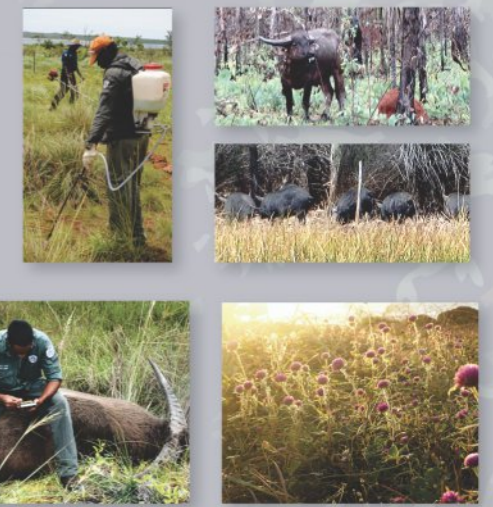
# Threats and Management Responses

## Unsustainable Use

- Monitor resources
- Collaborate with users and managers
- Support compliance



- Weed control and eradication
- Prevent introduction
- Focus on mission grass
- Monitor and control buffalo and pig numbers
- Monitor and eradicate yellow crazy ant outbreaks

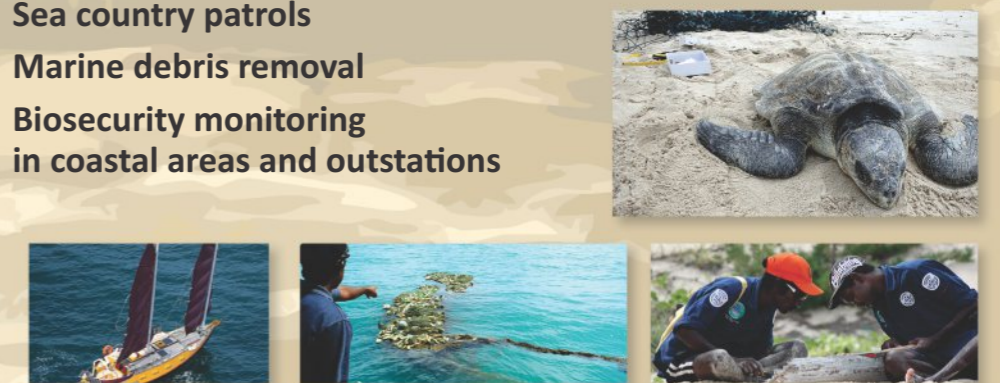


## Weeds and Feral Animals

- Require visitors to obtain permits
- Maintain Designated Recreation Areas
- Fences and signage
- Ranger patrols
- Beach clean-ups



- Sea country patrols
- Marine debris removal
- Biosecurity monitoring in coastal areas and outstations



## Visitor Impacts

## Marine Debris and Biosecurity



- Hazard reduction burns
- Monitoring fire plots
- Satellite fire scar monitoring
- Fire management plan

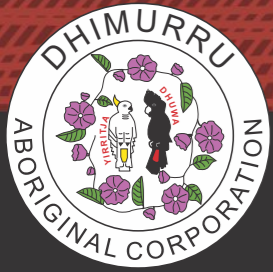


## Changing Fire Regimes

- Site protection
- Support for ceremony
- Recording and applying Traditional Knowledge
- Learning on Country
- Inter-generational knowledge transfer



## Loss of Cultural Knowledge

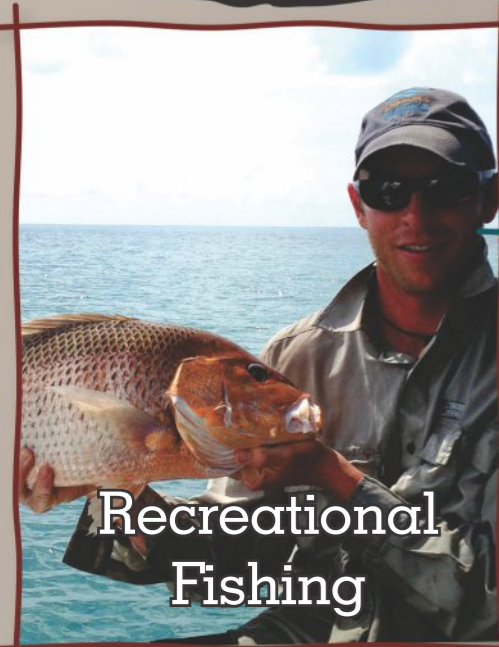


# Livelihoods in Dhimurru IPA

Sustainable Use

Protecting Country and Culture

Sharing Resources



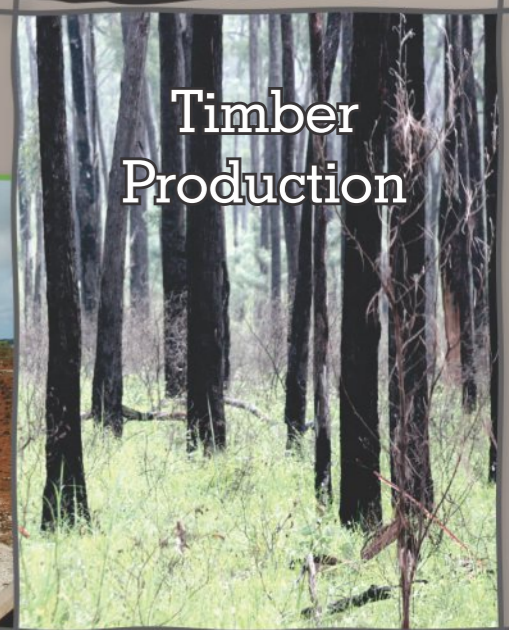
Recreational Fishing



Research



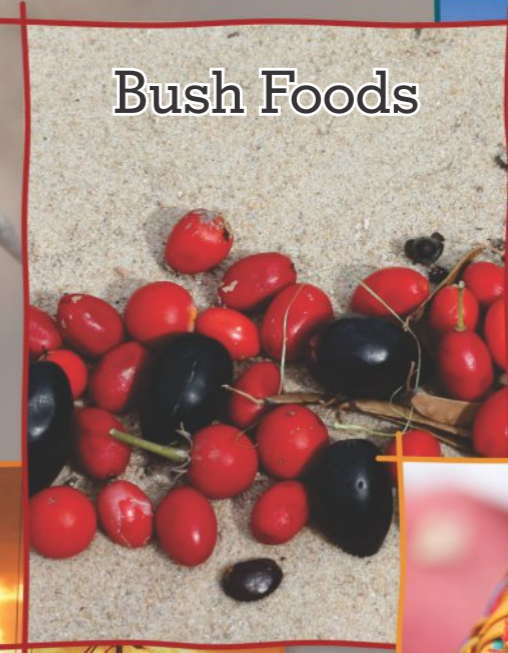
Tourism



Timber Production



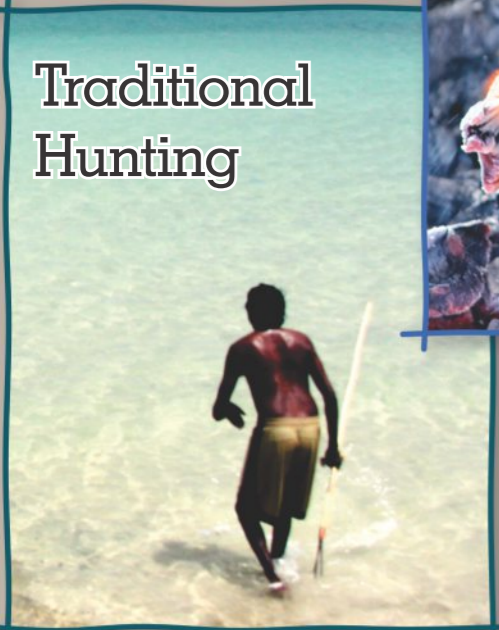
Seafood



Bush Foods



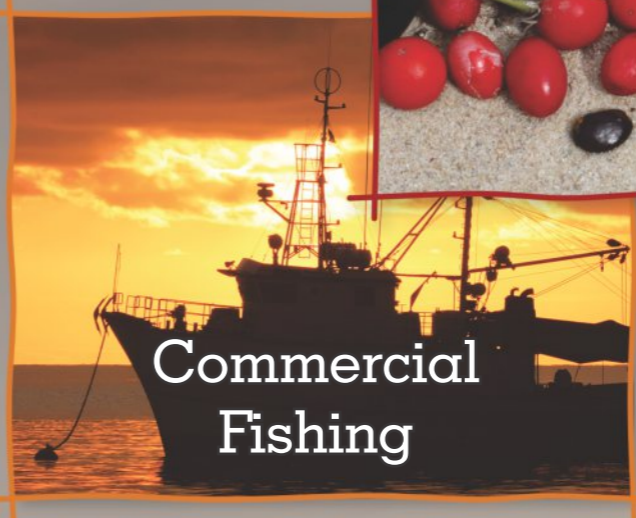
Shipping



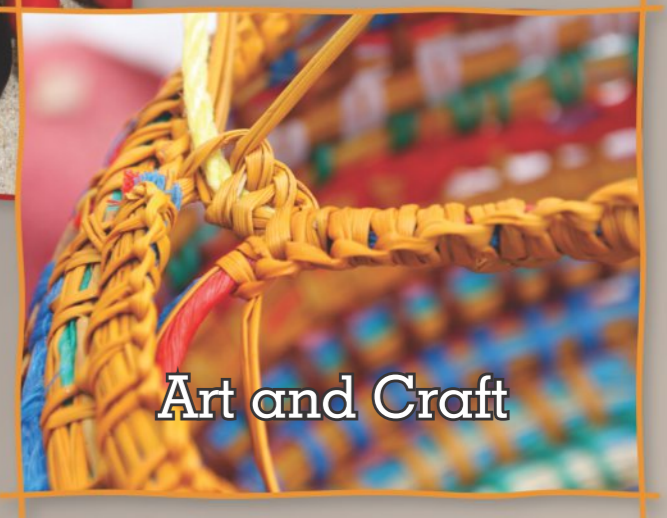
Traditional Hunting



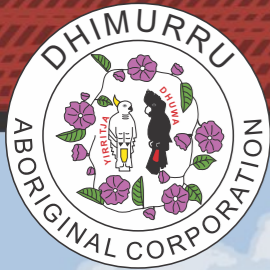
Ranger program



Commercial Fishing



Art and Craft



# Dhimurru Learning on Country (LoC) Program



In partnership with



Both ways education



Prepare future Yolŋu landowners for managing country



Kids in school

## The Aim



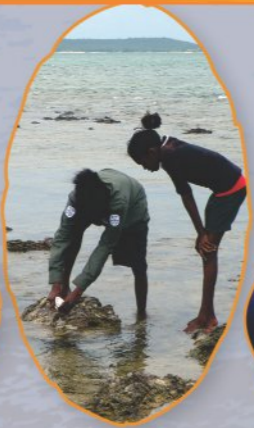
Healthy and strong young people



Protecting local culture for future generations

Inter-generational knowledge transfer

Greater employability



Upskilled rangers



Classroom follow-up



Inspiration

## The Results



Certificate of Conservation and Land Management



Inspired young people



Connection to country

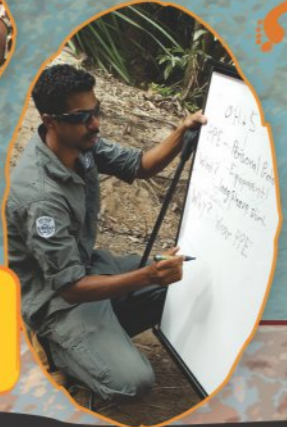


On country learning



Yolŋu experts, rangers and teachers providing instruction

## LOC in Action



Yolŋu foundation for mainstream curriculum