

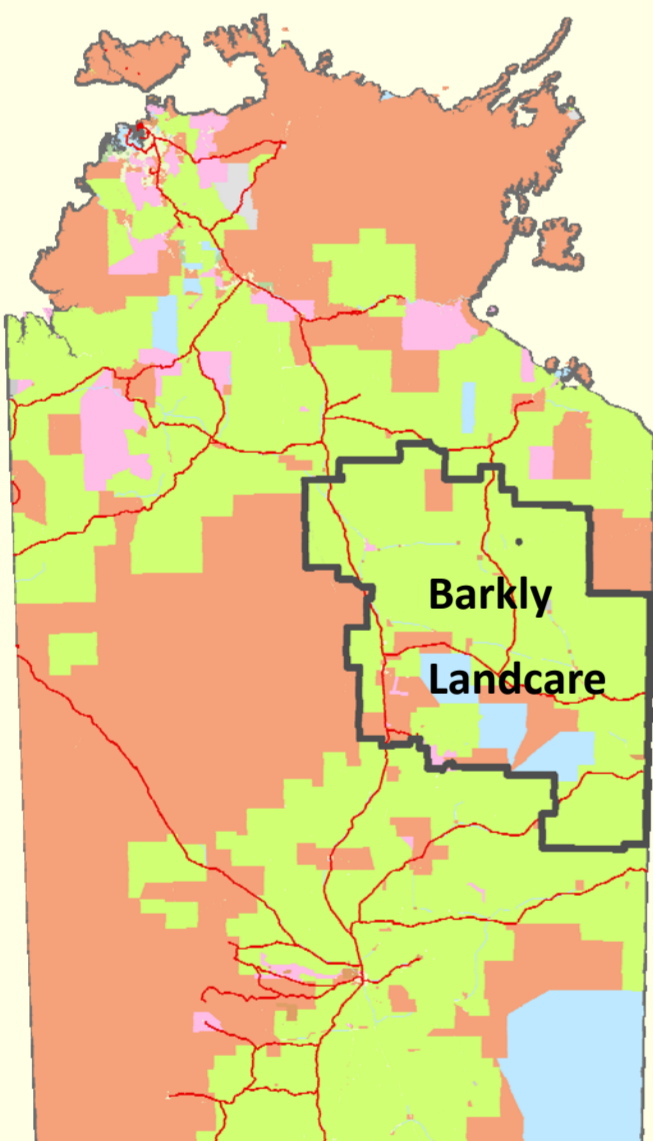
BARKLY LANDCARE AND CONSERVATION ASSOCIATION

WHO ARE WE AND WHAT DO WE DO?



L-R: TNRM Regional Landcare Facilitator Naomi Wilson, Barkly Landcare President Chris Towne, Barkly Landcare Coordinator Angela Carpenter. On Brunchilly Station inspecting 2015 weed spraying carried out by MTP Contracting under a TNRM grant with in kind contribution by S Kidman and Co and Barkly Landcare.

Barkly Landcare and Conservation Association is run by a committee of primary producers, for primary producers. Barkly Landcare is situated within the Barkly Tablelands region, as indicated on the map below



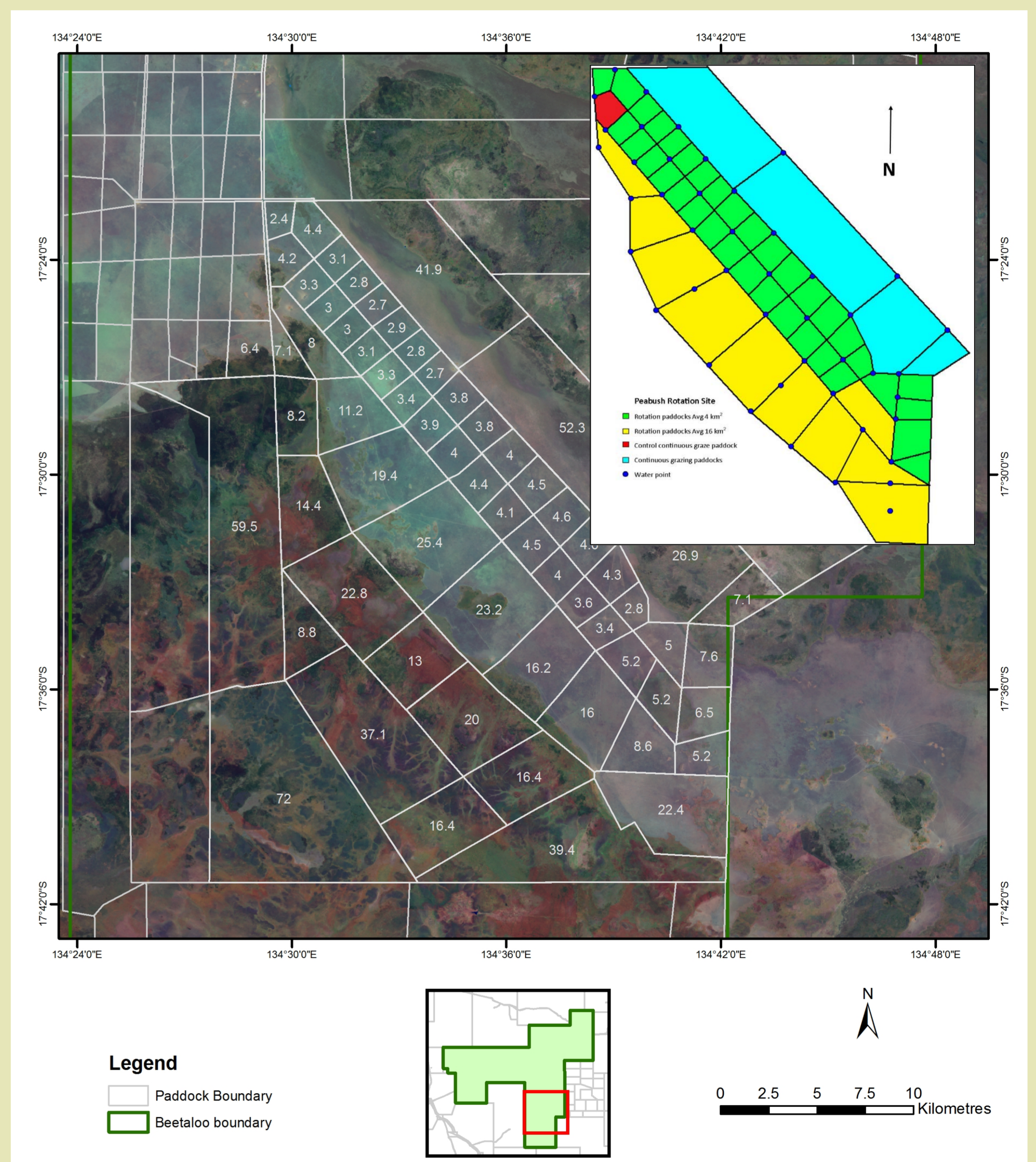
Together, members seek better ways to manage soil, pasture, watering points and weeds; methods that are sustainable and mutually beneficial to the environment and to the pastoral industry.

Members can connect with information and research, access funding opportunities and undertake natural resource management in a strategic, and collaborative way.

Members are reminded of their obligations by their peers. Weed control is an ongoing priority in the region.

Our

Projects: Beetaloo Rotational Grazing Trial



The project is jointly funded through Barkly Pastoral Company, Barkly Landcare and the Australian Government's National Landcare Programme. Other partners are the NT DPIF and Desert Wildlife Services. The project has sparked the interest of pastoralists in the region who wish to reduce overgrazing around watering points and increase utilisation of other areas. Cattle spend 3-5 days in each paddock and pass through 2-3 times per year. There are two watering points in each paddock. Monitoring of cattle performance, pasture and biodiversity is undertaken. The results including modelling and cost benefit analysis will be available by mid 2016.



Barkly Landcare | 99 Patterson St, PO Box 36, Tennant Creek NT 0861 | Phone: (08) 8962 4494 | Fax: (08) 8962 4480 | Email: info@barklylandcare.org.au

