

Department of Environment and Natural Resources

Working quickly, working together – responding to new high priority weed incursions in the NT

Susan King / Weed Management Branch





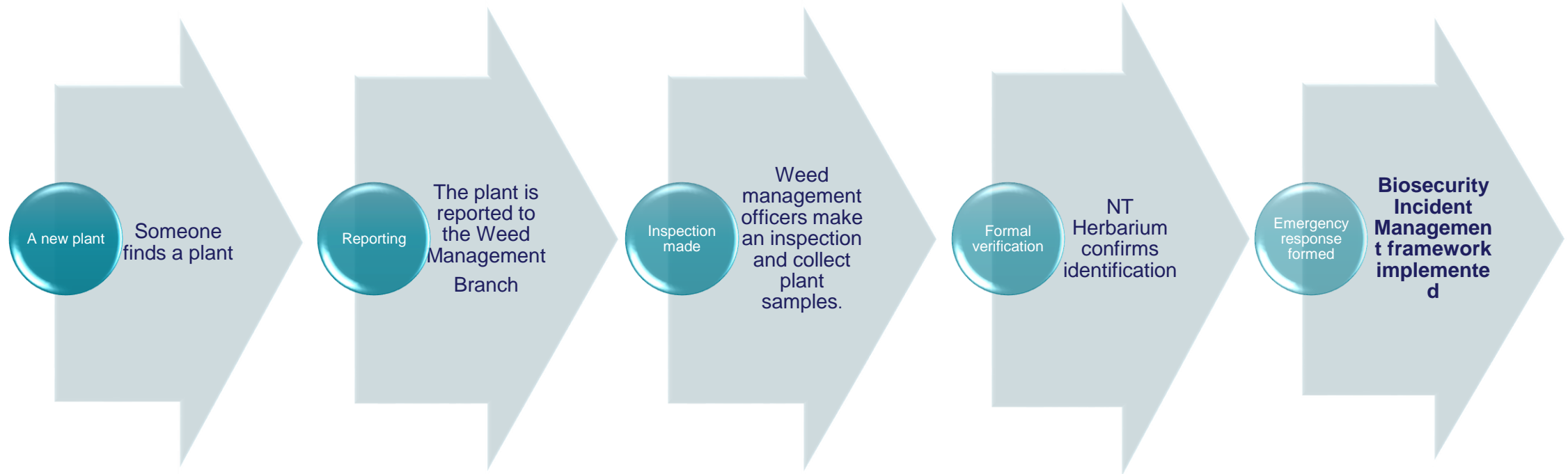
Weeds are one of the biggest problems facing the Northern Territory

The NT is constantly at risk to new weeds – we are all in this together

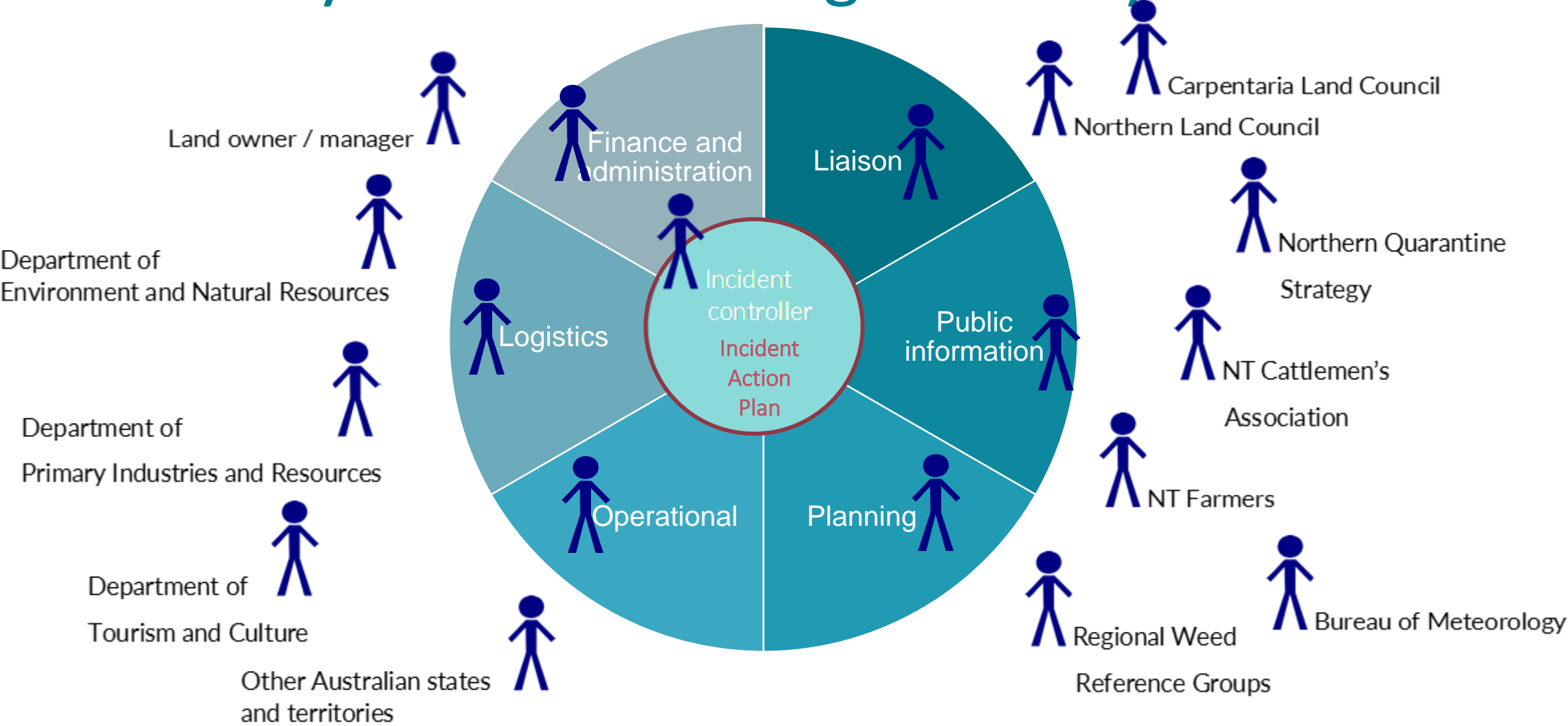
Over the last 12 months there have been 3 significant weed incursions in the NT

It is important to get in early and work together when dealing with new weeds

In the beginning



Biosecurity Incident Management System

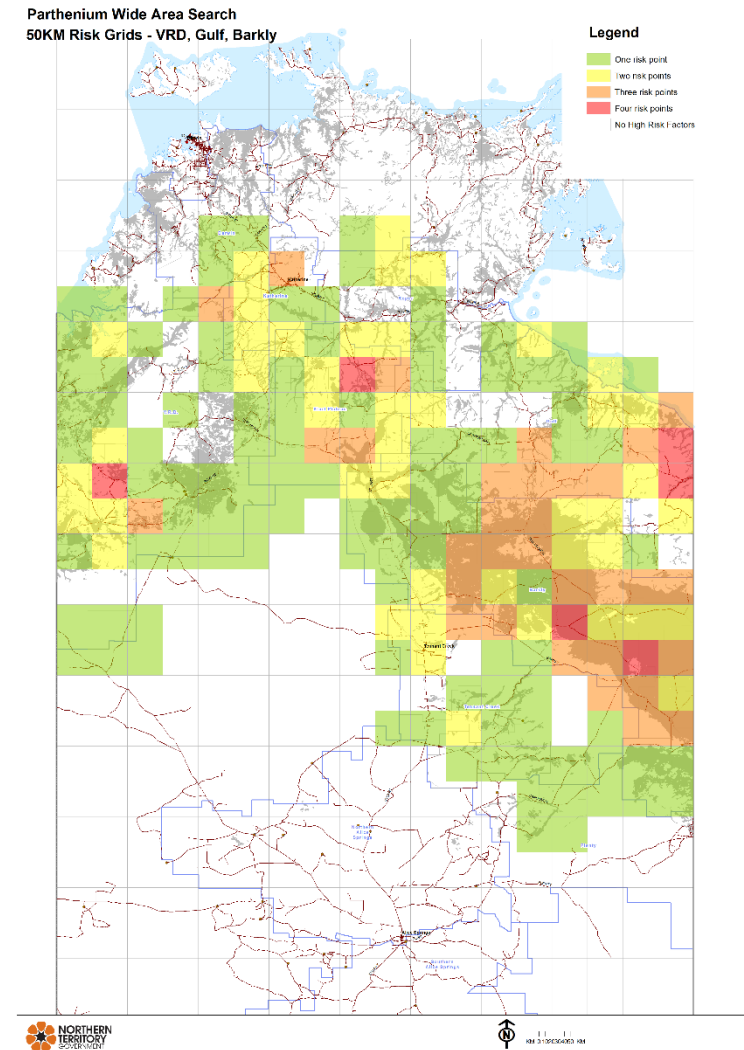
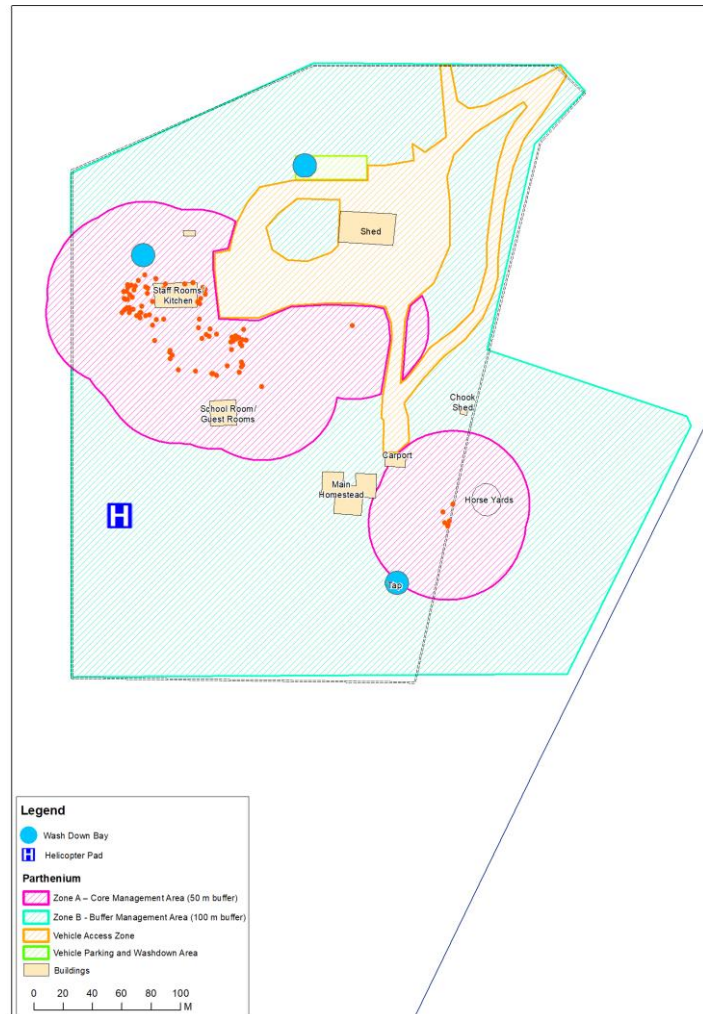




Parthenium weed update

- Parthenium was reported by the land manager in October 2018.
- No further plants have been found outside the incursion location.
- Survey of the area is undertaken 3 out of 4 weeks.
- In March 2019 the last seeding plant was found.
- Once we have rain further surveillance of high risk areas will be undertaken.

Parthenium weed surveillance





Rubber vine update

- Reported by the land manager in March 2019.
- 500 + plants were found and treated with station staff and Park Rangers.
- Location of the largest plant suggests the plant may have been introduced by human means.
- Further surveillance is required.
- A priority is community engagement and capacity building through close working relationships with Ranger groups.



Siam weed update

- Incursion reported by the land manager in July 2019 at the time of flowering.
- Siam is difficult to find in native bushland when it is not flowering.
- About 500 hectares are known to be infested across three separate premises.
- Efforts have focused on finding where Siam weed is growing.
- Limited control has been undertaken to date due the risk of spread to control was too great.
- A decision to contain or eradicate Siam weed in the NT will be made after the next flowering event in August 2020.



NORTHERN LAND COUNCIL
Our Land, Our Sea, Our Life



We're all in this
Together
Protecting our families,
our neighbours, our environment.