

Let's Collaborate

Eradicating Prickly Acacia in the NT

Nathan Mills

Weed Management Branch

Contents

- » Identification and Ecology
- » Prickly Acacia in the Northern Territory
- » Aerial Tebuthiuron Trials
- » Ranger Exchange Program
- » NT Prickly Acacia Project



What is Prickly Acacia?



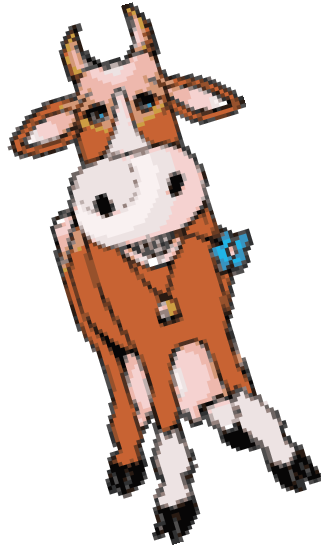
Impacts

Prickly acacia infests more than 6.6 million hectares of across Australia.

- Dense infestations can reduce pasture production
- Thickets restrict mustering and restrict stock access to water
- Infestations exclude native plants and animals, reducing biodiversity

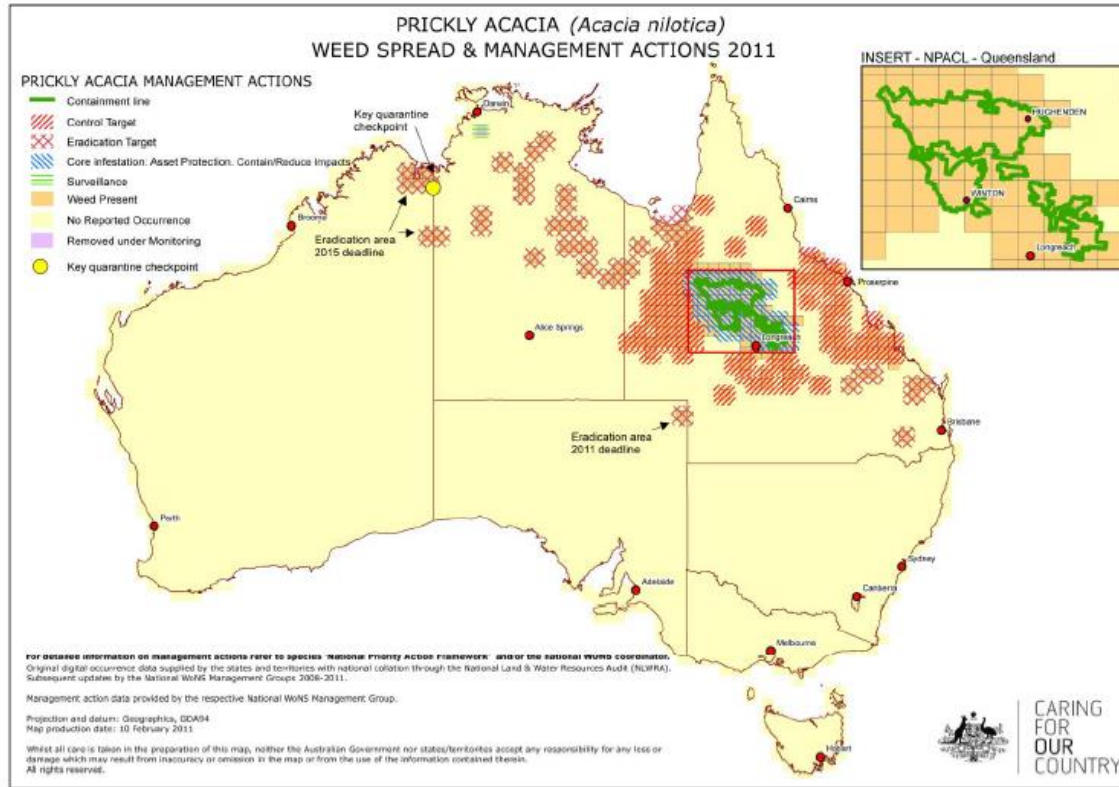


How is it Spread?

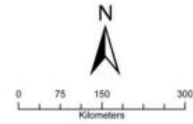
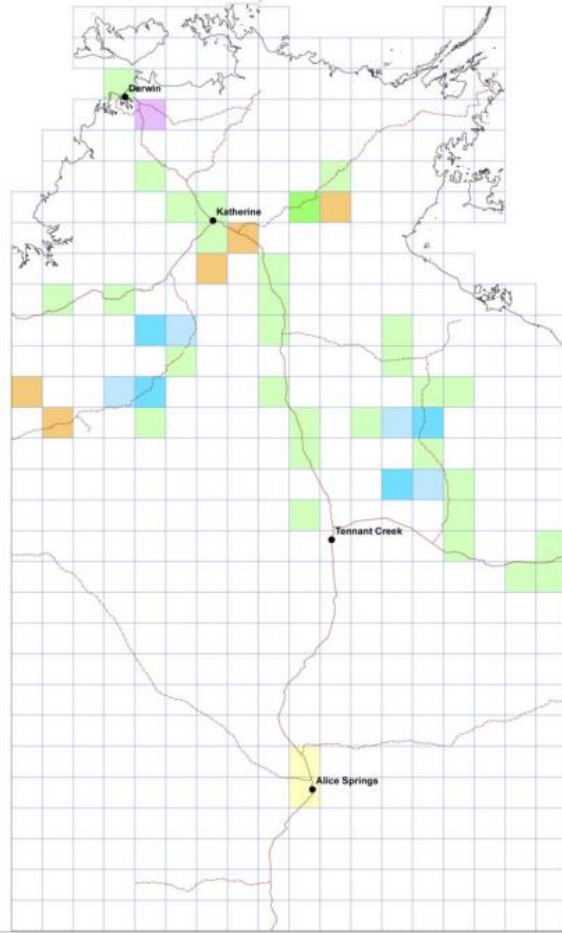




Distribution



Prickly Acacia In the NT



Weed Distribution Description

- Absent
- Eradicated and Monitored
- Present - Density Unknown
- Unknown Occurrence
- Occasional and Localised
- Occasional and Widespread
- Common and Localised
- Common and Widespread
- Abundant and Localised
- Abundant and Widespread

Each grid cell is 0.5 degrees
(approximately 50 x 50 km).

Caution : Weed distribution displayed
may not be limited to this representation

DATA SOURCE

Custodian
Weed Management Branch
Northern Territory Government

Ownership
Source data remains the property of the
various entities who contribute data, and
the Northern Territory of Australia

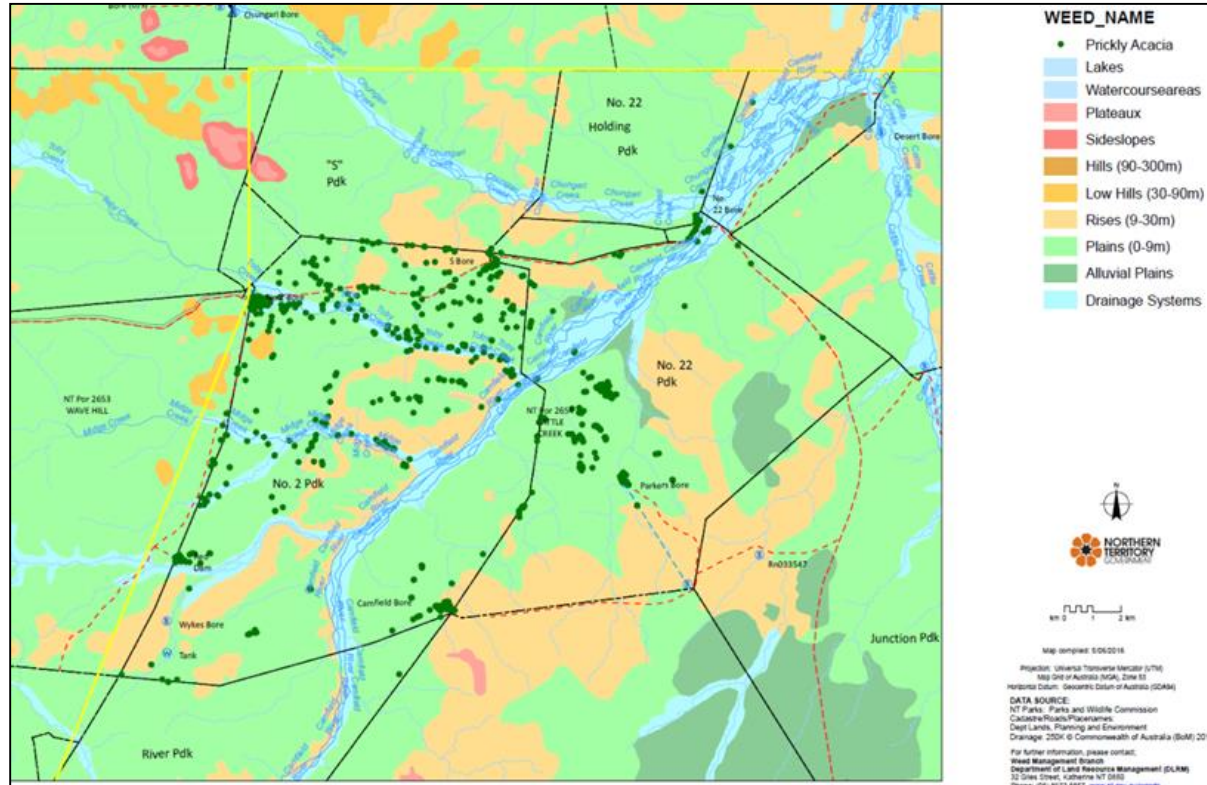
Further information, contact
The Director, Weed Management Branch
Northern Territory Government



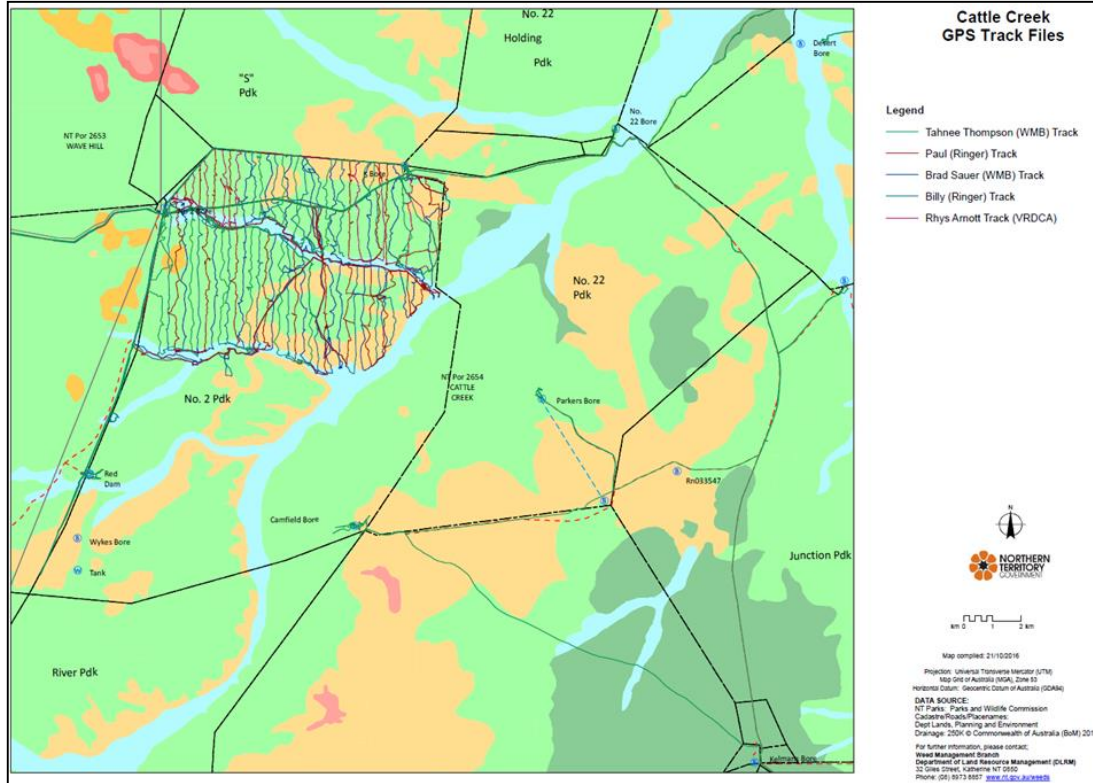
Aerial Tebuthiuron Trials



Aerial Tebuthiuron Trials



Aerial Tebuthiuron Trials



Aerial Tebuthiuron Trials



Ranger Exchange Program



Two Weeks Later



Future Direction

Northern Territory prickly acacia project officer



Prickly Acacia Project

Continue to raise awareness of the risk prickly acacia poses to the NT.



Remote Sensing



NRM Champion



Nathan Mills
Prickly Acacia Project Officer
Phone: 8973 8845
Mobile: 0477 392 222
Email: nathan.mills@nt.gov.au



Thank You

