

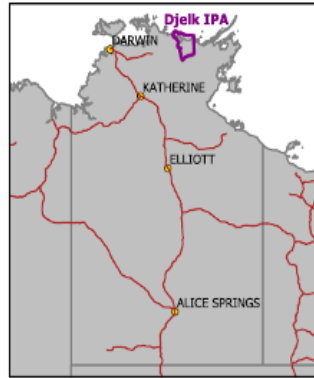
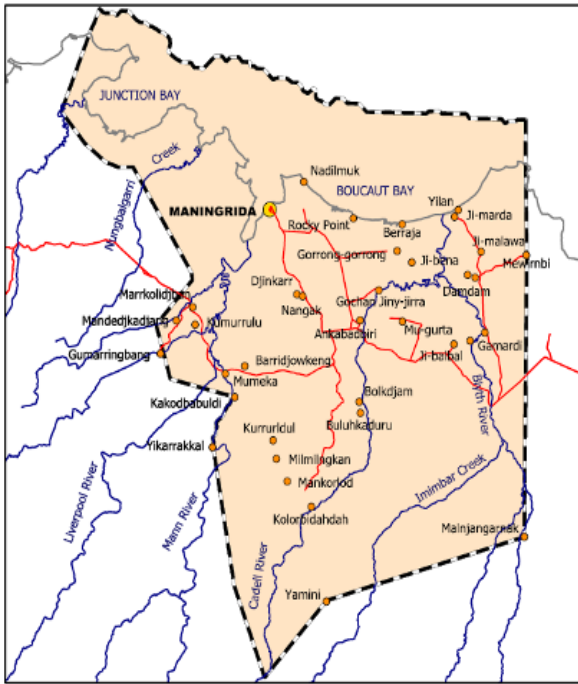
Making a new Djelk Healthy Country Plan



Djelk Rangers
Bawinanga Aboriginal Corporation

Alys Stevens (Tess Heseltine)





The Djelk Indigenous Protected Area
 With our Traditional Landowners, we were very proud to declare the Djelk Indigenous Protected Area (IPA) in 2009.

Our IPA covers over 6,700 km² of Aboriginal Land in central Arnhem Land. It encompasses the country of over 100 clans and more than 12 separate language groups.

Our IPA ranges from the coast, through floodplains, rainforest and savanna to the rocky escarpments of the Arnhem Land Plateau.

Our Djelk IPA Management Plan was written for the five year period between 2009 – 2014.



Plan to make a new plan!

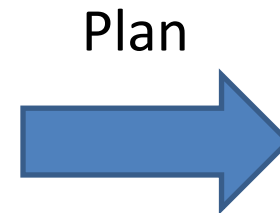
Over ~ 12 months Feb 2014-Feb2015

1. Review the old plan
2. Create the new strategic plan using CAP/HCP
3. Lots of consultations with landowners
4. Develop operational/action/monitoring plan
5. Landowner approval
6. Put them all together



What is a Plan?

A plan is something that shows us how to get from where we are today, to where we want to be in the future.



Why a New Plan for Djelk?

- Our IPA management plan is about to run out (2009 – 2014)
- We want a new plan to cover the whole area of Djelk operations
- We want to build on the work that we have already done
- We want a new plan to focus on jobs that will help country the most
- We want our Landowners to help us decide where we should focus our work

Our Planning Team

We have pulled together a team of people to help us with the planning process for our next management plan:

- Djelk Biodiversity Scientist (Alys Stevens) – to coordinate the development of the plan and input scientific knowledge to the plan.
- Plan Writer (Jennifer Ansell) – to document the planning process, prepare reports and materials for consultations and to write the Djelk Healthy Country Plan for Djelk.
- Planning Facilitator (Stuart Cowell) – to facilitate the large planning workshops and to provide expert advice on the planning process.
- Djelk (Rangers & Manager) – we will develop the content of the plan in collaboration with our Traditional Landowners and conduct consultations.



1. Review the old plan

For each of the 8 key management areas we looked at the management actions listed and asked ourselves 4 simple questions:

- What did we do?
- What didn't we do?
- Why did some things work well and not others?
- Did it make any difference?

We did this review in two stages. First, a small group of senior Djelk staff undertook a desktop review of the management areas. We then used these results to develop summary posters that we further reviewed with all the rangers at a Djelk planning meeting.



1. Review the old plan



Our Results

Overall, we have achieved almost half of what we said we would do in the IPA Plan. Roughly one quarter of jobs we are still to do and one quarter of jobs were not done due to problems that we encountered.

Key Findings

- Jobs that were done and are working well are clearly defined, is work that we have the knowledge and skills to do, and are jobs where we have good support from our partners and stakeholders
- Jobs that are 'still to do' are generally not clearly defined in the IPA Plan
- The problems that have most affected our progress are issues with equipment (especially vehicles), funding, training, time and organisational support

2. Create the new strategic plan using HCP/CAP

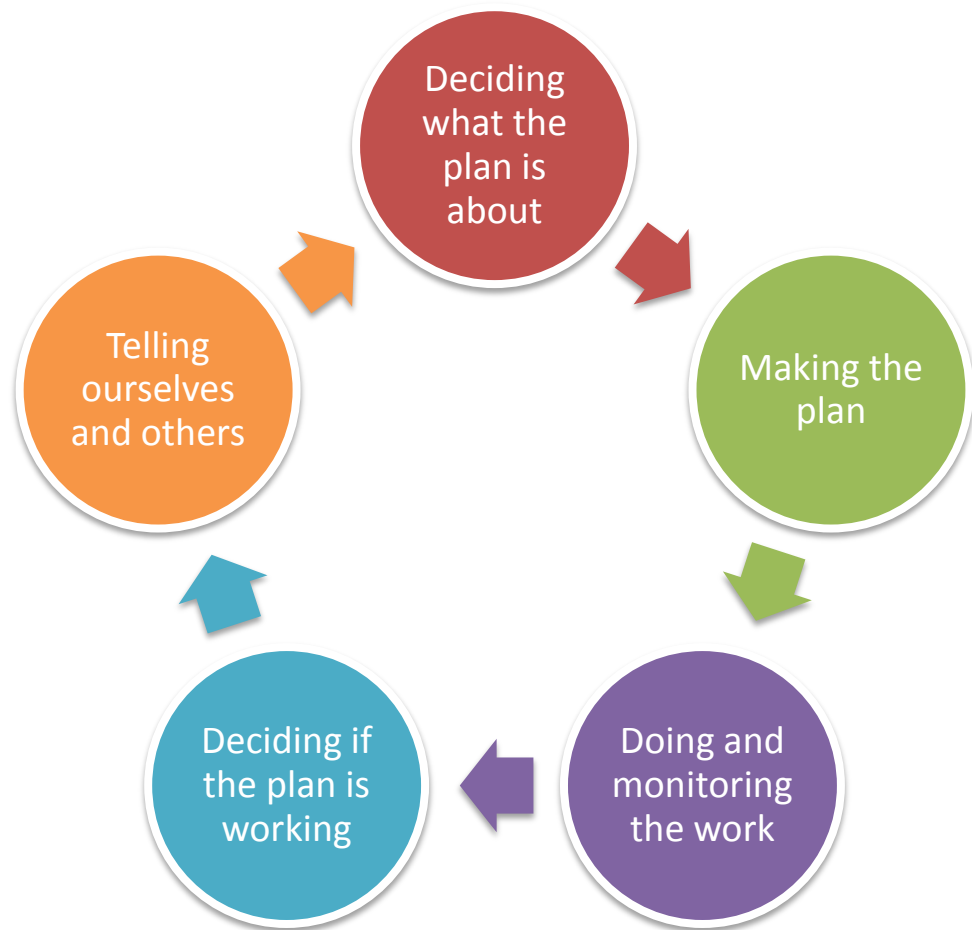
There are five simple steps in Healthy Country Planning.

The idea is to keep going around the circle and keep getting better.

We have now done this circle once around with the old plan.

We have learnt from the review of the old plan and now it is time to use that new information to start back around the circle again.

We need to decide what our new plan is about.



2. Create the new strategic plan using HCP/CAP

- Facilliated workshops with Rangers





Djelk Healthy Country Plan Landowner Consultation



3. Lots of consultations with landowners



Target: Rivers & Wetlands

Sacred Sites?

Freshwater Crocodile?

Eggs (Bird & Turtle)?

Fresh floodwater?

Fish?



Budkorol?

Liverpool River?

Crocodile Nests?

Bush Tucker?

Floodplain?

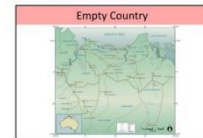
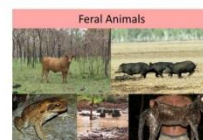
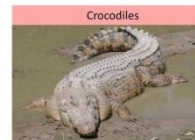
- What rivers & wetlands are important to look after on your country?
- Where are rivers & wetlands healthy on your country?
- What makes rivers & wetlands healthy?

What else?

12



Threats to Rivers & Wetlands



- What are the threats to rivers & wetlands on your country?
- Where on your country are there big problems for rivers & wetlands?

What else?

13

4. Develop operational/action/monitoring plan

What are we focussing on? Ranking, prioritising

What is the situation and where can we have impact?

Where do we want to go? Developing goals that are SMART

How do we know we are on the right track? Indicators – ecological and cultural/social

Strategic plan
informing
operational plan

Operationalising goals – strategies, actions and detailed monitoring plan



| Threat | 1 Year | 5 Years | 10 Years |
|--------------------------------------|---|---|--|
| Buffalo | Reduce Numbers (Control buffalo so that no more than in 2014) | Reduce Numbers to 10,000 | Reduce Numbers to 5,000 |
| Pigs | Cleaner billabongs and less damage (trial different methods in 3 areas) | Maintain clean status of original sites plus add 3 more sites | Good story from Landowners that billabongs are much better |
| Empty Country | Empty Outstations have people there (Djelk Outstation program) | Continue Djelk Outstation program | More people on country |
| Wildfire | Large proportion of IPA with Early Dry Season Fire | Less Wildfire (<10%), More Tucker (Increase in Plums, Emu) | Less Wildfire (<10%), More Tucker (Increase in Plums, Emu) |
| Loss of old people/knowledge | More old people happy that knowledge is being recorded | More old people happy that knowledge is being recorded | More old people happy that knowledge is being recorded |
| Not enough native plants and animals | Not less than 2014 numbers of key plants and animals | Increase in all indicator species from 2014 numbers | |
| Weeds | Weeds no more than in 2014 | Weeds mostly at 2014 levels but 2 key areas much less | Weeds mostly at 2014 levels but 10 key areas much less |

Target Indicators: Rivers & Wetlands



Where to Now?

- We need to finish the last of our Landowner consultations and incorporate any new information to our current work.
- We have enough information to draft our Djelk Healthy Country Plan Strategic Document. We want to have a draft completed before the end of 2014.
- We will need to present the draft plan to Landowners for comment.
- We will need to come together again early in 2015 to turn the strategic plan into operational documents that are easy for us to use.
- We want to create a Work Plan and Monitoring Plan that will be easy for us to use every day and that will keep us on track towards achieving the goals we have set for Djelk.





Acknowledgements

We are very grateful for the assistance of our many friends who support, fund and contribute to our work.

In particular, we thank:

- Australian Government - Working on Country, Indigenous Protected Areas, Australian Customs and Border Protection Service, Department of Agriculture (AQIS), Aboriginals Benefit Account.
- Northern Territory Government – Department of Primary Industry and Fisheries (NT Fisheries), Department of Land Resource Management (Flora & Fauna Division, Marine and Coastal Biodiversity Unit, Bushfires NT, Weed Management Branch, Parks and Wildlife Commission of the NT), Northern Territory Police, West Arnhem Shire Council.
- Territory NRM, Charles Darwin University, Darwin Centre for Bushfires Research, Karrkad-Kanjdi Trust, The Nature Conservancy, PEW Charitable Trusts, North Australian Indigenous Land and Sea Management Alliance, Centre for Aboriginal Economic Policy Research, Northern Land Council, Warddeken Land Management Limited, Adjumarllarl Rangers, Mardbalk Rangers, Garngi Rangers, Wanga-Djakamirr Rangers, Gurruwilling Rangers, Mimal Rangers, West Arnhem Land Fire Abatement (WALFA) Ltd, Central Arnhem Land Fire Abatement (CALFA), Ghost Nets Australia, Maningrida College/School, The University of Melbourne, Learning on Country Program.
- Alys Stevens, Stuart Cowell and Jennifer Ansell for assisting with the planning process.
- This report was prepared for the Djelk Rangers by Jennifer Ansell.



© Djelk Rangers 2014
Bawinanga Aboriginal Corporation
PMB 102 via Winnellie NT 0821
djelk @bawinanga.com
Phone: 08 8979 5803

