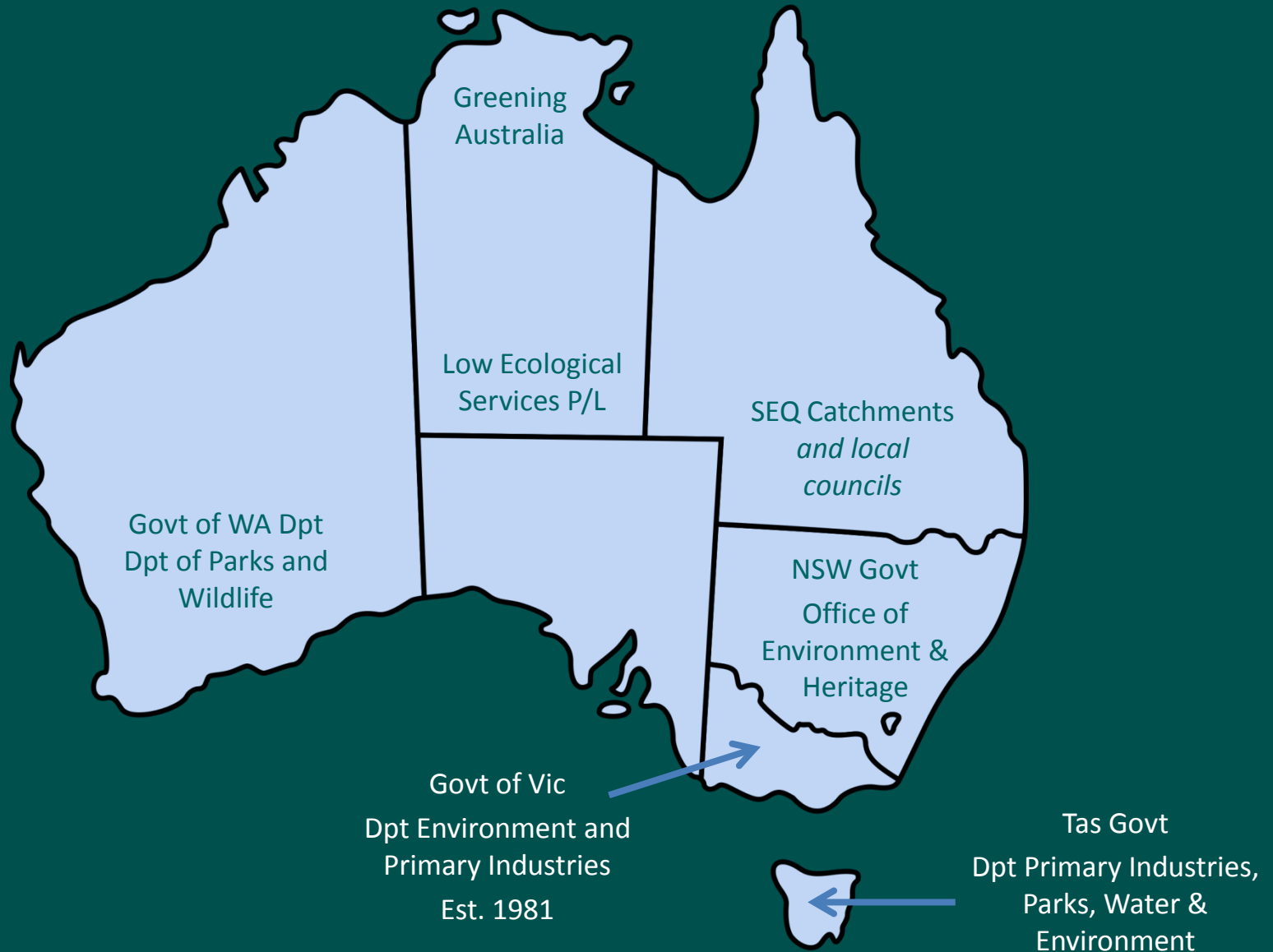




*Celebrating 15 years of Wildlife Habitat  
Preservation, Enhancement and Restoration*

*Caragh B Heenan, Bill A Low*

# Land for Wildlife at a National Scale



# History of the LFW Program

1 Year

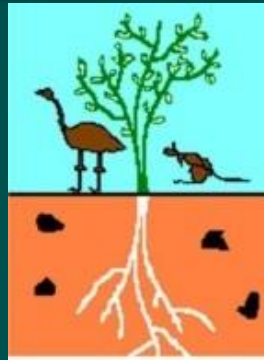
Alice Springs  
Town Council



Federal Government Grant  
'Environment'

2 Years

Low Ecological  
Services  
*as Contractor*



12 Years

Low Ecological  
Services  
*as Host*

*Parks and Wildlife NT  
Territory Natural Resource  
Management  
Alice Springs Town Council  
PowerWater  
Natural Heritage Trust  
Territory Eco-Link  
LandCare  
Caring for Country  
Envirofund*

Proudly sponsored by  
**Northern Territory  
Government**



**National  
Landcare  
Programme**

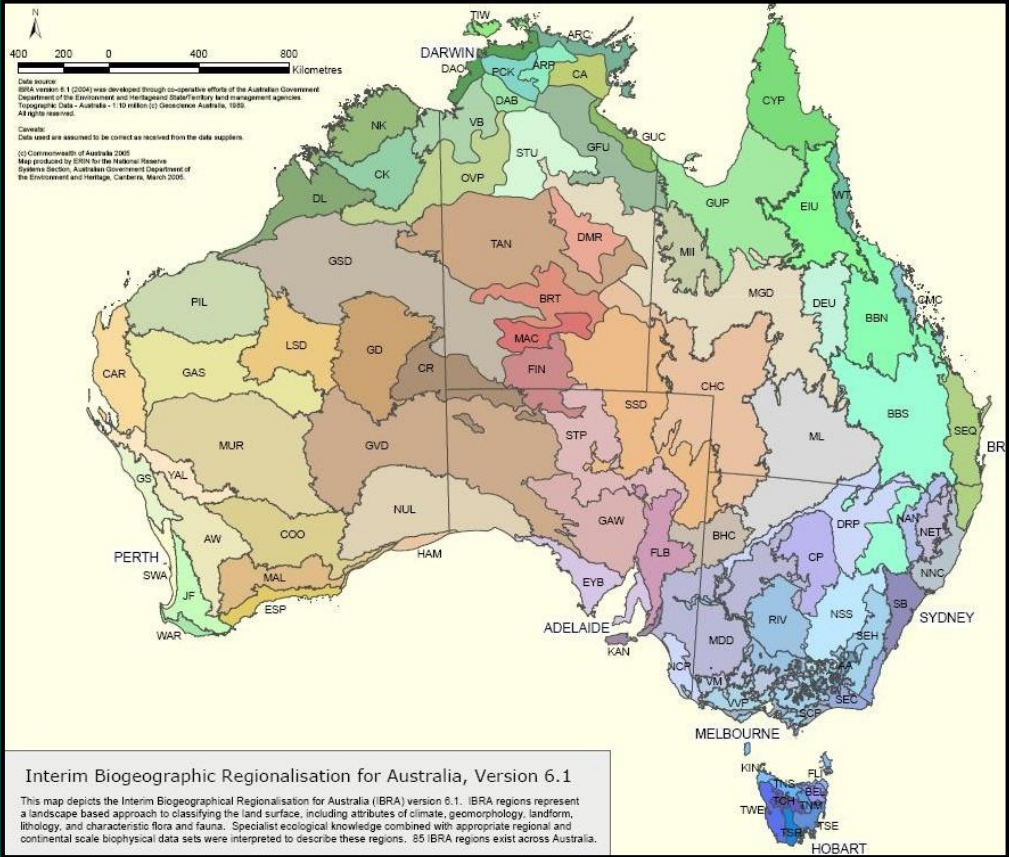


**Territory  
Natural Resource  
Management**

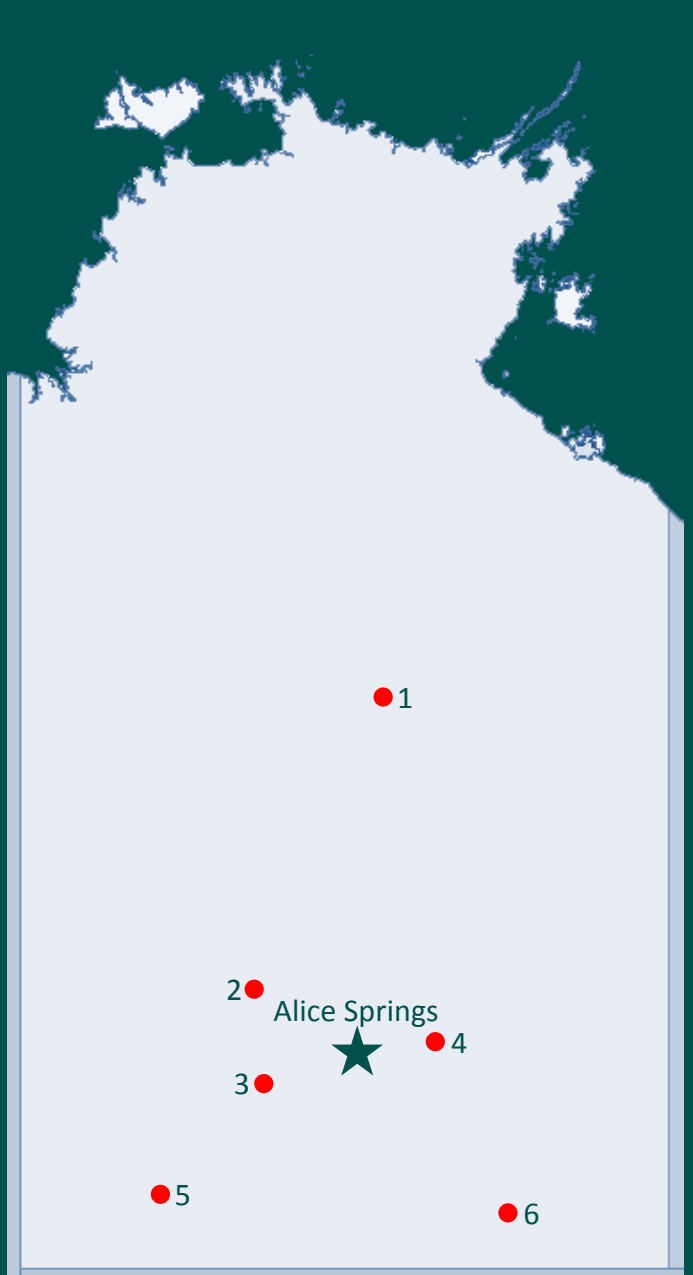


# Networks



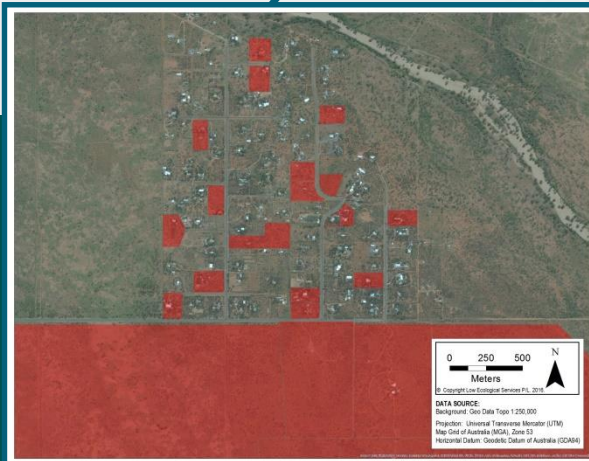
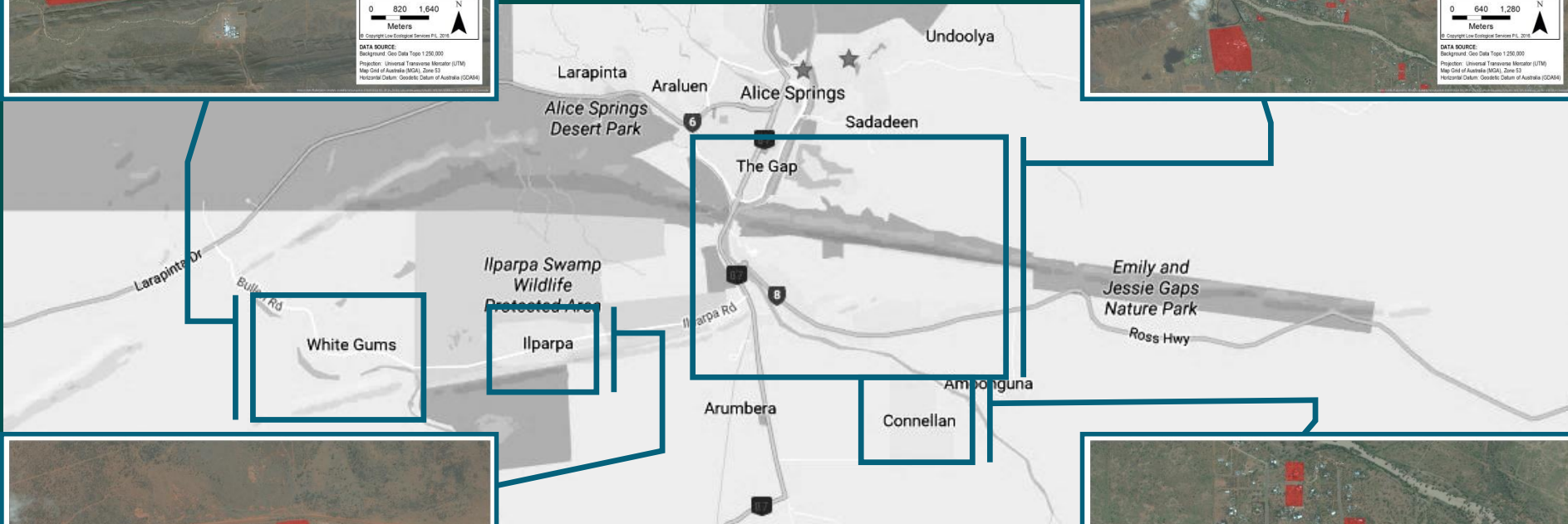
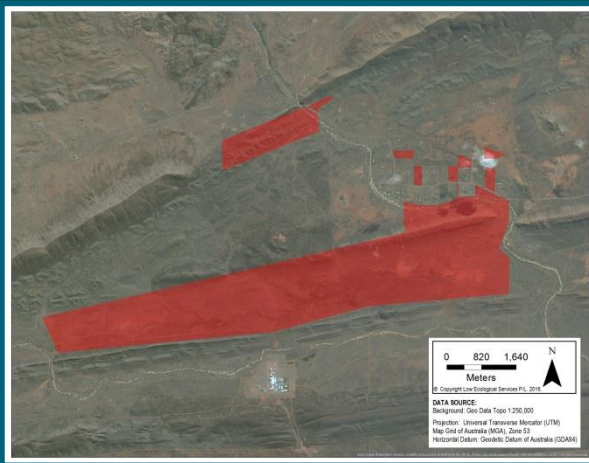
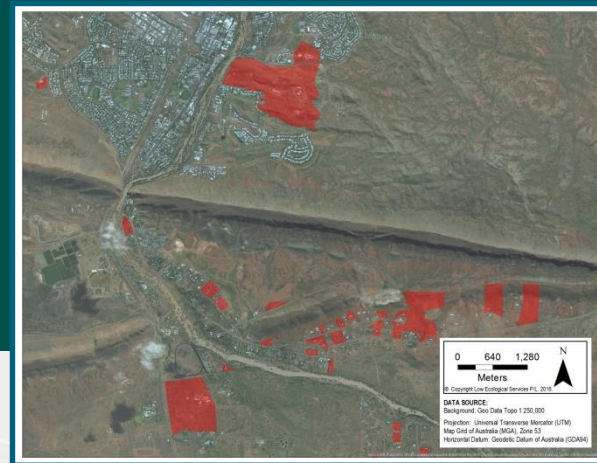


1. Airport & Pistol Club
2. Narwietooma Station
3. Kuprilya Springs
4. Ross River Homestead
5. Yulara / Ayers Rock Resort
6. Old Andado Homestead





# Land for Wildlife Member Properties



**Cumulative Area: 291,656 Ha**  
**Smallest Property: 0.12 Ha**  
**Largest Property: 263,240 Ha**  
**Furthest Reaches: 460 km\***

\*From Alice Springs

# Garden for Wildlife



# Land for Wildlife

152 Total

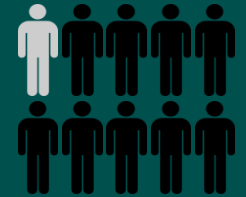
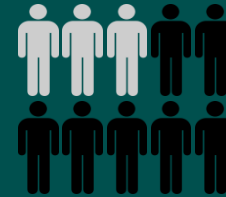
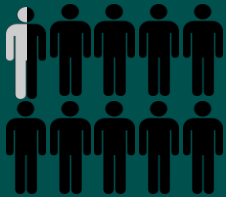
12 (5%)

134 (52%)

103 Total

78 (31%)

25 (10%)



Apartments / Units

Urban Houses

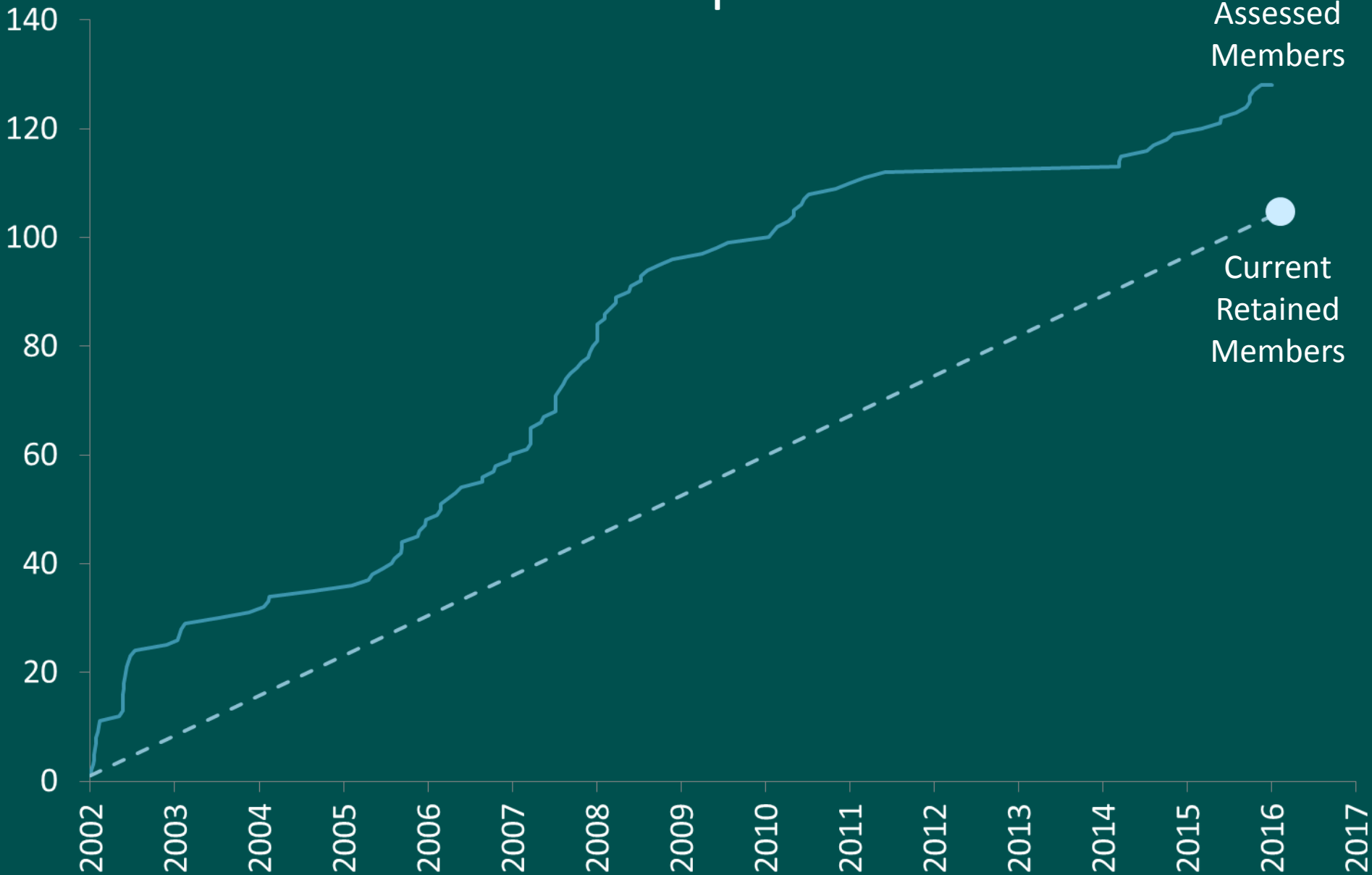
Rural Residential Properties

Stations / Companies

Plus 6 other urban properties, including a park, a community garden, an empty block, an office garden and two schools...

Including multiple botanic gardens, caravan parks, airports, wildlife sanctuaries, stations and schools...

# Membership Growth





# Membership Challenges

## **Transient population**

Members taking the message with them to other regions  
Difficulty maintaining contact with member properties and current owners

*MailChimp as a tool*

*Regular interaction with members*

*Encouraging members to communicate*

---

## **Coordinator changes**

Different levels of engagement, focus, drive and experience  
Information and energy is kept fresh



# What We Do



Conserving habitats on private properties to address species decline through habitat loss

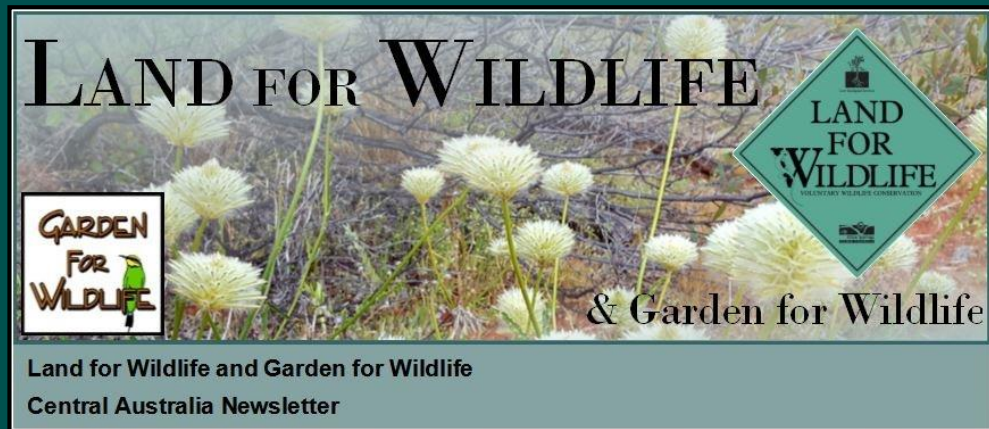
# What We Do

Workshops for members and other local groups



Participation in public events

Monthly newsletters



Land for Wildlife and Garden for Wildlife  
Central Australia Newsletter



# What We Do





# What We Do



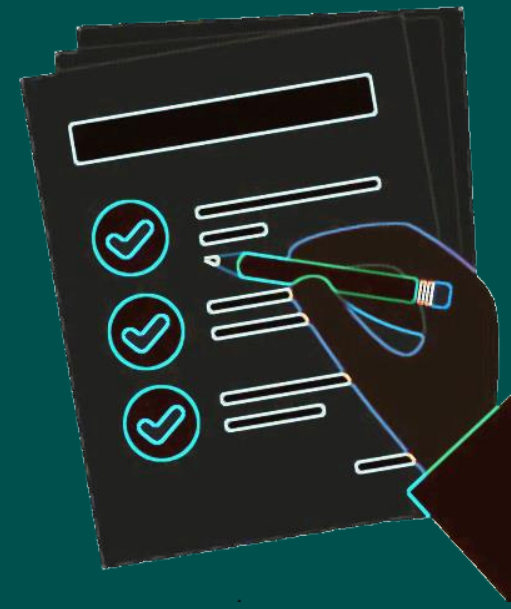
Property assessments

Management advice specific to each property

Ongoing support and access to a network of like-minded individuals



# Assessment Process



1

Member property assessment conducted, including flora identification and highlighting significant natural resource management issues

2

Report developed, including resource kit to assist with property management

3

Member receives sign, resource package and access to ongoing support and resources



# Focus Areas

Retaining and protecting remnant vegetation



Erosion advice and control



Grow local native flora species



Assisting landholders to preserve, enhance and recreate wildlife habitat

Removal or control of weed species



Allow regeneration of habitat through active management practices



Control of feral or pest species



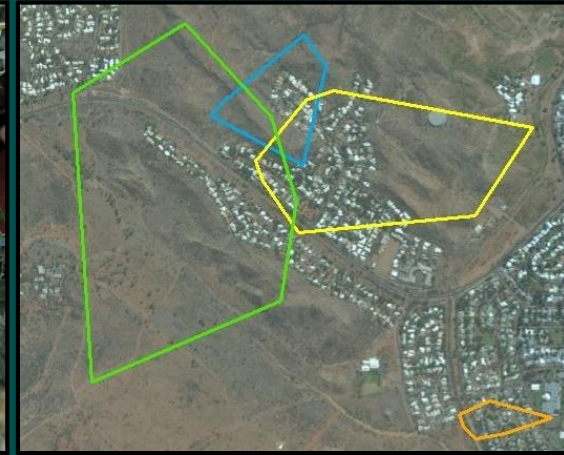


# Domestic Cat Monitoring and Awareness

Engaging domestic cat owners regarding responsible cat ownership  
Impact of domestic cats on local biodiversity and feral cat populations

TNRM Plan: Increase knowledge through monitoring

GPS-tracked domestic cats  
Scat analysis  
Video Surveillance



# Social Media

Land for Wildlife  
Newsletter



432

Subscribers

Land for Wildlife  
Garden for Wildlife



336

Page Likes

@LFW\_Alice

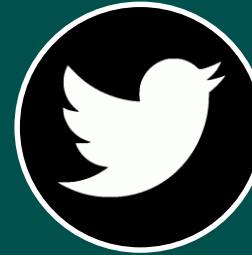


17

Followers

*New in mid-2016*

@LFW\_Alice



417

Followers

Land for Wildlife



1

Subscriber

*New in mid-2016*

Newsletter  
Upcoming  
events

Links to  
newsletters &  
web blogs,  
flora and  
fauna images  
from member  
properties,  
current  
interest  
articles

Images from  
member  
properties of  
flora and  
fauna

Links to  
Newsletters,  
links to web  
blogs

Wildlife  
videos taken  
on member  
properties &  
surrounding  
region

# Awards and Recognitions



Best Urban NRM Group  
TNRM Awards 2016

Urban Landcare Award  
NT Landcare Awards 2009

Toshiba Leading Information  
Community Group Award  
NT Landcare Awards 2011

Merit Award  
NT Landcare Awards 2007

Community Award  
PowerWater Melaleuca Awards  
2010





*Supported by:*

