



CENTRAL LAND COUNCIL

Eyes in the Sky

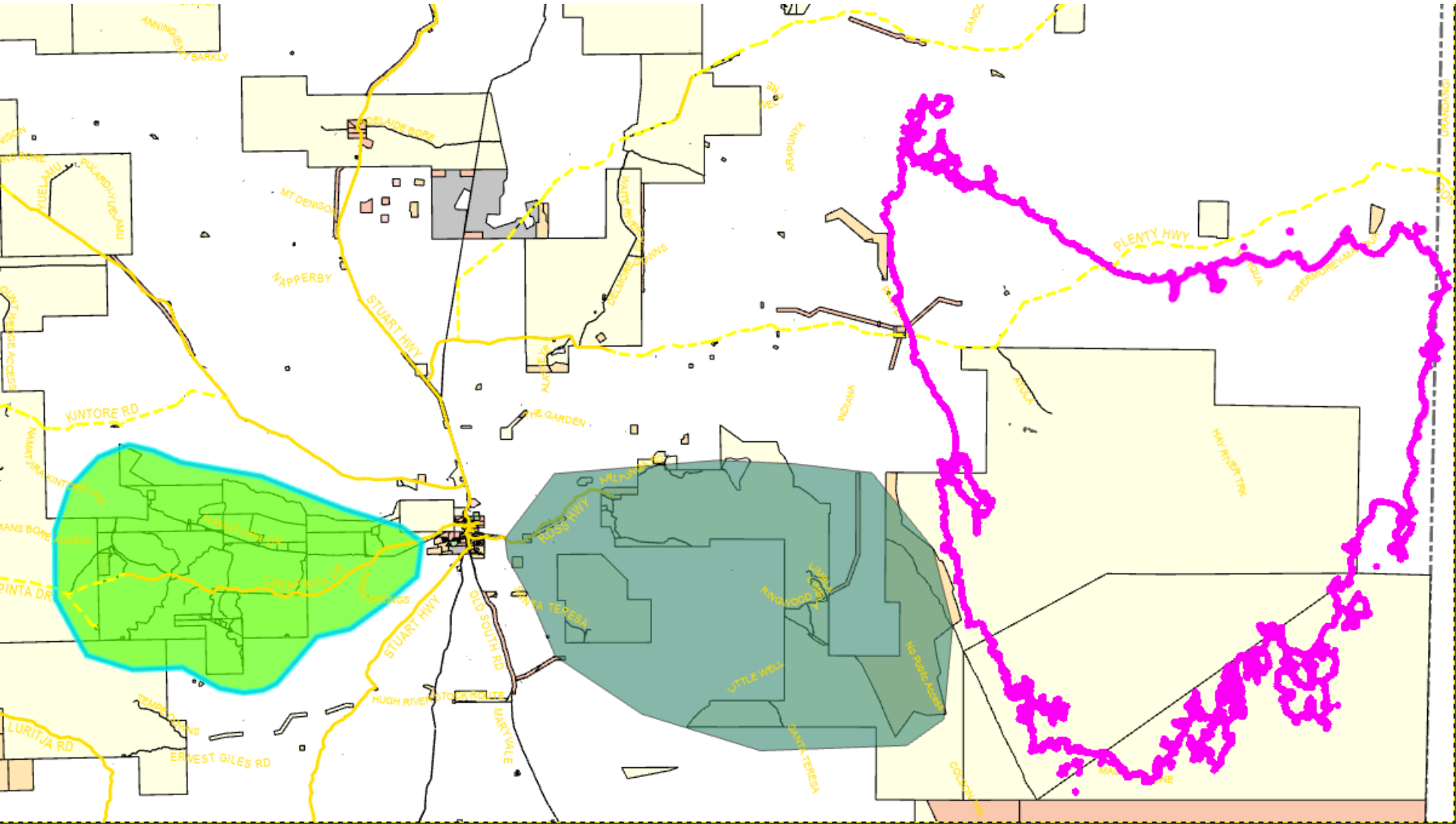
**Tjuwanpa Rangers
And
Ltyentye Apurte Rangers**





Eyes in the Sky

CLC rangers deal with a big area with limited resources





Eyes in the Sky

We're supposed to look after this country for the owners...

That means we need to let them know if the country is healthy and when it has problems so they can decide if anything needs to be done.

40 hours/week 110400 work minutes/year X 6 Rangers 662400 ranger minutes/year X 1.2m ha work area

= Every ranger can spend about 2 minutes/hectare/year.



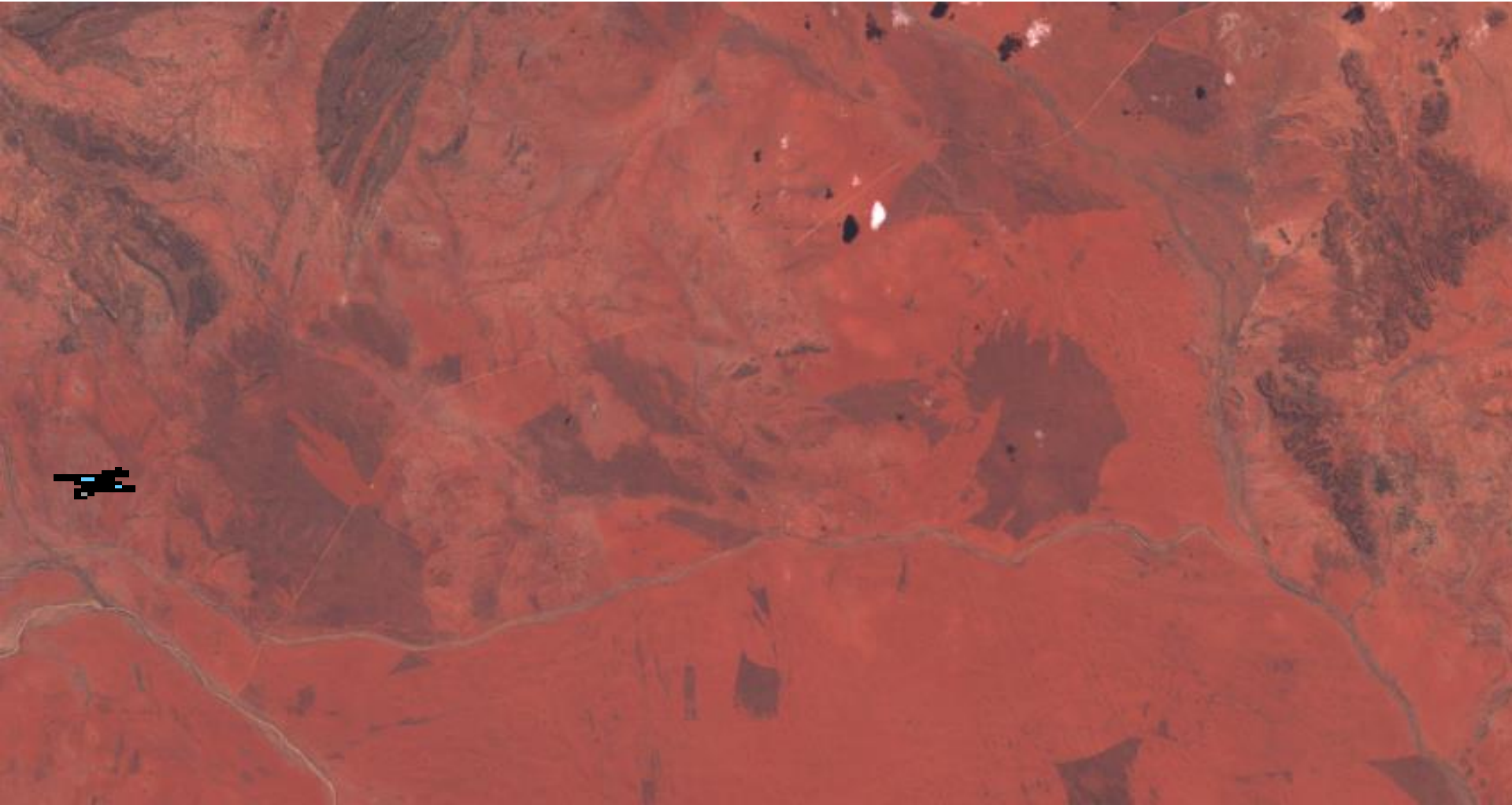


CENTRAL LAND COUNCIL

Eyes in the Sky

We can't get around to looking at all this country...

People can look at really big areas using satellites. They can pick out areas that look different or don't look right: Problem is...

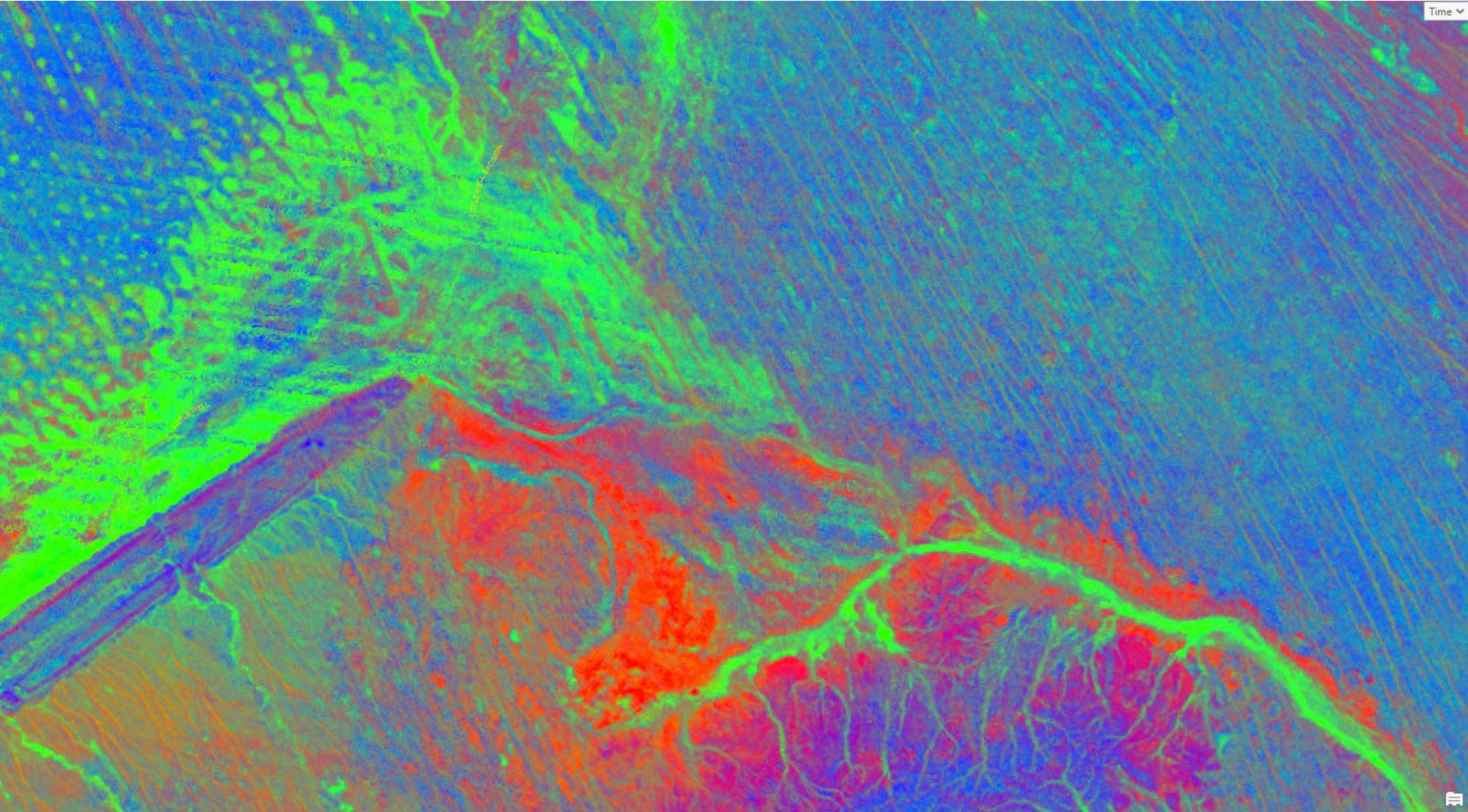




Eyes in the Sky

People can look at really big areas using satellites, but...

Most people don't understand what the satellite stuff is saying.





Eyes in the Sky

People can look at really big areas using satellites, but...

Most people don't understand what the satellite stuff is saying.



2003



2019

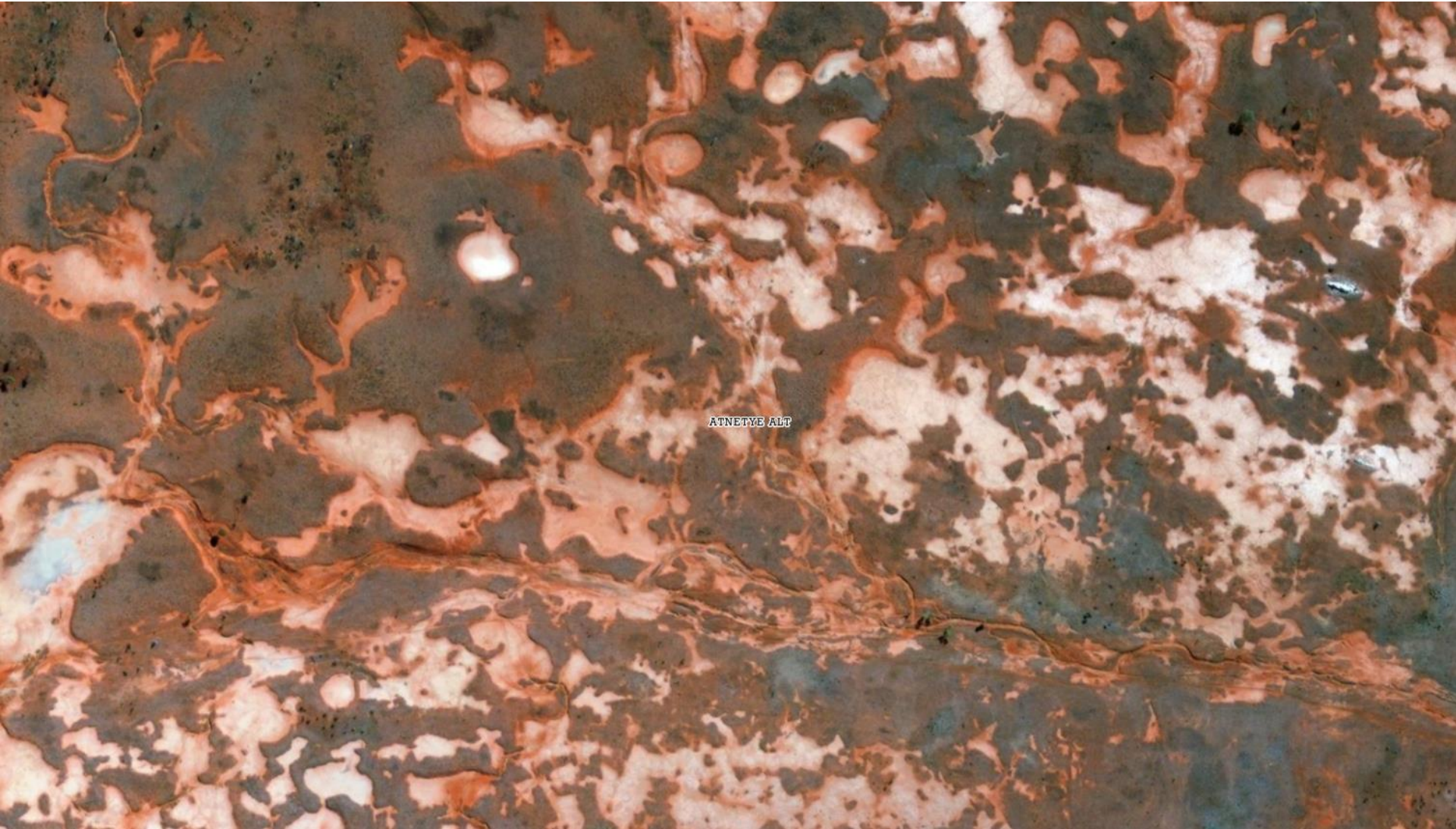


CENTRAL LAND COUNCIL

Eyes in the Sky

People can look at really big areas using satellites, but...

Most people don't understand what the satellite stuff is saying.

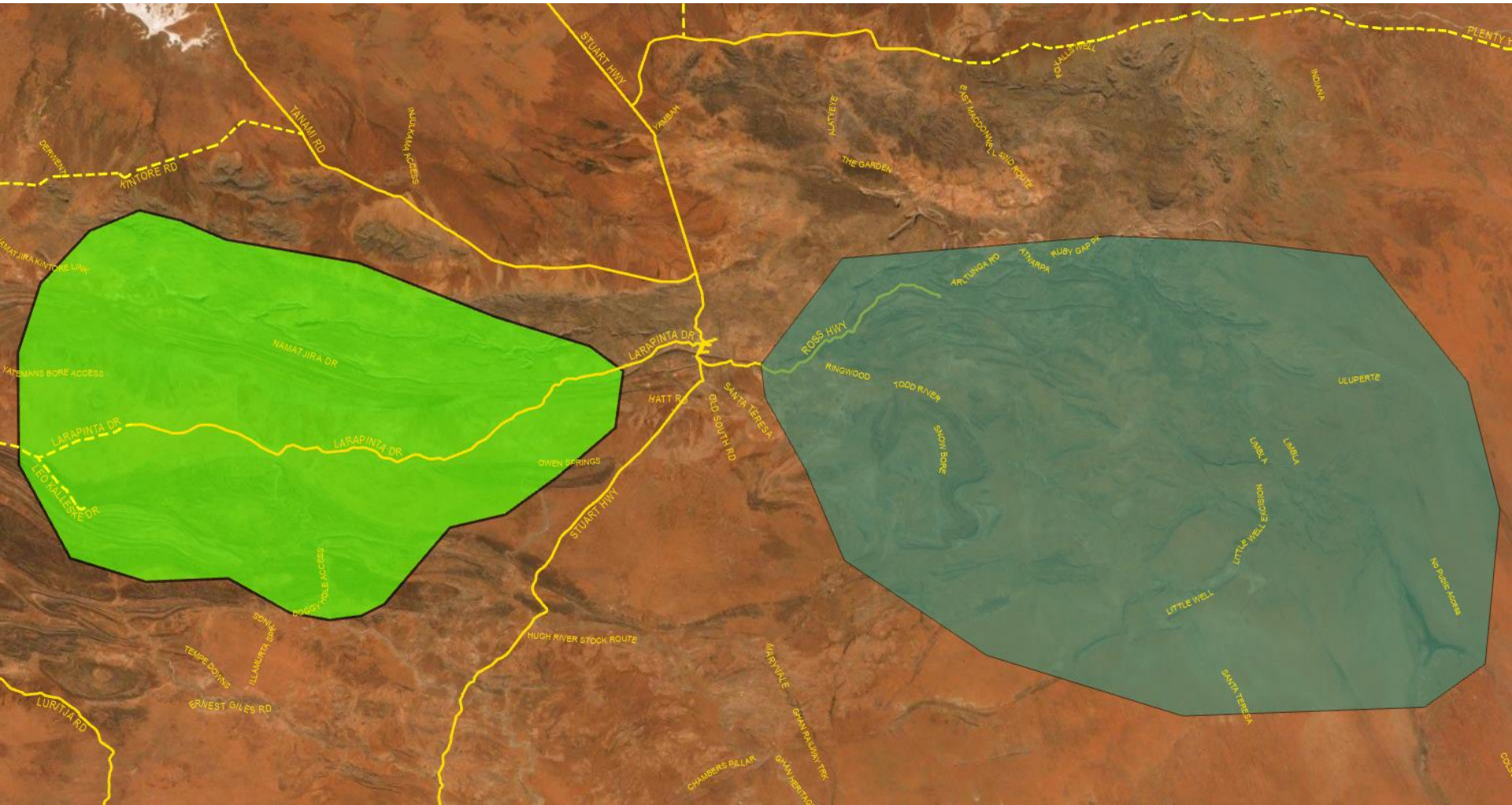




Eyes in the Sky

We can't get around to look at all this country...

What the satellite can tell us is what country looks really sick or really healthy. We can use it to pick out places that can tell the best story. So instead of having of look at all this country.

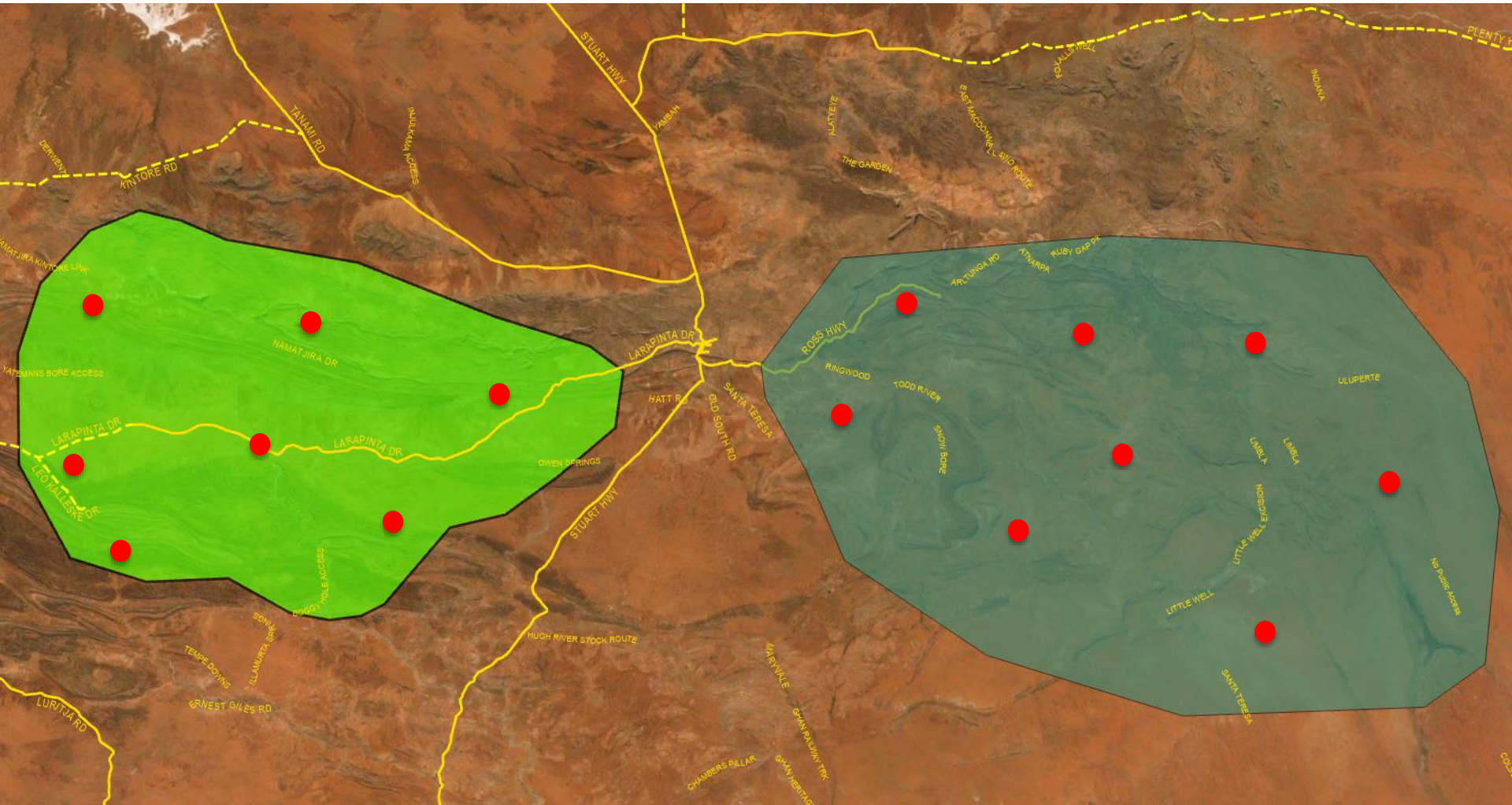




Eyes in the Sky

We can't get around to look at all this country...

We can just look at these places that we know have a story to tell.





CENTRAL LAND COUNCIL

Eyes in the Sky

When we get to these places

We use one of these: a drone





CENTRAL LAND COUNCIL

Eyes in the Sky

When we get to these places

The drone allows us to see a lot of country, a lot faster and easier than if we had to walk or drive.





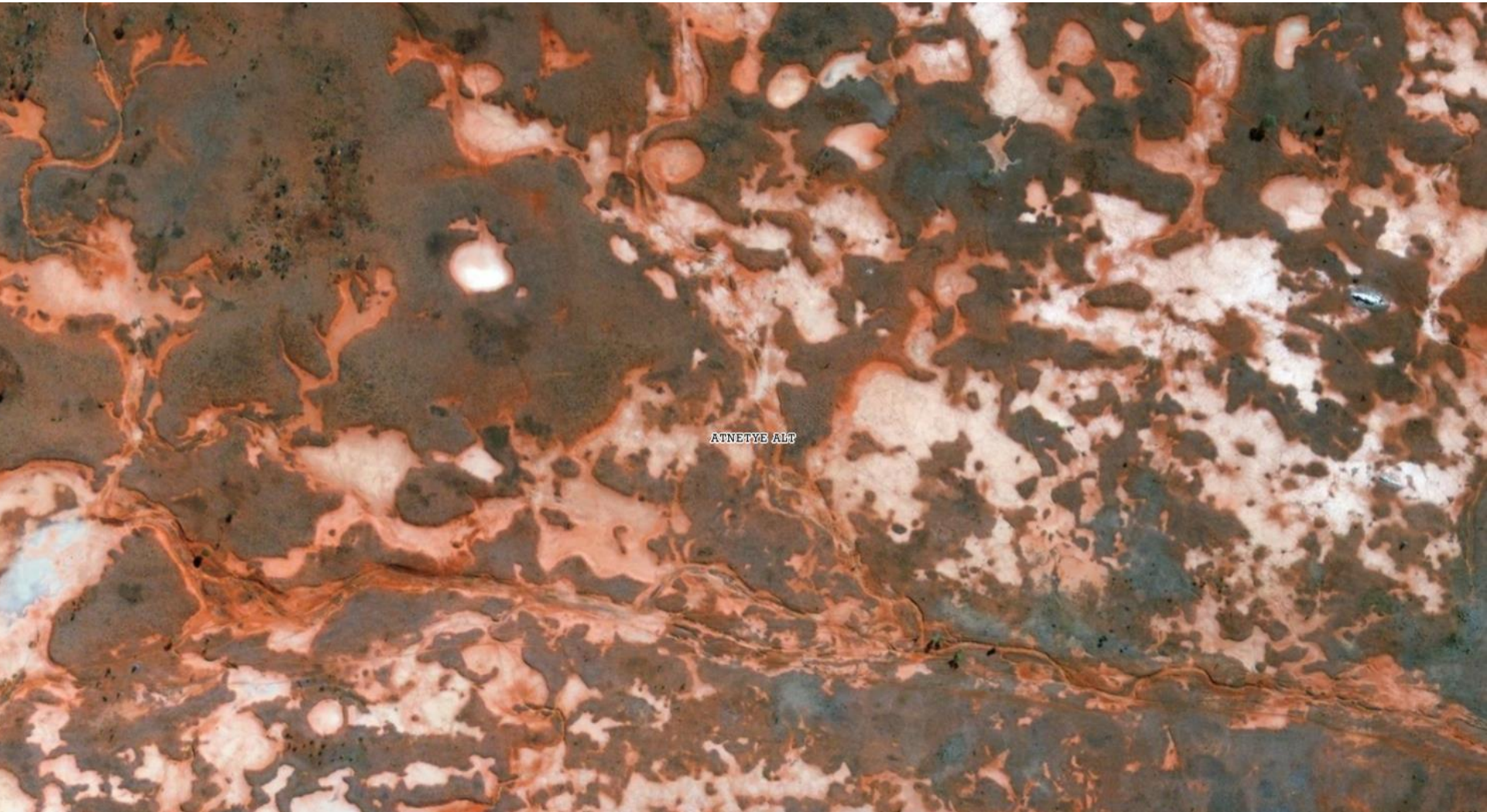
CENTRAL LAND COUNCIL

Eyes in the Sky

The drone

Lets us take photos that make the satellite stuff real.

An owner can be told that that the cattle pads are cutting up country and shown this from the satellite:





CENTRAL LAND COUNCIL

Eyes in the Sky

But this shows what's really happening.



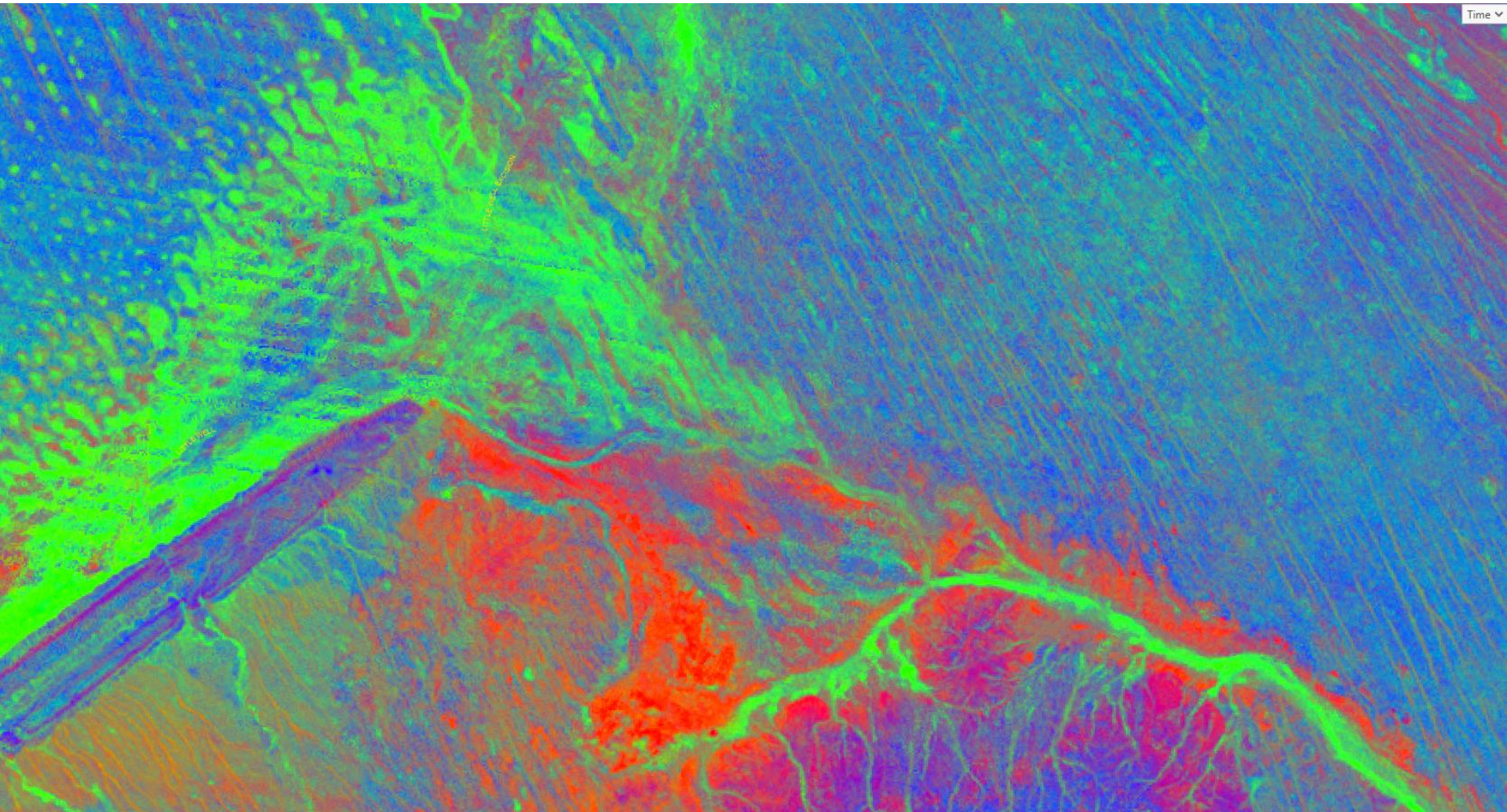


Eyes in the Sky

The drone

Lets us take photos that make the satellite stuff real.

An owner can be told that there's country that just isn't growing grass, and shown this from the satellite:





CENTRAL LAND COUNCIL

Eyes in the Sky

But this shows them what's really happening





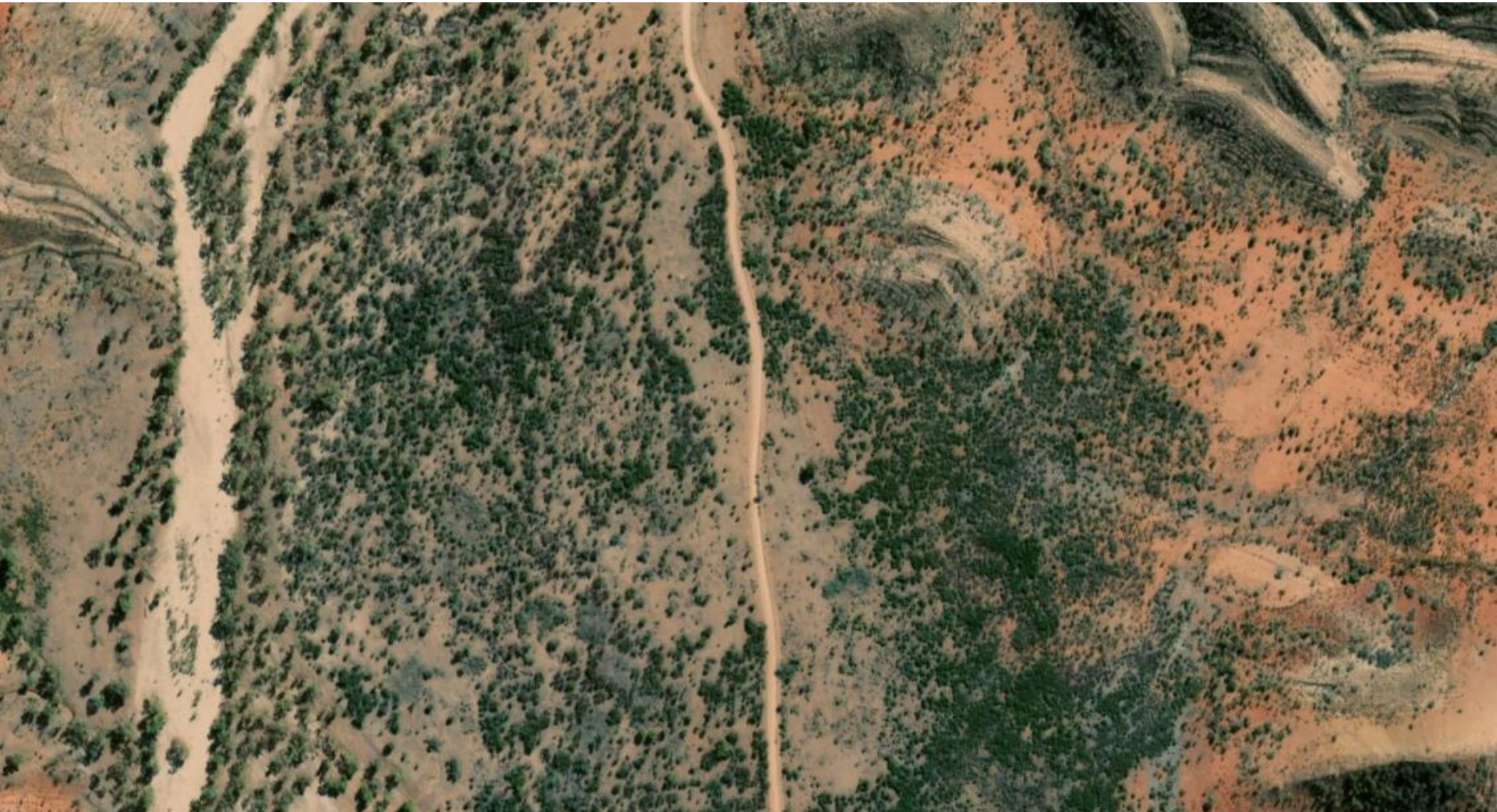
CENTRAL LAND COUNCIL

Eyes in the Sky

The drone

Lets us take photos that make the satellite stuff real.

An owner can be told that there's a weed problem over big bits of country and shown this:





CENTRAL LAND COUNCIL

But this makes it real

Eyes in the Sky





Eyes in the Sky

The drone

Lets us take photos that make the satellite stuff real.

An owner can be told that there are places where the cattle pads are making the soil wash away and shown this:





CENTRAL LAND COUNCIL

But this makes it real

Eyes in the Sky





CENTRAL LAND COUNCIL

Eyes in the Sky

The drone

Lets us take photos that make the satellite stuff real.

An owner can be told that the area along the river is covered in horse pads and show them this:





CENTRAL LAND COUNCIL

Eyes in the Sky

Background info

But this makes it real





CENTRAL LAND COUNCIL

Eyes in the Sky

The drone

Lets us show owners the same stuff as the satellite, in a way everyone can understand.





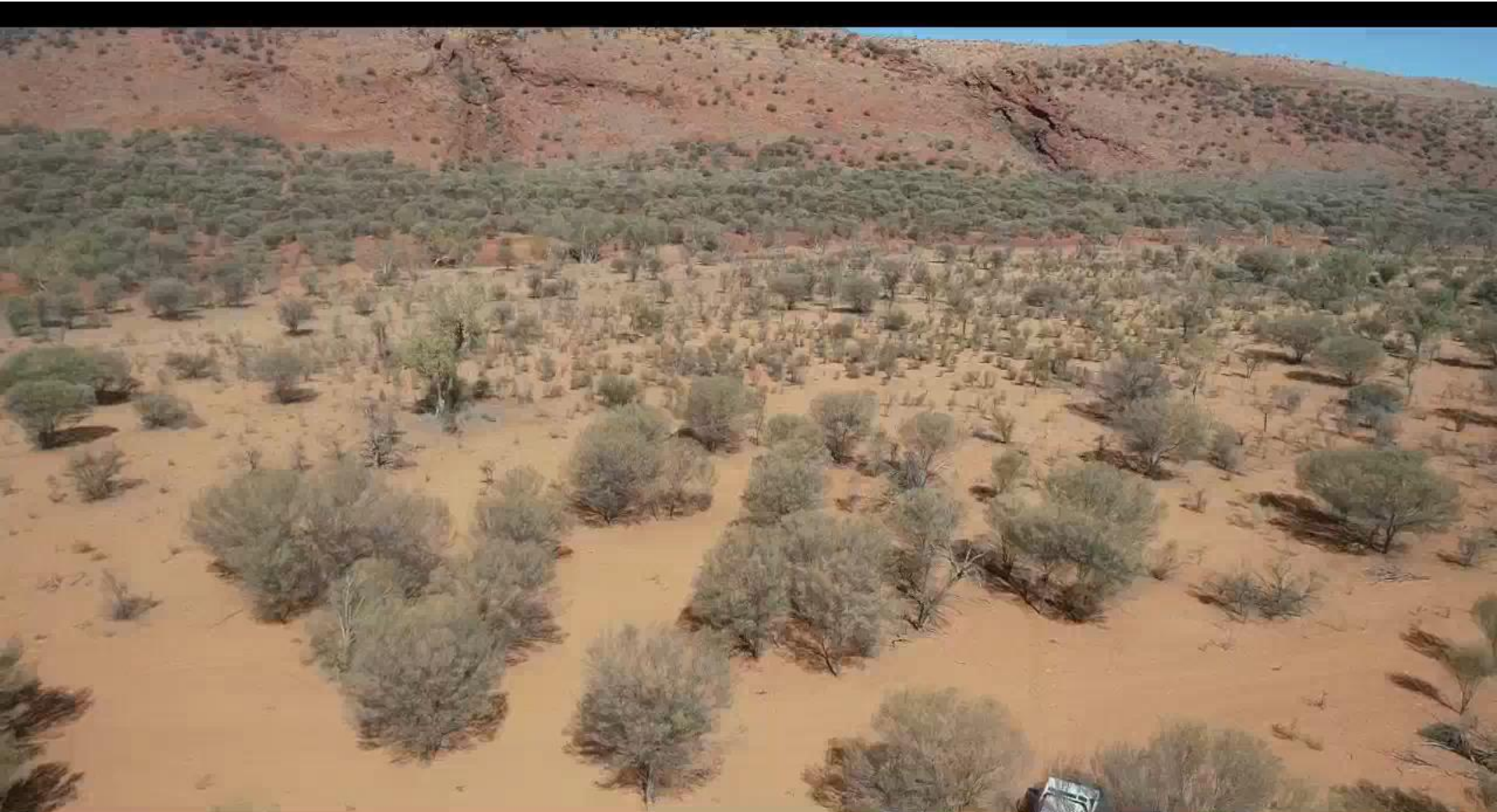
CENTRAL LAND COUNCIL

Eyes in the Sky

How we use this.

When we have meeting we show Traditional Owners this stuff.

That way they can see their country and get a feel for what's happening





CENTRAL LAND COUNCIL

Eyes in the Sky

How we use this.

A lot of the bad stuff we see is caused by cattle and horses and donkeys. When we can show people how these are hurting the country, they understand why we need to get rid of these animals.





CENTRAL LAND COUNCIL

Eyes in the Sky

How we use this.

Helps owners decide what work the rangers should be doing.

Like what places need fire.





CENTRAL LAND COUNCIL

Eyes in the Sky

How we use this.

This is useful for owners to decide what work the rangers should be doing.

Where we need to be fencing out animals.





CENTRAL LAND COUNCIL

Eyes in the Sky

Background info

We use this.

We also use this stuff to show people the effect cattle are having on country, so they can decide how many cattle to have.





CENTRAL LAND COUNCIL

Eyes in the Sky

The drone lets us do our job better.

Look at more country faster

Helps them make decisions on how many animals to have on country

The owners can see what we've seen.

Helps to see where rangers need to be doing work.





Eyes in the Sky

In future

We need to do this more in good country. It's not all bad news out there and people should be able to see the good country

