

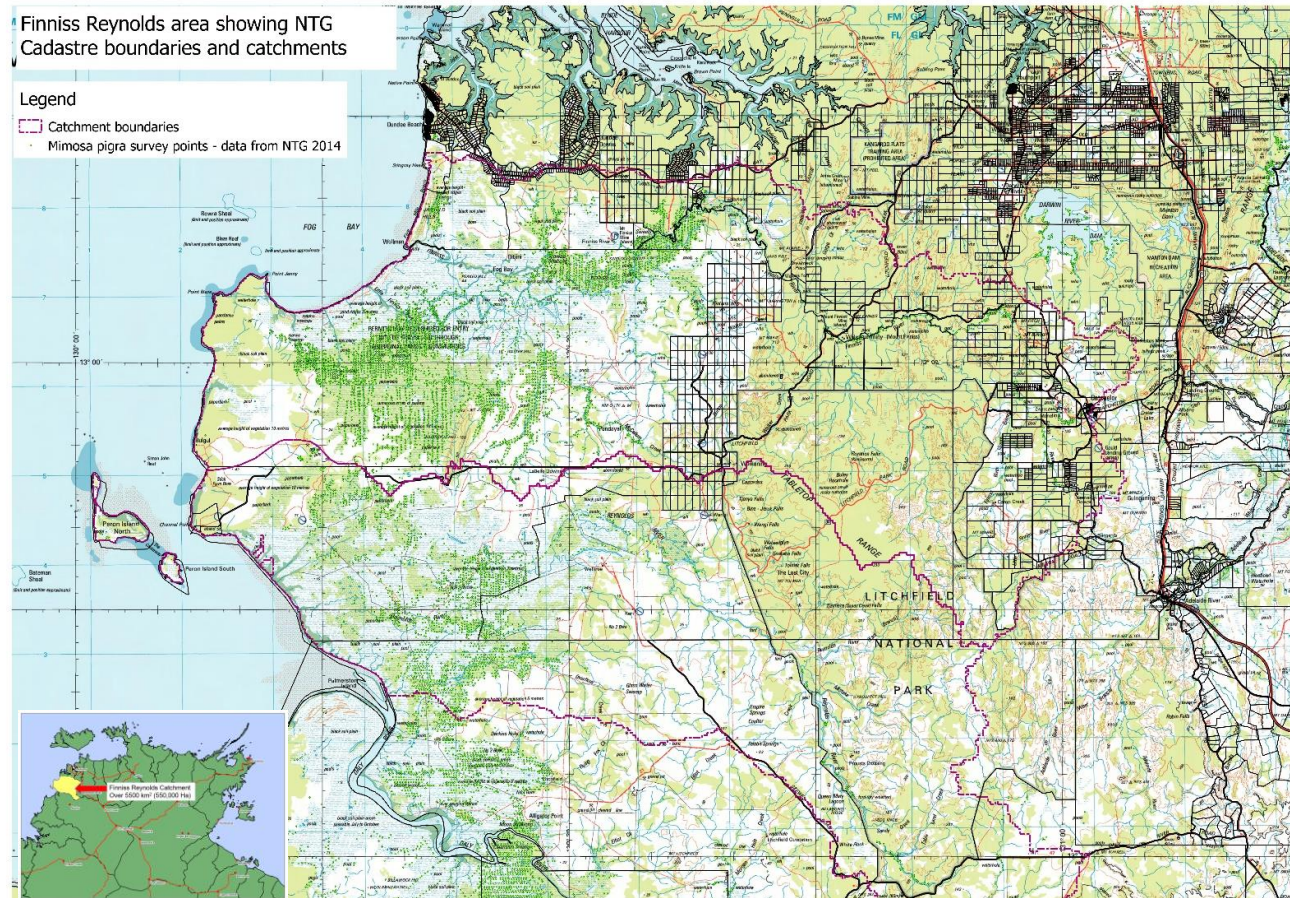
THE FINNISS REYNOLDS CATCHMENT GROUP PROJECT — LAND MANAGERS COLLABORATING AT LANDSCAPE SCALE TO MANAGE INVASIVE SPECIES

Susanne Casanova & Anthony Kerr
Territory Natural Resource Management
susanne.casanova@territorynrm.org.au

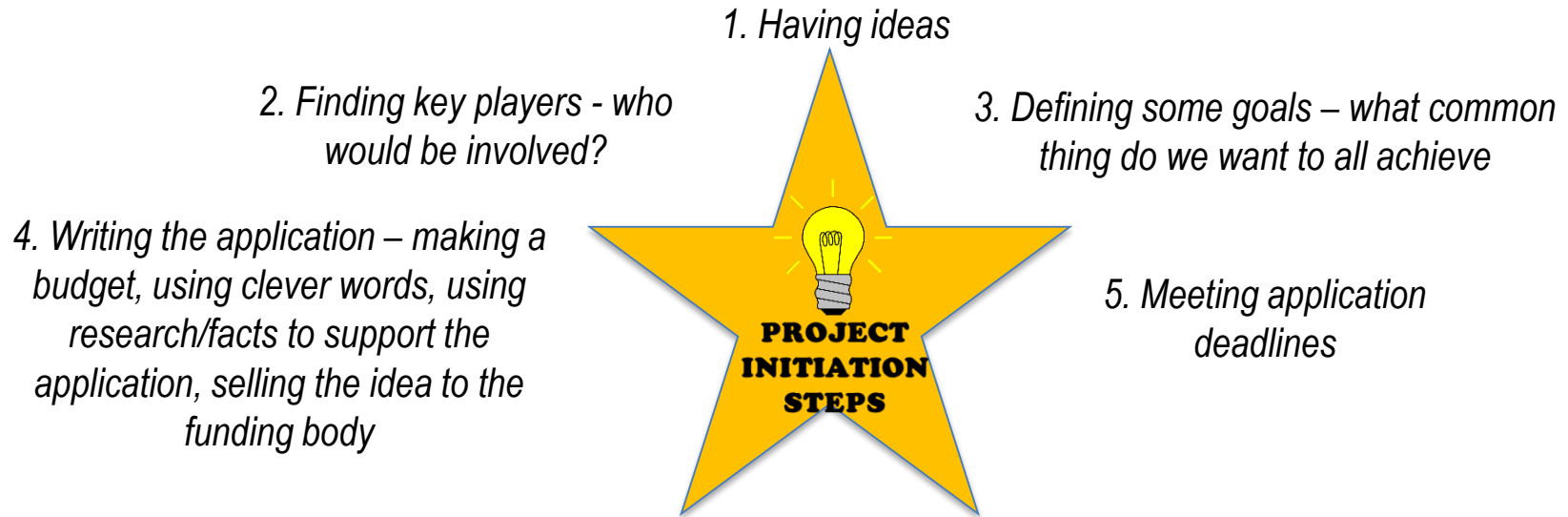


PROJECT AREA

- **5,500 km² nested within Western Top End region**
- **Finniss & Reynolds catchments**
- **Indigenous land, pastoral properties, national parks, crown land, weekender blocks, and rural residential blocks**



PROJECT INITIATION



- **RMWAH project application 2011 (Labelle & Welltree pastoral area), inherited by TNRM in 2013**
- **Biodiversity Fund Round One (Australian Government, 2011)**
- **Biodiversity focus, 5 years 2012-2017**
- **10 x Six-month ‘stages’, reporting 2 x year to Australian Government**

PROJECT GOALS

- **Protect biodiversity and other assets**
- **Get people working together at catchment scale**
- **Set up catchment group/organisation**
- **Make a weed catchment management plan**
- **Do strategic management of *Mimosa pigra* and feral pigs**
- **Reduce infestation size of *M. pigra***



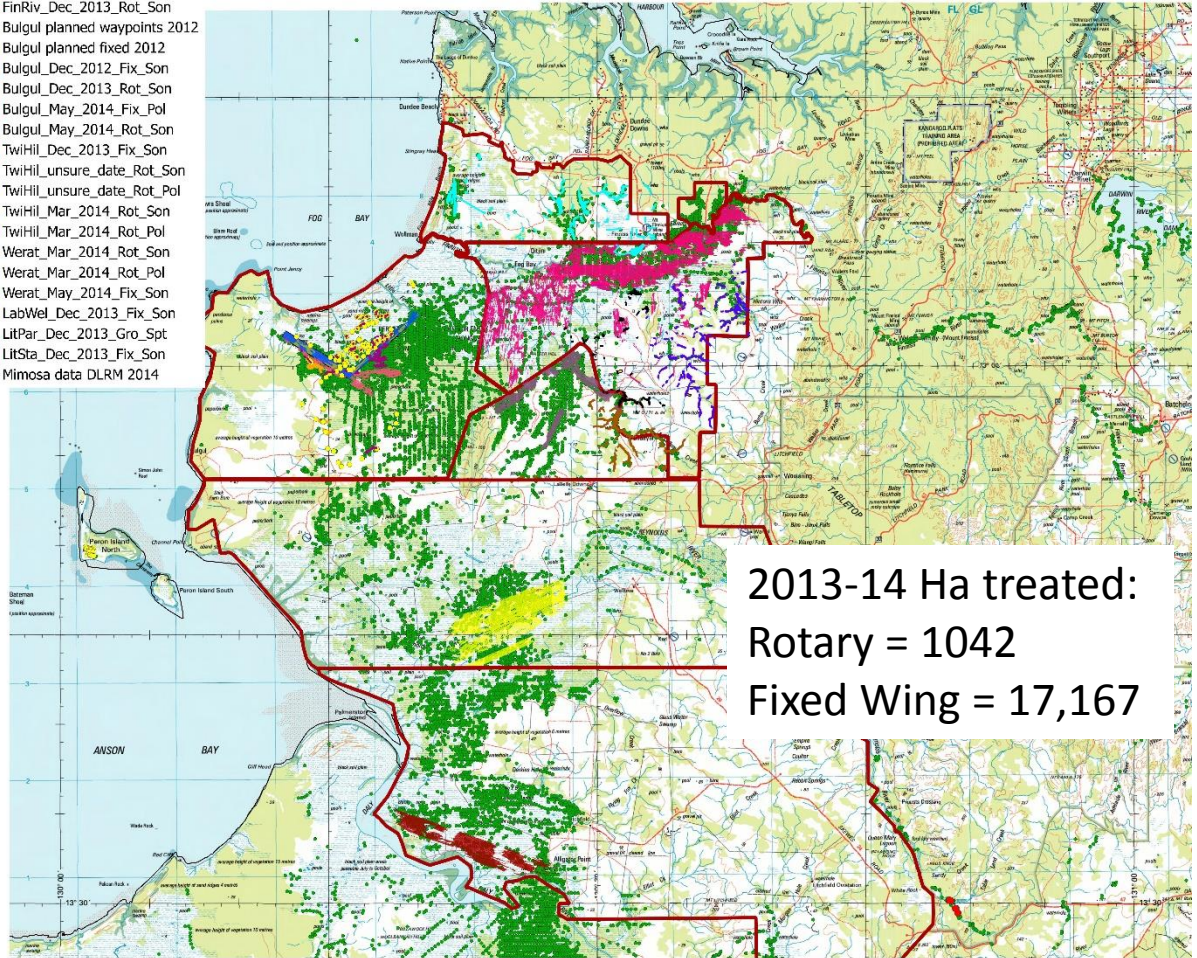
AERIAL SPRAY OF MIMOSA PIGRA

- Fixed wing and rotary contractors familiar with catchment
- Reimbursement of approx. 50% aerial costs
- Value of on-ground treatment used to offset aerial expenses
- Treatment areas approved by Technical Advisory Group

Legend

- FinRiv_Dec_2013_Rot_Son
- Bulgul planned waypoints 2012
- Bulgul planned fixed 2012
- Bulgul_Dec_2012_Fix_Son
- Bulgul_Dec_2013_Rot_Son
- Bulgul_May_2014_Fix_Pol
- Bulgul_May_2014_Rot_Son
- Twihil_Dec_2013_Fix_Son
- Twihil_unsure_date_Rot_Son
- Twihil_unsure_date_Rot_Pol
- Twihil_Mar_2014_Rot_Son
- Werat_Mar_2014_Rot_Pol
- Werat_Mar_2014_Rot_Son
- Werat_Mar_2014_Fix_Son
- Werat_May_2014_Fix_Son
- LabWel_Dec_2013_Fix_Son
- LitPar_Dec_2013_Gro_Spt
- LitSta_Dec_2013_Fix_Son
- Mimosa data DLRM 2014

FRCG mimosa spray 2013-14



OTHER MILESTONE ACTIVITIES

- Feral pig management
- On-ground *M. pigra* treatment
- Biodiversity monitoring
- Vegetation mapping
- Catchment Management Plan
- Property plans
- *M. pigra* catchment survey
- Technical Advisory Group establishment



WEED PLAN
A weed planing guide for 1st and 2nd properties

Why plan?

Plan your weed management strategy to prevent weed infestation and control any weeds that are already present. A weed plan is a document that describes the types of weeds on your property, how they are spreading, and what you can do to control them. It also provides a checklist of actions to take to prevent weed infestation and control any weeds that are already present.

Photo points:

- Take photos of weeds in your property.
- Take photos of the landscape and surrounding areas.
- Take photos of any structures or infrastructure on your property.
- Take photos of any water bodies or wetlands on your property.
- Take photos of any roads or tracks on your property.
- Take photos of any fences or boundaries on your property.
- Take photos of any other features on your property.

Weed Management Team:

- Identify the weeds in your property.
- Identify the areas where weeds are spreading.
- Identify the actions you can take to control weeds.
- Identify the resources you need to control weeds.
- Identify the people who can help you control weeds.
- Identify the time you need to control weeds.
- Identify the cost of controlling weeds.
- Identify the risks of not controlling weeds.
- Identify the benefits of controlling weeds.
- Identify the monitoring and evaluation actions you can take.
- Identify the review and update actions you can take.



Mimosa pigra

What's the problem?

Mimosa pigra is a highly invasive and aggressive weed species that has become a major pest in many parts of the world. It is a large, bushy shrub that can grow up to 10 meters tall. It has a high reproductive rate and can spread rapidly, covering large areas of land. It is a significant threat to biodiversity and agriculture, and its control is a major challenge for land managers.

Control of *Mimosa pigra* in Australia:

Mimosa pigra was first introduced to Australia in the 1800s as a decorative plant. It quickly became a pest and was declared a weed. The Australian Government has implemented a range of control measures, including chemical, biological, and manual control. The National *Mimosa pigra* Strategy 2015-2025 provides a framework for the national response to this weed.

Where is it a problem?

Mimosa pigra is a problem in many parts of Australia, particularly in the eastern and southern coastal regions. It is also a problem in other parts of the world, including the United States, Europe, and Asia.

INTERESTING FACTS ABOUT MIMOSA

- Mimosa pigra* is a highly invasive and aggressive weed species.
- It has a high reproductive rate and can spread rapidly.
- It is a significant threat to biodiversity and agriculture.
- Its control is a major challenge for land managers.
- It was first introduced to Australia in the 1800s as a decorative plant.
- It quickly became a pest and was declared a weed.
- The Australian Government has implemented a range of control measures.
- The National *Mimosa pigra* Strategy 2015-2025 provides a framework for the national response to this weed.

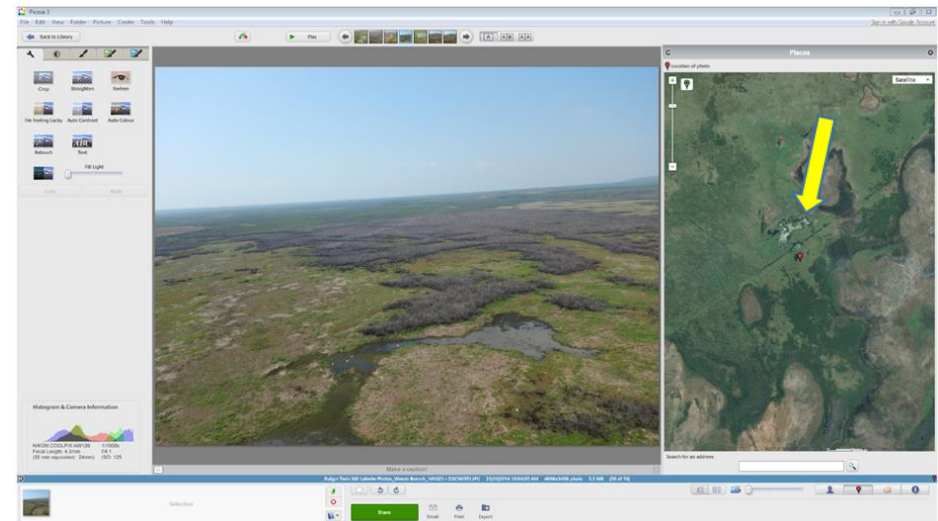


SECTION 9 - PROPERTY WEED MANAGEMENT PLAN May 2014 – May 2016

WEED MANAGEMENT PLAN - High priority species			
Species	Location (refer map at Attachment A)	Objectives (in lifetime of management plan) and Rationale	Method and Rationale
Mimosa	Primary infestations:	1. Eradication of small breakout areas and prevention of new growth in cleared sections of Piggy Wiggy.	July-November Priority 1 - Trunk application – Starane 180mL/100L with diesel; Glyphosate 1:1 water. • Rationale: These areas are accessible from the ground, isolated plants not cost effective for aerial spraying.
		• Rationale: Piggy Wiggy Swamp has been the primary focus of treatment since the early 1990s. Attachment B shows the extent to which mimosa has been cleared from the swamp. Follow-up treatment is essential for final eradication.	
	Secondary infestations:	2. Eradication in southern tip of Piggy Wiggy.	September-October Priority 1 - Folar spray – Starane 180mL/100L with wetting agent 500mL/100L. Priority 3 4, 5 - Ground application after first rain – Grasslan. Priority 4.5 - Physical removal by tractor/front-end loader. • Rationale: Limited funds dictate that ground-work be done wherever mimosa is accessible annually. Priority 3 area is somewhat accessible from the ground.
		• Southern tip of Piggy Wiggy Swamp • Isolated stand to west of southern end of Piggy Wiggy Swamp.	3. Prevent regrowth in burnt areas around Hidden Jewel swamp (middle section). • Rationale: This swamp drains into the Finnis River floodplain therefore mimosa infestation can spread off the property. Bio-control has had significant impact in the middle section and a fire in August 2014 has burnt the mimosa in this area. These combined factors make treatment of this area a priority. 4. Eradication of isolated stand to west of southern tip of Piggy Wiggy. • Rationale: As for priority 1. 5. Reduction on western side of Piggy Wiggy. • As for priority 1. 6. Reduction on entire length of western side of Hidden Jewel swamp. • Rationale: Continue efforts to finally eradicate
			November-January Priority 1 - Folar spray – Starane 180mL/100L with wetting agent 500mL/100L.

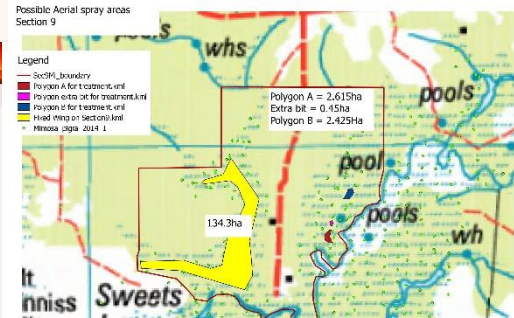
TECHNICAL ADVISORY GROUP – WHAT DO THEY DO?

- Have ideas
- Draw on own experiences
- Provide technical advice
- Share a common interest & make the project collaborative
- Problem solve
- Make decisions about best methods for spending project money and meeting milestones strategically
- Address issues raised by stakeholders
- Support the Project Officer
- Help keep project on track



PROJECT OFFICER – WHAT DO THEY DO?

- Makes sure milestones are met
- Project reporting & record keeping
- Organises meetings & minutes
- Performs extension activities
- Follows budget
- Organises contracts
- Addresses stakeholder needs
- Keeps people focussed
- Tries to stay on good terms with funding body!

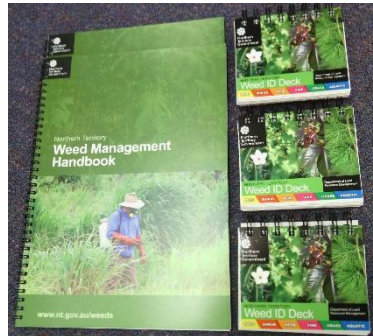


Type of aerial operations	Aerial control expenses		Additional cost / In-kind expenses	
	Item	Quantity	Unit	Value
Fuel	1000	Litres	1000	\$25,000
Oil	100	Litres	100	\$2,500
Trucks	1	Truck	1	\$10,000
Fertiliser	1	Ton	1	\$10,000
Trucks	1	Truck	1	\$10,000
Fertiliser	1	Ton	1	\$10,000



STAKEHOLDER ENGAGEMENT

- Quarterly stakeholder meetings
- Monthly stakeholder newsletters (sent out by email and post)
- Market stalls
- Free chemical for small block holders
- Provision of Weed Management resources
- Consultation where possible



Territory Natural Resource Management

Finniss Reynolds Catchment Group Newsletter - November 2014

Welcome to the November edition. The year is fast drawing to a close and I am about to go on Maternity leave already! Anthony Kerr will be taking over as Project Officer until June 2015. If you have any questions about anything, catch me before I go, or talk to Anthony on 0942 8317 (office), 0441 899 700 (mobile), or email anthony.kerr@territorynm.org.au. It should be business as usual for the project... ☺

Important Dates

Now	Treat removal on ground using basal bark or solar spray techniques. Where there is no risk of fire or damage to native vegetation, Gazette herbicide can be used.
December & January	Aerial spray of catchment areas approved by TAG - fixed wing treatment of larger areas followed by helicopter treatment.
18 February	Next FRCC Stakeholder meeting

Other NRM happenings

12 November	Registration deadline for 2014 NRM conference. Conference includes fieldtrips, presentations, awards dinner & workshops.
18-20 November	2014 NRM conference (including fieldtrips, presentations, workshops) and NT NRM awards, Darwin Convention Centre.
2-3 December	INRM Integrated Natural Resource Management planning workshop for the next 5 years (2015 - 2020) for the Western Top End region - held in Batchelor.

NOTE: Conference field trips & workshops have limited size - spots are full already - register as quickly as you can. Daytime conference events are free, NT NRM awards dinner tickets cost \$70. For conference details and how to register visit: <http://www.territorynm.org.au/2014-conference/>

Project funding
We have had some budget amendments approved finally. Unspent funds from 2013-14 are now available for:

- On-ground removal control in the upper catchments (e.g. labour, chemical, equipment, training). Contact Anthony Kerr to find out how you can use this.
- Biodiversity audit, monitoring and surveillance program - we will look at setting this up in the next six months.
- Additional feral pig control - to be performed in the first half of 2015, including aerial shooting and training for trapping.

How is last season's treatment looking?
Tom Price (DLM Weed Management Branch) and Anthony Kerr (TNRM) went to check out things in the Bulgul/Labelle/Twin Hill area a few weeks ago, along with the various priority

GPO Box 2775 Darwin NT 0801 (08) 8942 8333 www.territorynm.org.au

BEYOND THE PROJECT — WHERE TO?

An end goal of the project is that a FRCG steering committee will continue to support the catchment beyond the funding period, and for this to happen, stakeholders need to be willing to invest in their catchment community.

ACKNOWLEDGEMENTS

- **NTG Department of Land Resource Management**
 - **Weed Management Branch**
 - **Flora & Fauna Division**
- **FRCG stakeholders and Technical Advisory Group members**
- **Aerial Contractors**
 - **Outback Helicopter Airwork**
 - **Aerotech NT**
- **ABS Scrofa (Australia)**
- **Australian Government**
 - **Department of the Environment**
- **Coomalie Community Government Council**
 - **Batchelor Markets**

THANK YOU



**For more information on the Finniss
Reynolds Catchment Group Project**
Anthony.kerr@territorynrm.org.au