

Protecting our natural environment: the approach of the Australian Wildlife Conservancy



Dr John Kanowski

AWC National Science and Conservation Manager

November 2015

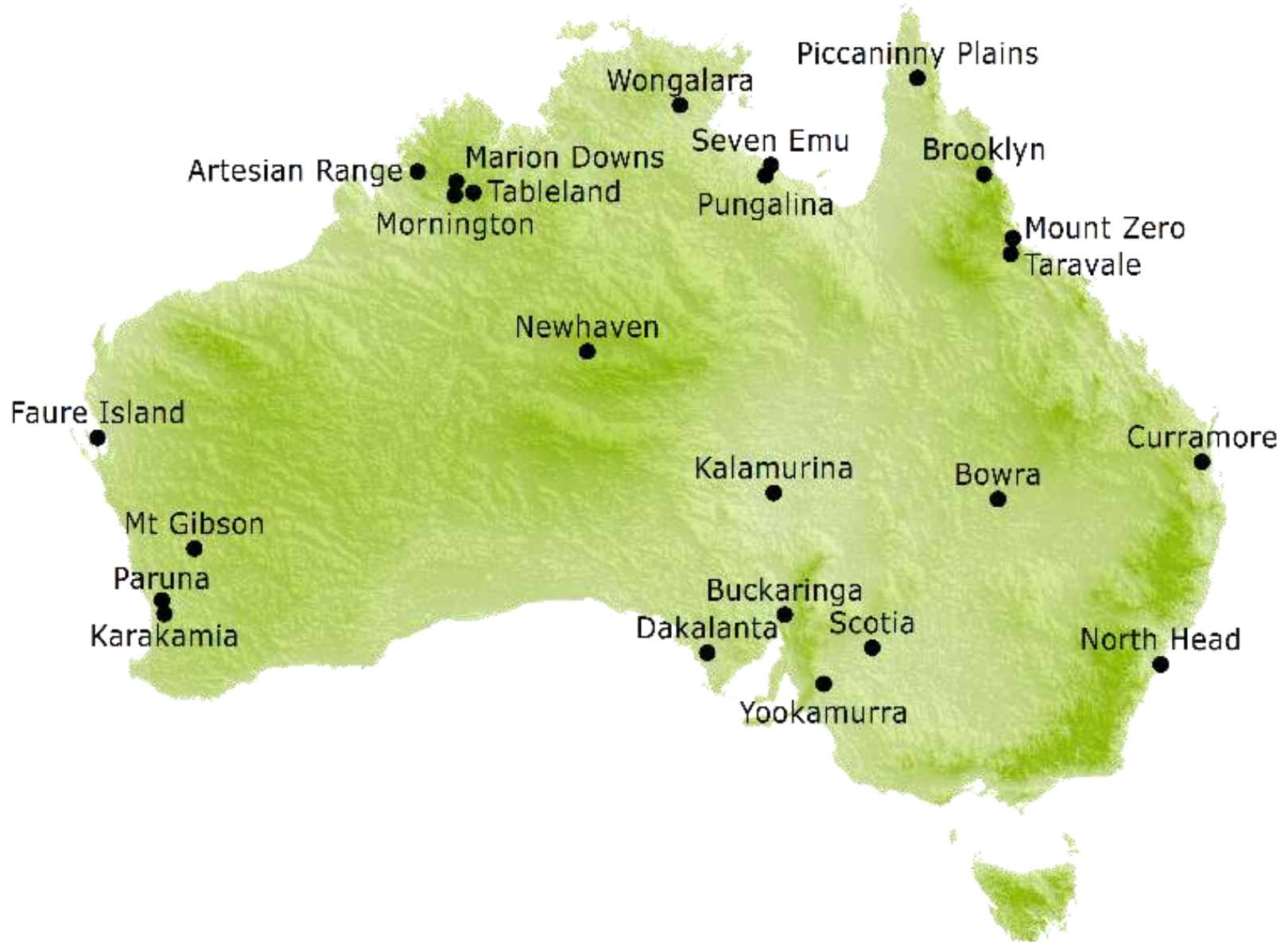
Australian Wildlife Conservancy: our mission

Effective conservation of Australia's wildlife and their habitats



Australian Wildlife Conservancy: our model

- **Establish wildlife sanctuaries**



Australian Wildlife Conservancy: our model

- Establish wildlife sanctuaries
- **Active management of threats**

Feral herbivore control



Fire management



**Feral predator control
(fenced areas & landscape)**



Reintroductions



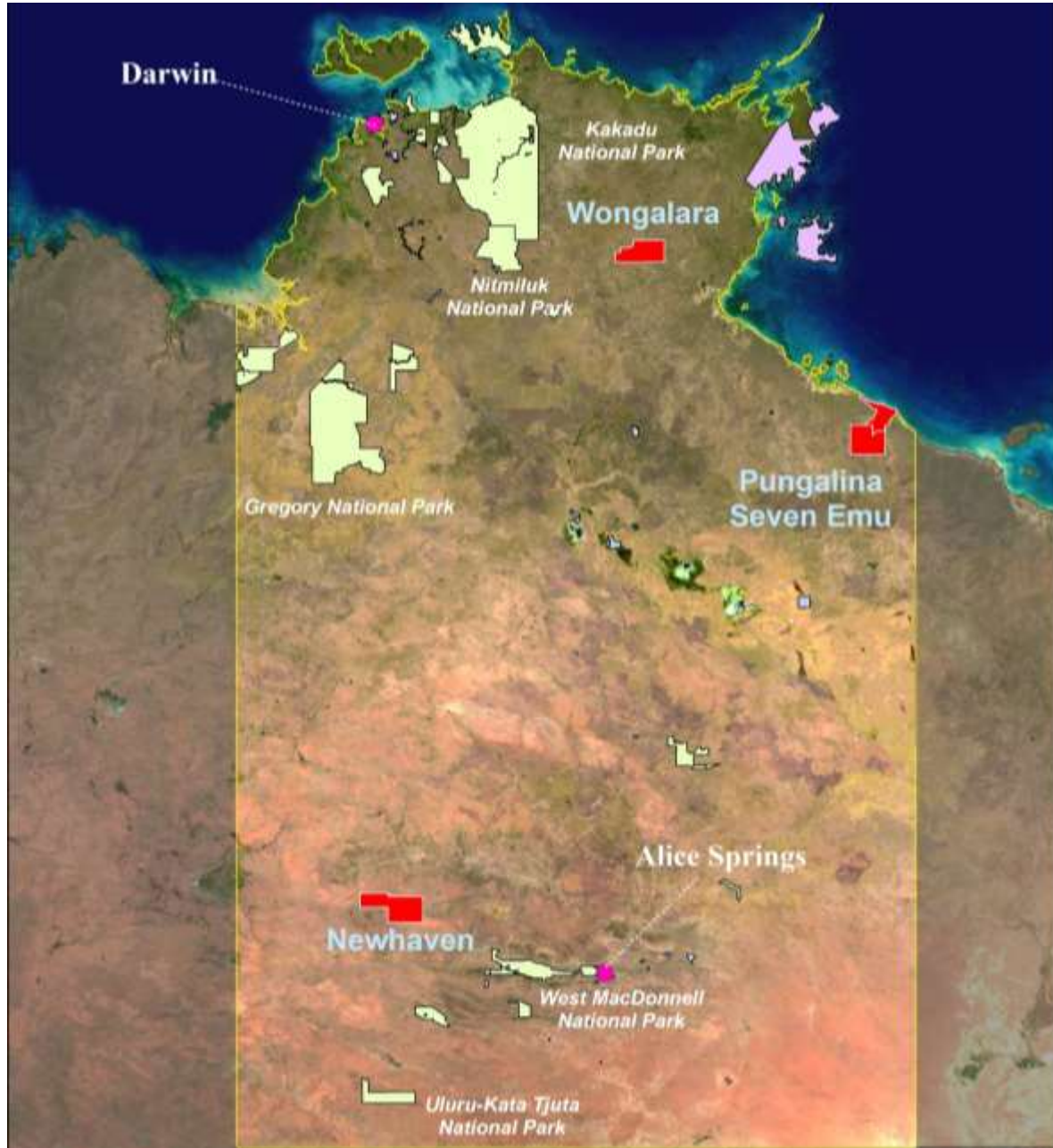
Australian Wildlife Conservancy: our model



- Establish wildlife sanctuaries
- Active management of threats
- **Management informed by science/ local knowledge**



AWC: manage three wildlife sanctuaries in NT



Wongalara



Pungalina - Seven Emu



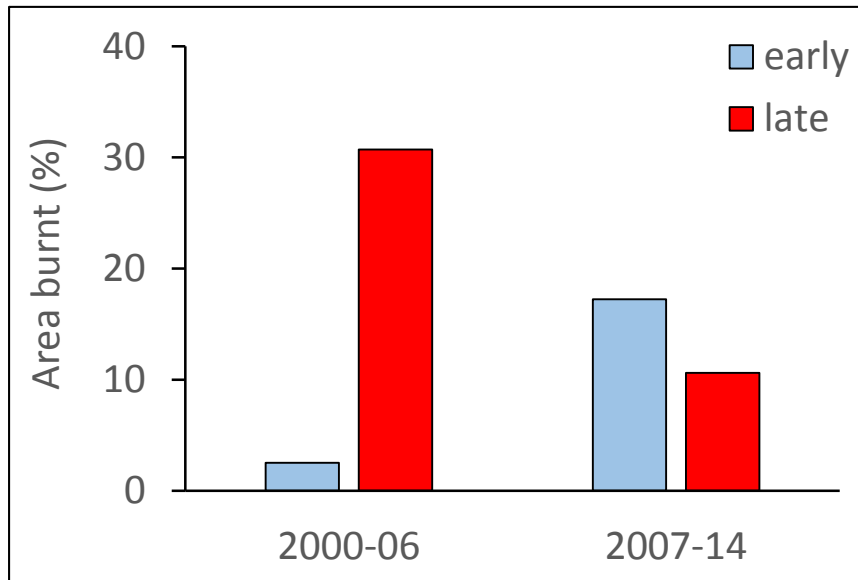
Newhaven



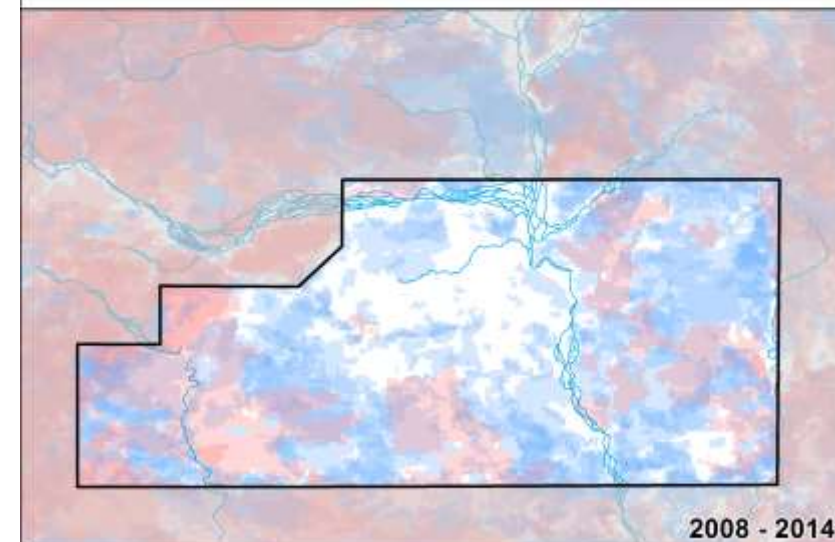
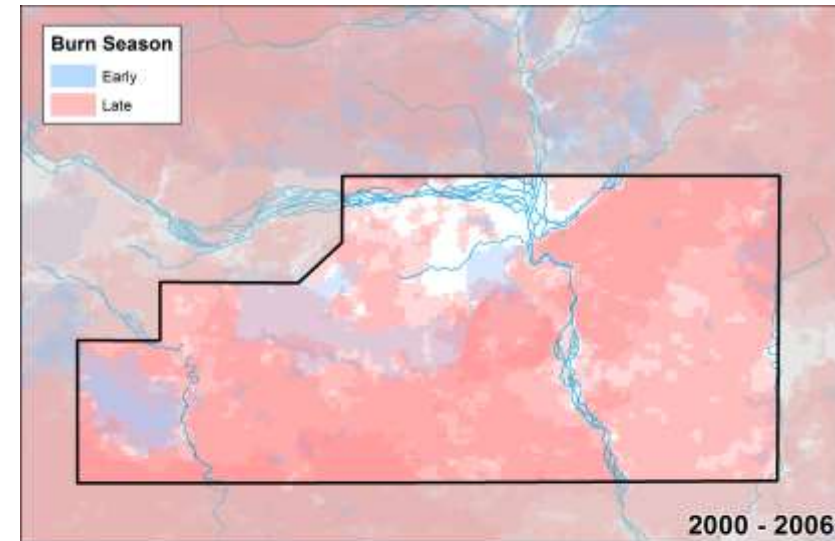
AWC: active management of threats

Wongalara

- fire management



↑
AWC management



AWC: active management of threats

Wongalara

- destocking



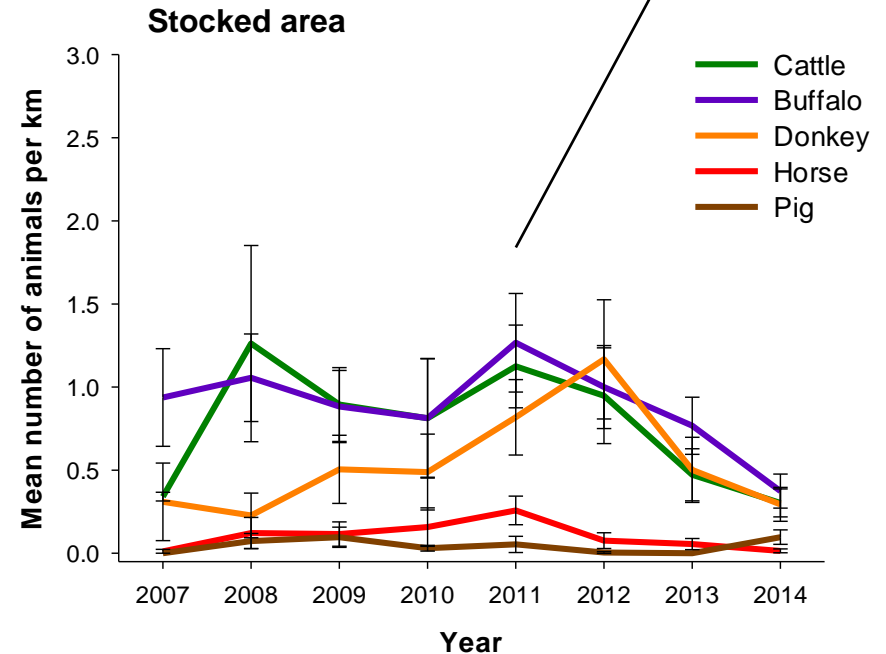
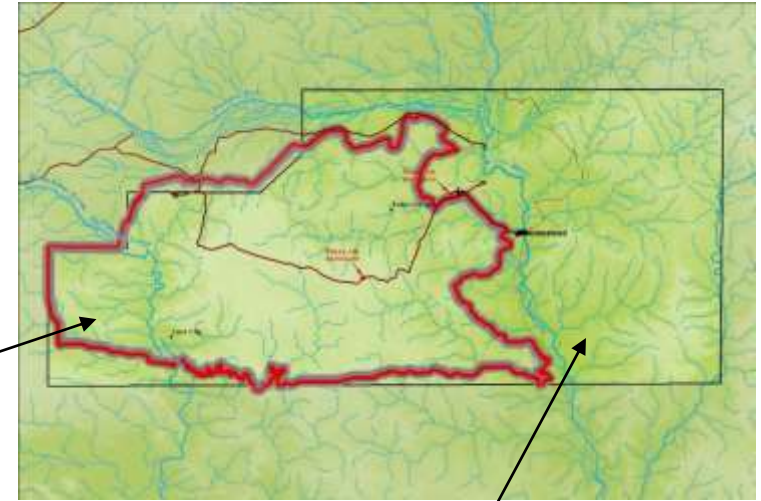
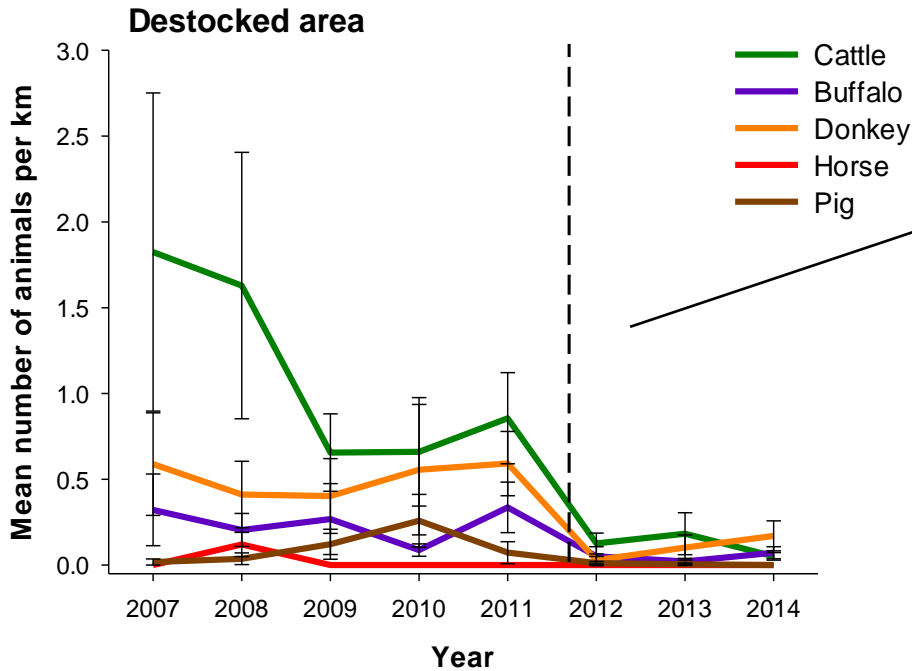
100,000 ha destocked area



AWC: active management of threats

Wongalara

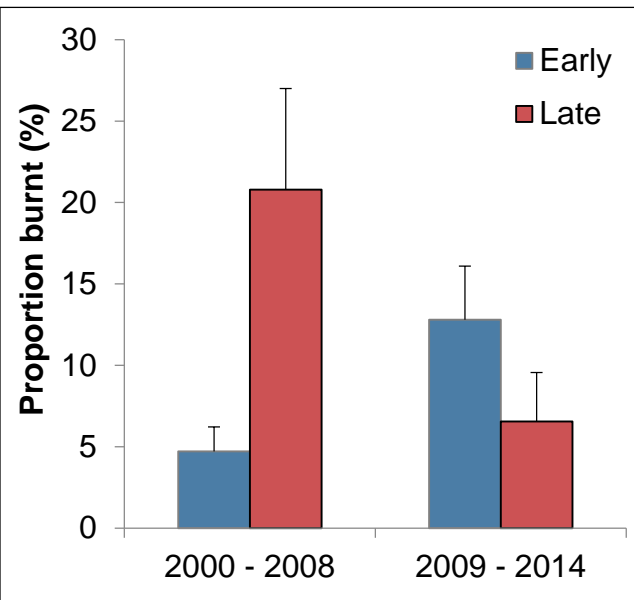
- destocking



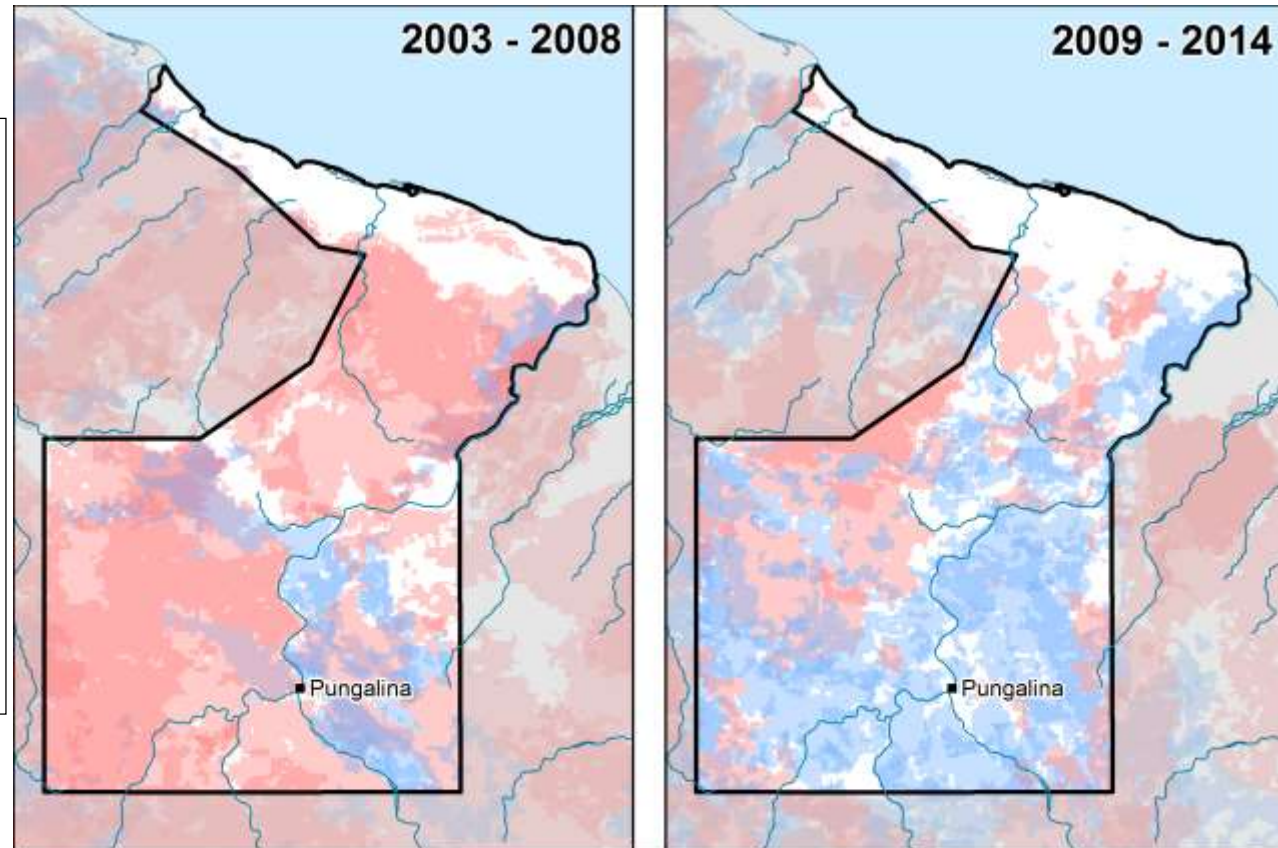
AWC: active management of threats

Pungalina – Seven Emu

- fire management



AWC
management



Pungalina - Seven Emu Seasonal Fire History

Fire scars are drawn with 60% transparency then overlaid on each other.

Fire scar data supplied by North Australian Fire Information
(www.firenorth.org.au).

Burn Season

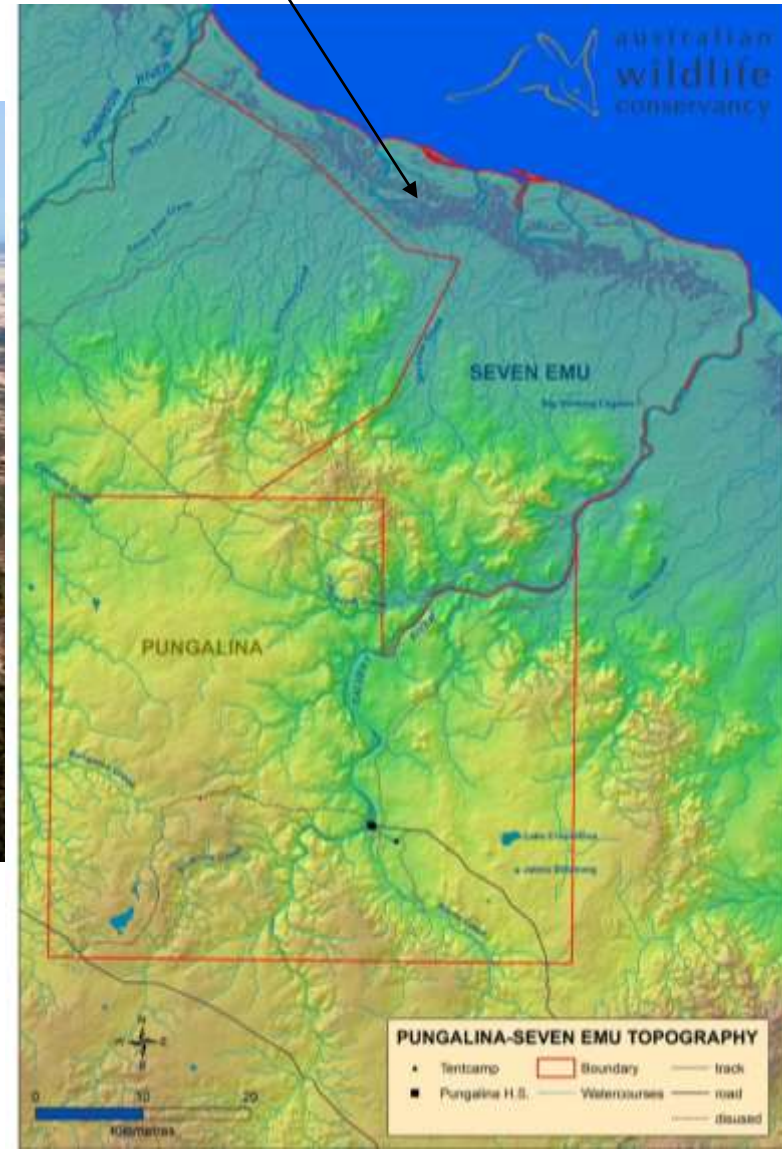
- Early
- Late

AWC: active management of threats

Pungalina – Seven Emu

- destocking

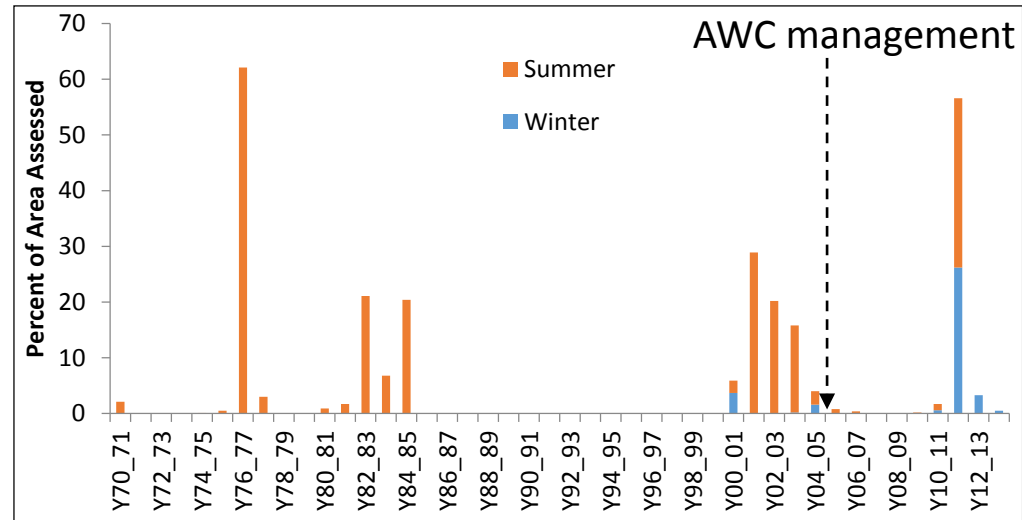
80,000 ha destocked area



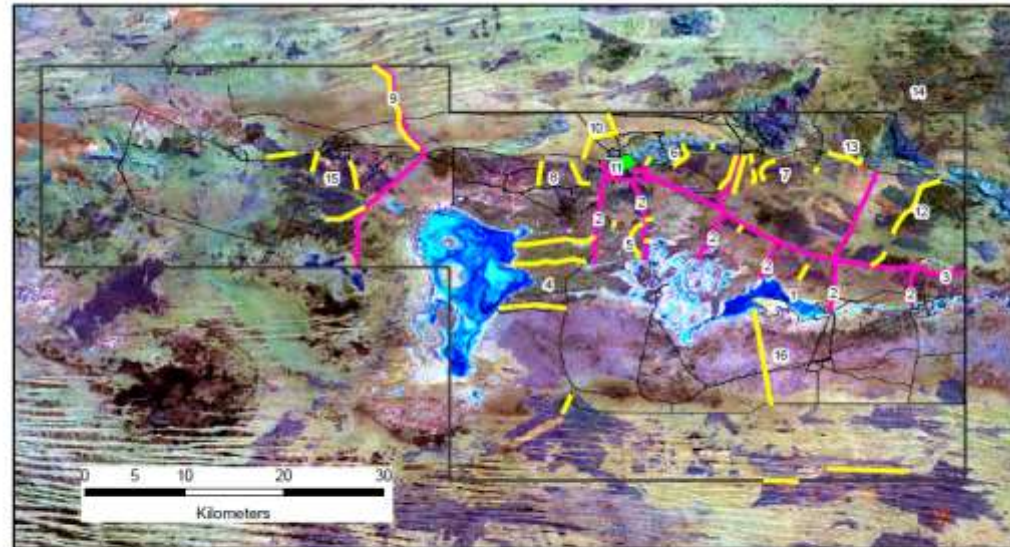
AWC: active management of threats

Newhaven

- fire management



2015 Newhaven Burn Plan on Landsat Image



Note: Reference numbers correlate to actions outlined in the 2015 Burn Plan. Actions listed against main objectives of fire management table.

- Homestead
- Newhaven Boundary
- Planned Ignition Lines
- Permanent Control Lines



AWC: active management of threats

Newhaven

- destocking



AWC: active management of threats

Newhaven

- feral animal control



A joint project between Desert Wildlife Services, AWC and the Nyirripi Rangers supported by Territory NRM

Australian Wildlife Conservancy: Newhaven reintroduction project

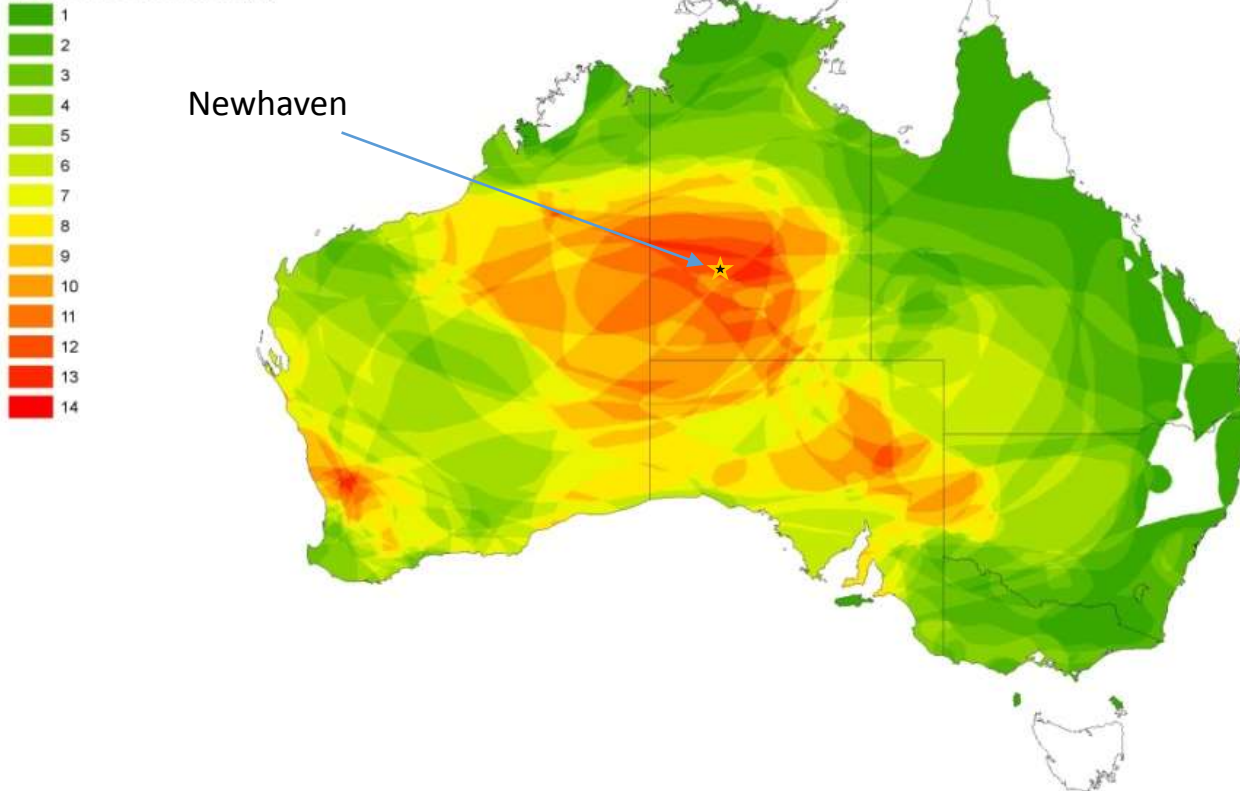


Australian Wildlife Conservancy:

Newhaven reintroduction project

- central Australia is an 'epicentre' of mammal extinctions/ declines
- cats and foxes are primary drivers of extinctions/ declines

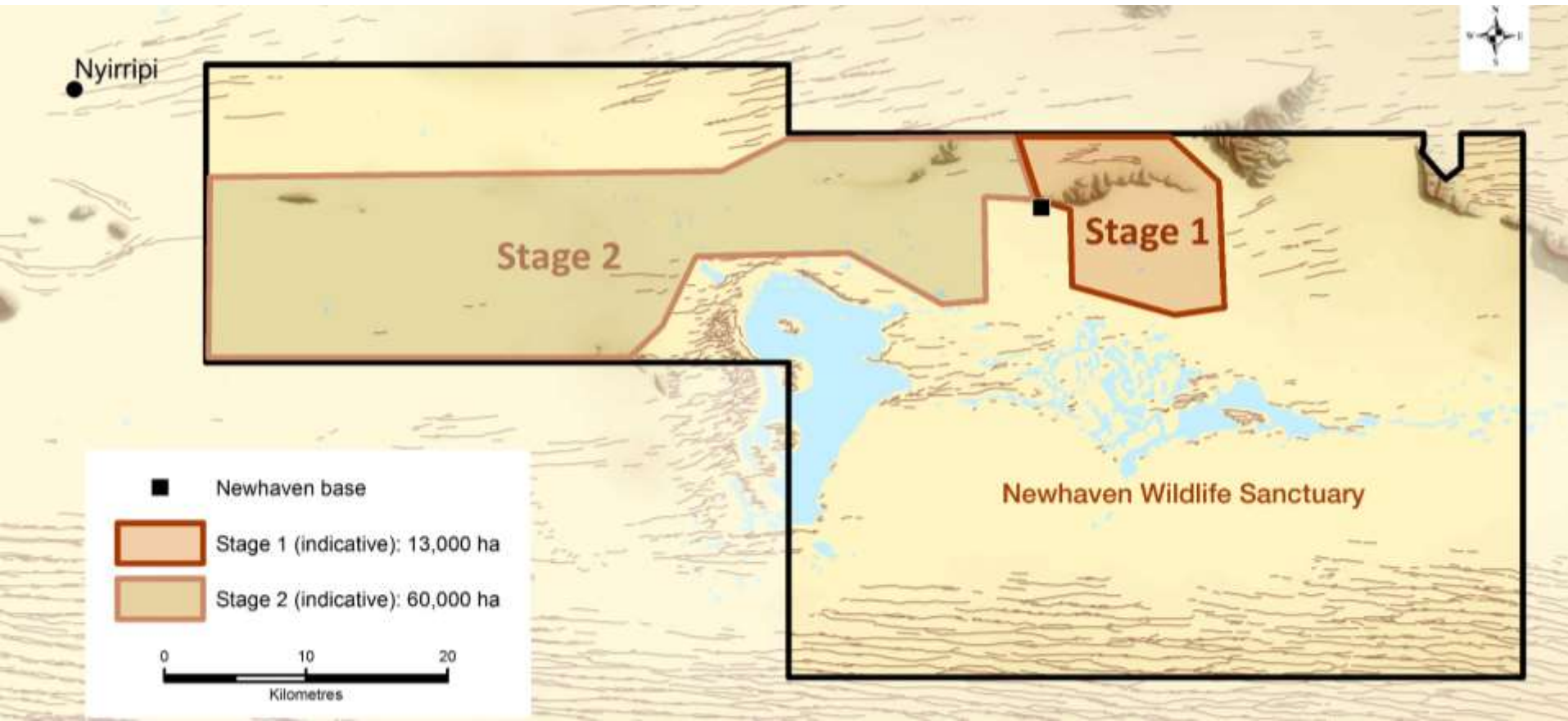
Richness of contractions (all)



Australian Wildlife Conservancy:

Newhaven reintroduction project

- Large feral predator-proof fence:
 - Stage 1: c.13,000 ha; Stage 2: c. 60,000 ha
- Eradicate foxes and cats
- Reintroduce 10+ species of locally extinct mammals



Australian Wildlife Conservancy:

Newhaven reintroduction project

- Projected to substantially increase population sizes/ conservation status of 10+ species of threatened mammals

Species	Current global population	Population estimate Stage 1	projected % increase
Mala	4,000	3,200	80%
Black-footed Rock-wallaby	<10,000	750	8%
Burrowing Bettong	15,000	4,000	27%
Brush-tailed Bettong	<18,000	1,600	11%
Golden Bandicoot	>10,000	6,500	26%
Greater Bilby	<10,000	800	8%
Central Rock-rat	<1000	1,250	139%
Western Quoll	<15,000	130	1%
Red-tailed Phascogale	<10,000	625	7%
Numbat	<1000	260	29%
Shark Bay Mouse	10,000	7,500	75%
Brushtail Possum (Ctr Australia)	500	740	68%



Australian Wildlife Conservancy:

Newhaven reintroduction project

- Projected to substantially increase population sizes/ conservation status of 10+ species of threatened mammals

Species	Current global population	Population estimate Stages 1&2	projected % increase
Mala	4,000	18,000	450%
Black-footed Rock-wallaby	<10,000	1,500	17%
Burrowing Bettong	15,000	22,500	150%
Brush-tailed Bettong	<18,000	9,000	60%
Golden Bandicoot	>10,000	32,500	130%
Greater Bilby	<10,000	4,500	45%
Central Rock-rat	<1000	1,825	203%
Western Quoll	<15,000	650	5%
Red-tailed Phascogale	<10,000	2,500	28%
Numbat	<1000	1,300	144%
Shark Bay Mouse	10,000	48,750	488%
Brushtail Possum (Ctr Australia)	500	1,600	320%

